



**San Pedro Creek Culture Park
Advisory Committee
September 14, 2023**





AGENDA
SEPTEMBER 14, 2023
SPCCP ADVISORY COMMITTEE MEETING
SAN ANTONIO RIVER AUTHORITY
9:00 A.M.

1. Welcome and Introductions – Kendall Hayes, SARA (5 minutes)
2. Subcommittee Business (5 minutes)
3. Citizens to be Heard (5 minutes)
4. Approval of the Minutes (2 minutes)
 - a. August 2023
5. Operations & Maintenance Activities – Tommy Mitchell, SARA (10 minutes)
 - a. Project Update
6. Design and Construction Activities – Pablo Garza, SARA (25 minutes)
 - a. Phases 2, 3 & 4.1 Construction Update
 - b. Phase 4.2 Update
7. Public Art – Elizabeth Ibarra, SARA (10 minutes)
 - a. Projects Update
8. Events – Nicole Marshall, SARA (10 minutes)
 - a. Upcoming Events
9. Calendar Items
 - a. Mondays at 6:00 PM – Yoga on the Creek
 - b. November 10th – Volunteer Appreciation Mixer
10. Adjourn



Subcommittee Business



Citizens to be Heard



Approval of the Minutes



Operations & Maintenance Update

Tommy Mitchell

Watershed & Park Operations Manager



Rain from the Heavens Update



- Realignment of the trough and associated piping
- Shop fabrication anticipated to be completed and shipped mid-October
- Site work to start Nov. 1st with an anticipated completion date of Nov. 17th



Salinas Boardwalk Update



- Original design called for Cypress wood
- Overall materials have not held up well to public interaction and water damage
- Will be replacing with composite boards, same as those utilized at the St. James AMEC Culture Crossing



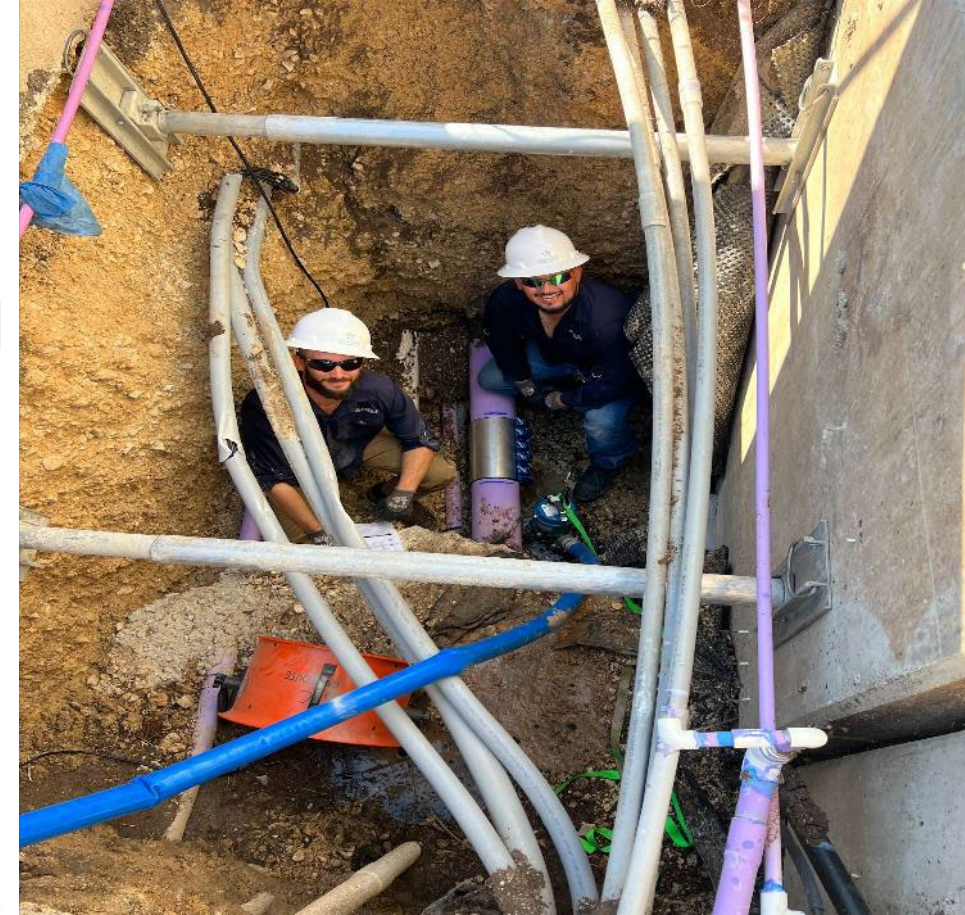
Camaron Street Modifications



Irrigation Leak Repairs



- Main irrigation line repair requires confined space entry given depth to line
- Repairs have been made



Houston Street Restrooms



- Door automation is active
- Hours of operation 7am to 9pm
- Coordination with Park Police
- Security cameras forthcoming soon



Houston Street Water Wall @ STREAM



- Trough cleaning on quarterly basis
- Annual cleaning of the stainless panels scheduled



STREAM Microphone



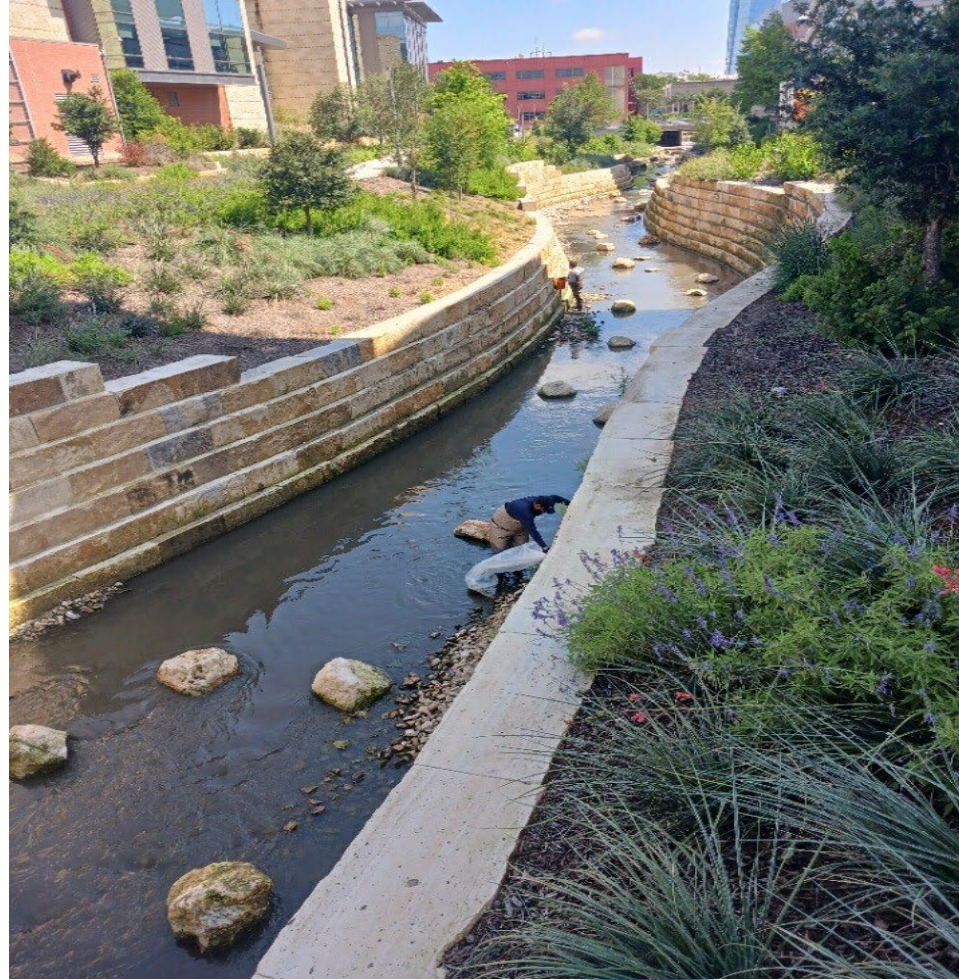
- Continued vandalism to the STREAM microphone
- Staff enhanced design through gauge thickness
- Aug 2nd the microphone was stolen and riser damaged
- Collaboration and redesign ongoing, anticipated installation mid-October



Other Activities



Other Activities



Park Programs



Monday Night Yoga- held weekly at St. James AMEC
Culture Crossing



Drum Circle- held quarterly at Rain from the Heavens Plaza



Questions



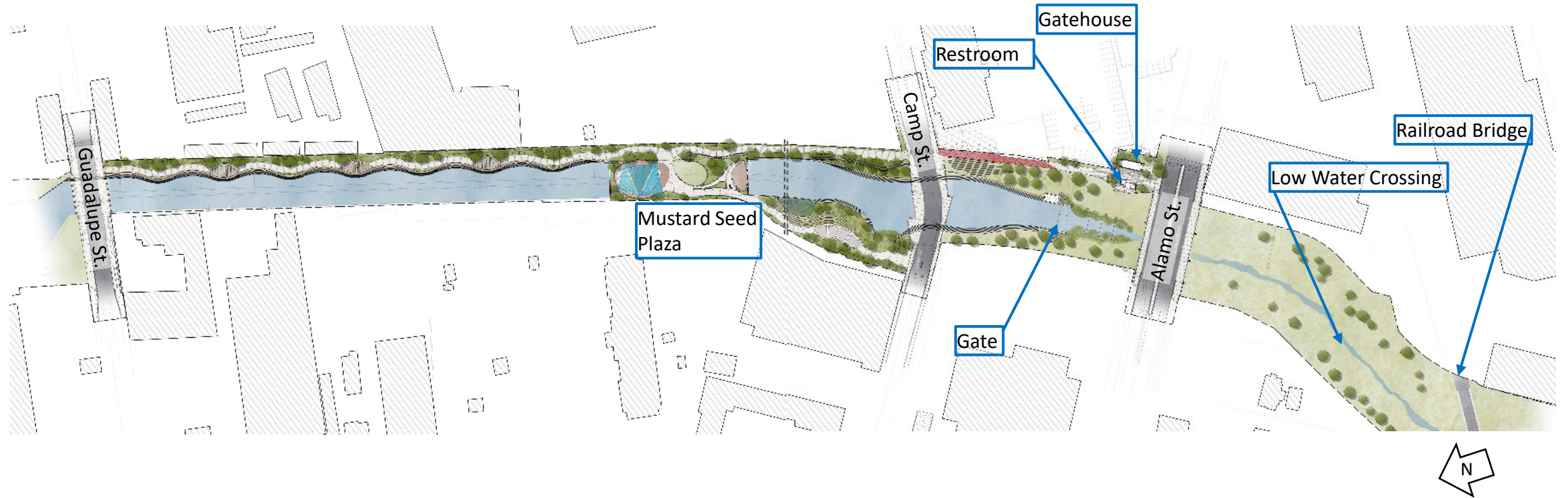
Construction Updates

Project Engineer - Pablo Garza, PE



San Pedro Creek Project: Phase 2

Guadalupe Street to S. Alamo Street



San Pedro Creek Project: Phase 2

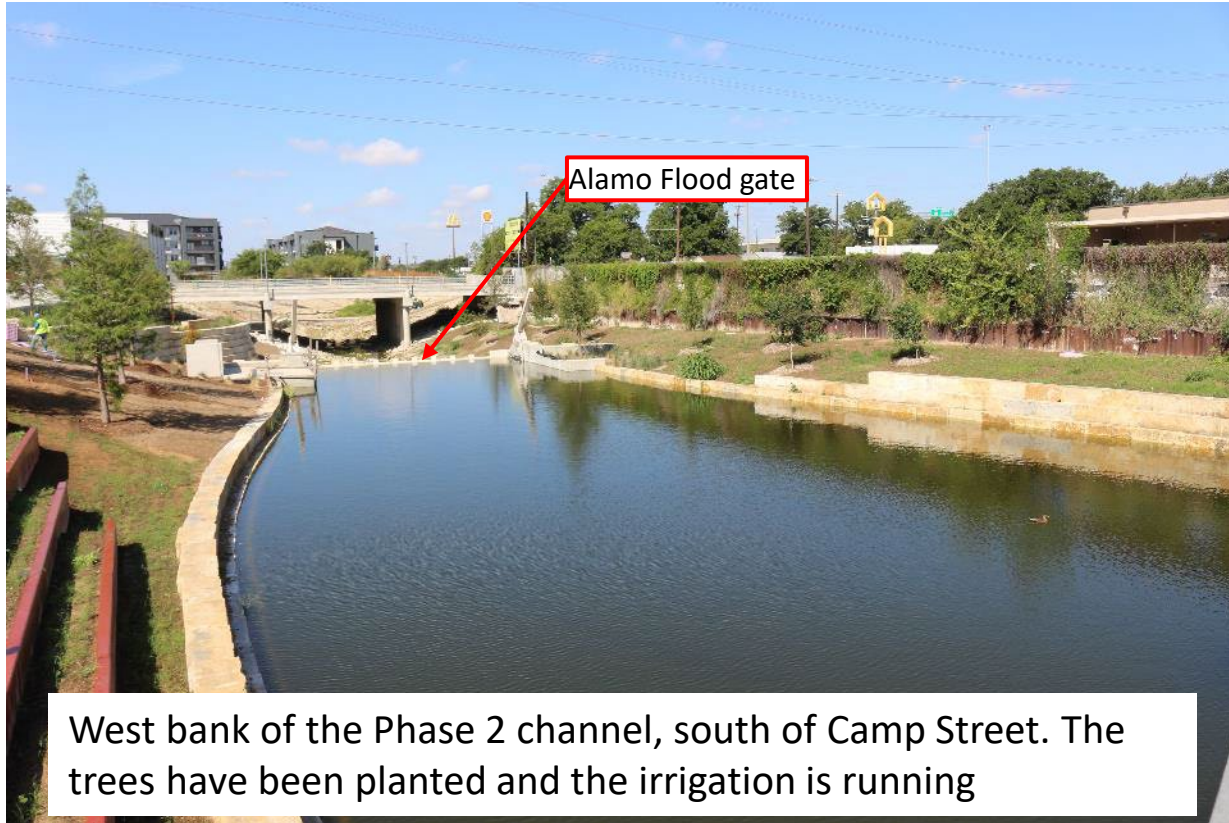
Guadalupe Street to S. Alamo Street

- Alamo gate restroom door locks and electrical components are nearing complete
- The plants and other vegetation, with the exception of the aquatic plants, have been placed
- The irrigation system is operating
- The shade structure and artificial turf are installed at the park north of Camp Street
- The plants and vegetation at Mustard Seed Plaza are planted
- Word art has been etched into the MSE walls at Mustard Seed Plaza



San Pedro Creek Project: Phase 2

Guadalupe Street to S. Alamo Street



San Pedro Creek Project: Phase 2

Guadalupe Street to S. Alamo Street



The west bank of the Phase 2 Channel, north of Camp Street. Most of the trees have been planted



Etching Word Art at Mustard Seed Plaza, as seen from the southwest corner of the plaza



San Pedro Creek Project: Phase 2

Guadalupe Street to S. Alamo Street



The shade structure has been installed



Handrail, north of the culvert, is being installed



San Pedro Creek Project: Phase 3

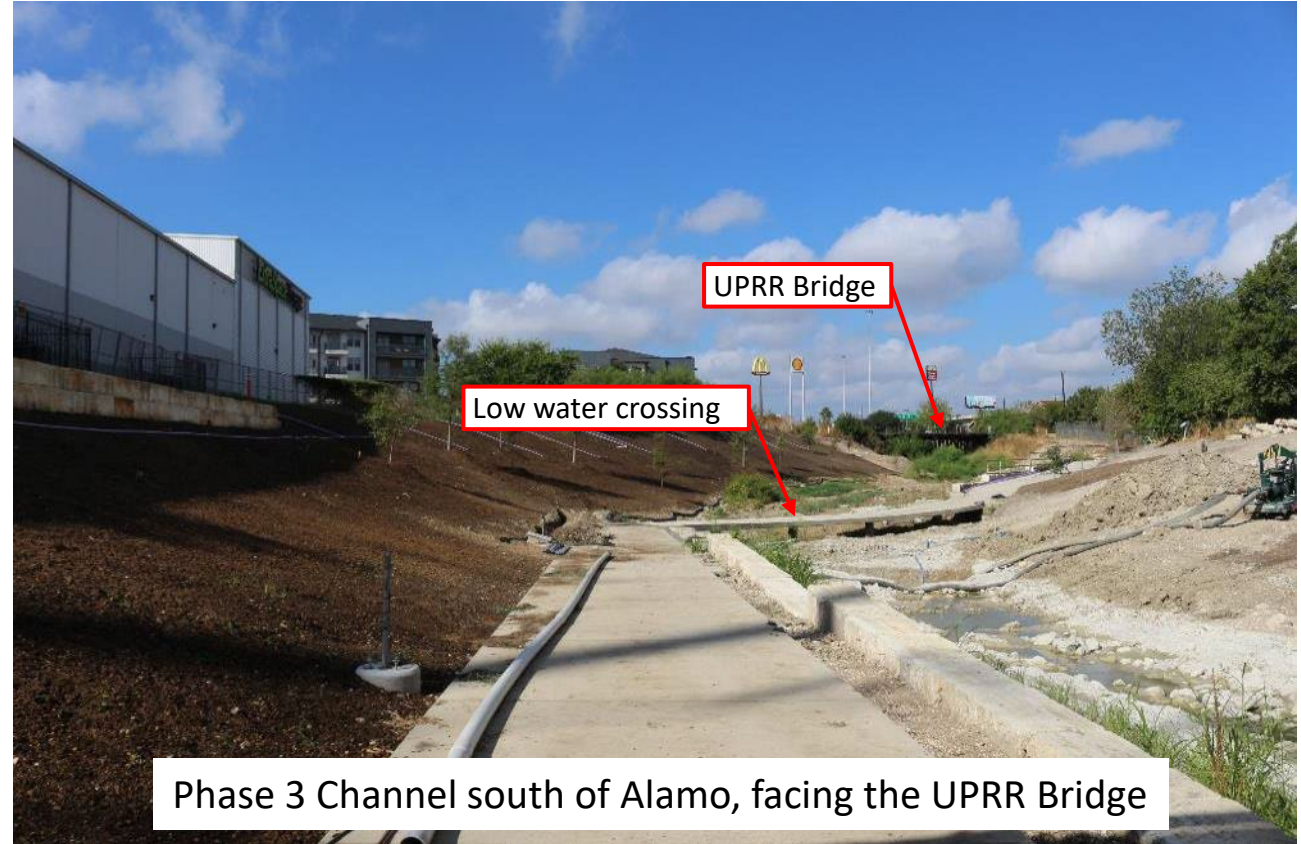
Alamo Street to Confluence w/ Apache Creek



San Pedro Creek Project: Phase 3

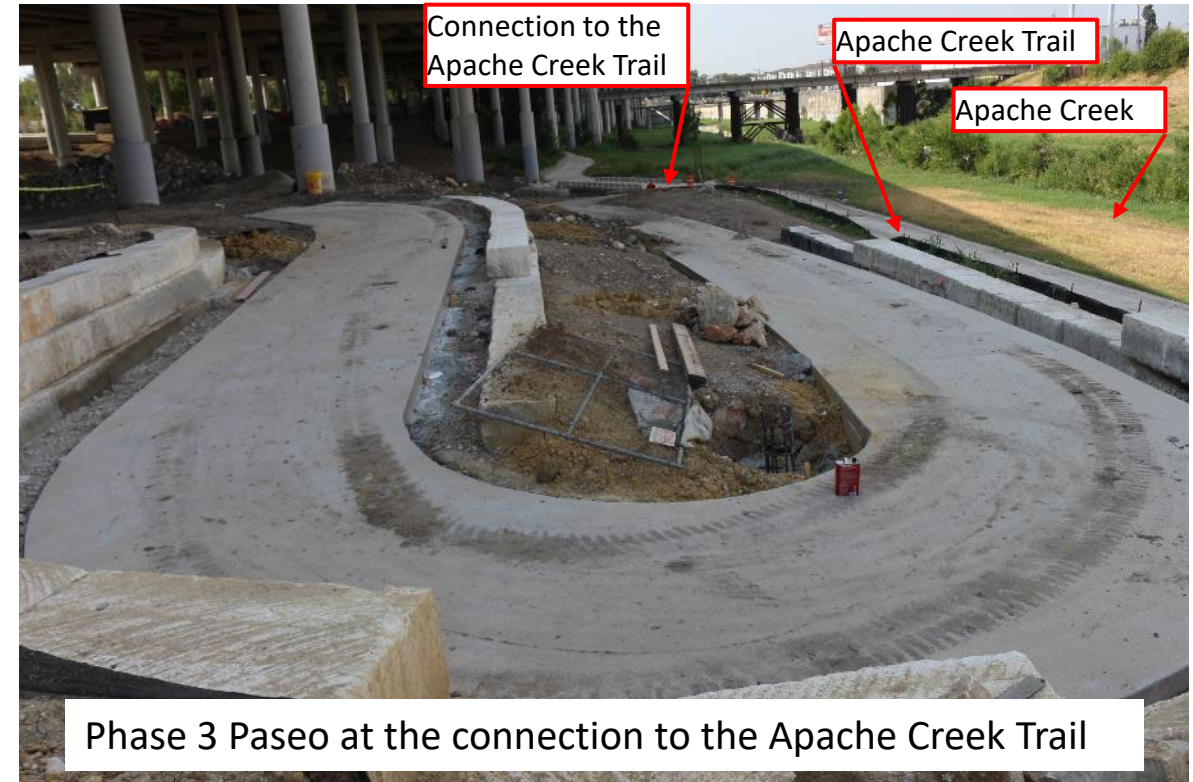
Alamo Street to Confluence w/ Apache Creek

- Paseos and walls are nearing completion. There's only a small section of paseo under I-35 that has not been placed, to allow the contractor equipment access
- The riffle pools and stones are completed and are functioning as intended
- The storm drain penetrations in the slopes of the creek channel are completed
- The contractor has made the connection to the Apache creek trail
- The contractor is cleaning the slopes in preparation to plant trees and vegetation



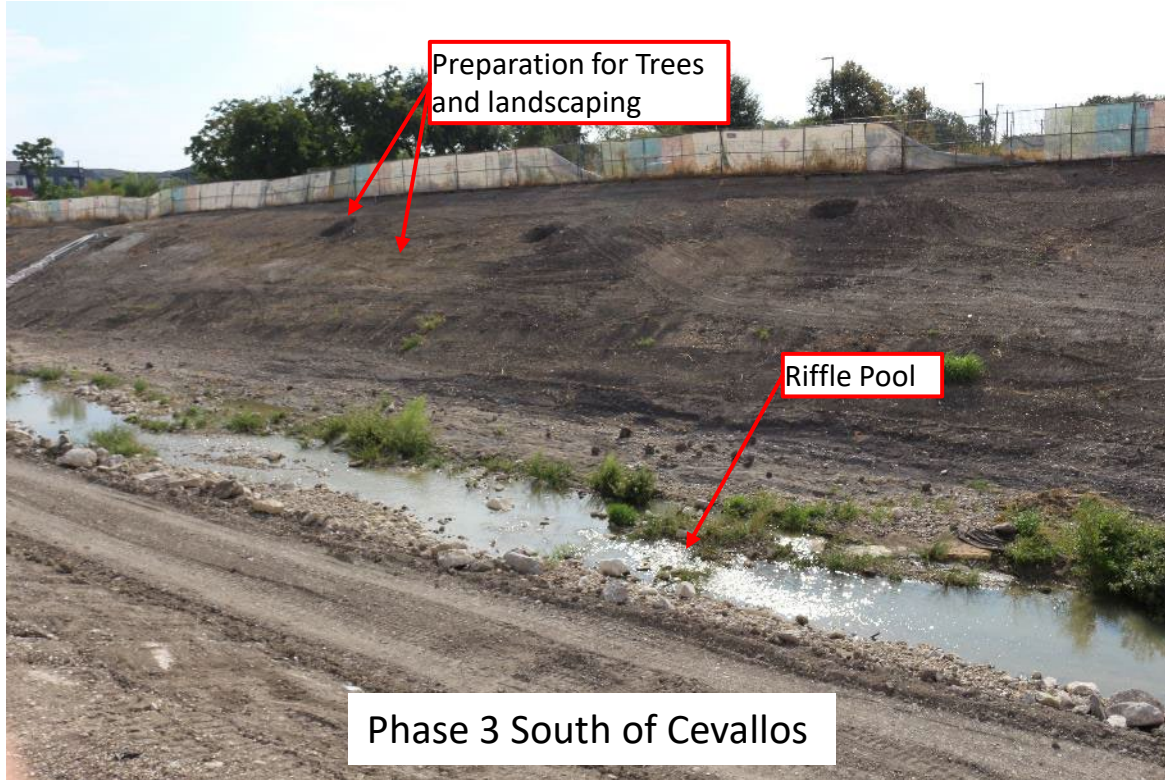
San Pedro Creek Project: Phase 3

Alamo Street to Confluence w/ Apache Creek



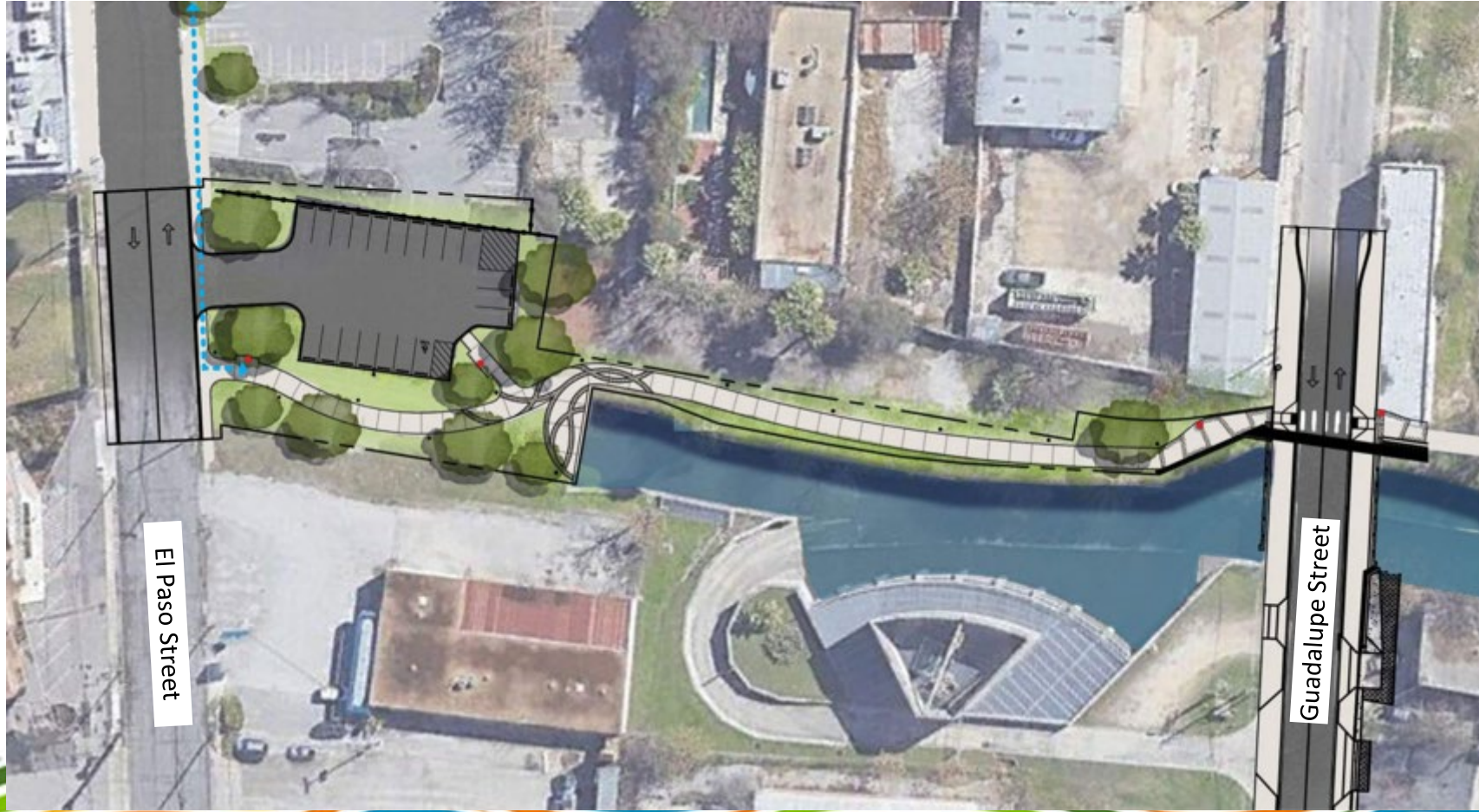
San Pedro Creek Project: Phase 3

Alamo Street to Confluence w/ Apache Creek



San Pedro Creek Project: Phase 4.1

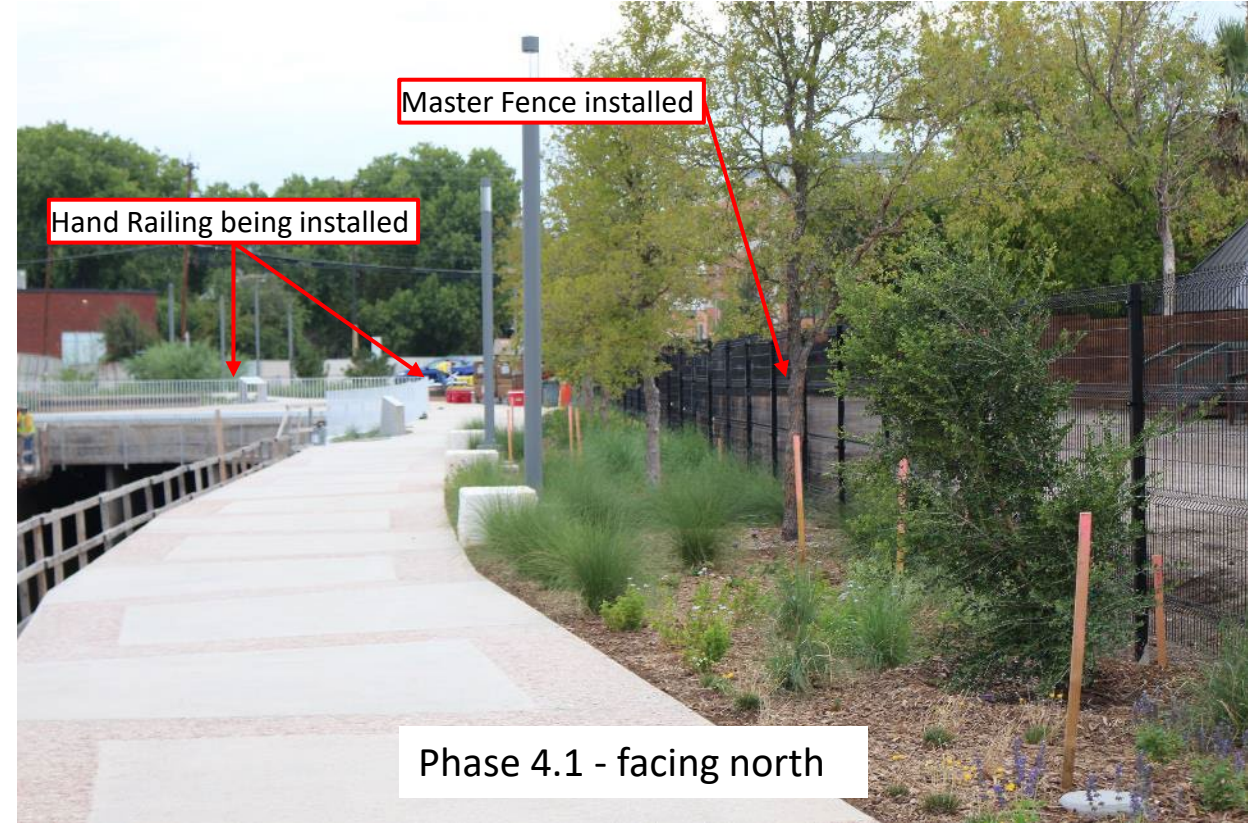
Guadalupe Street to El Paso Street



San Pedro Creek Project: Phase 4.1

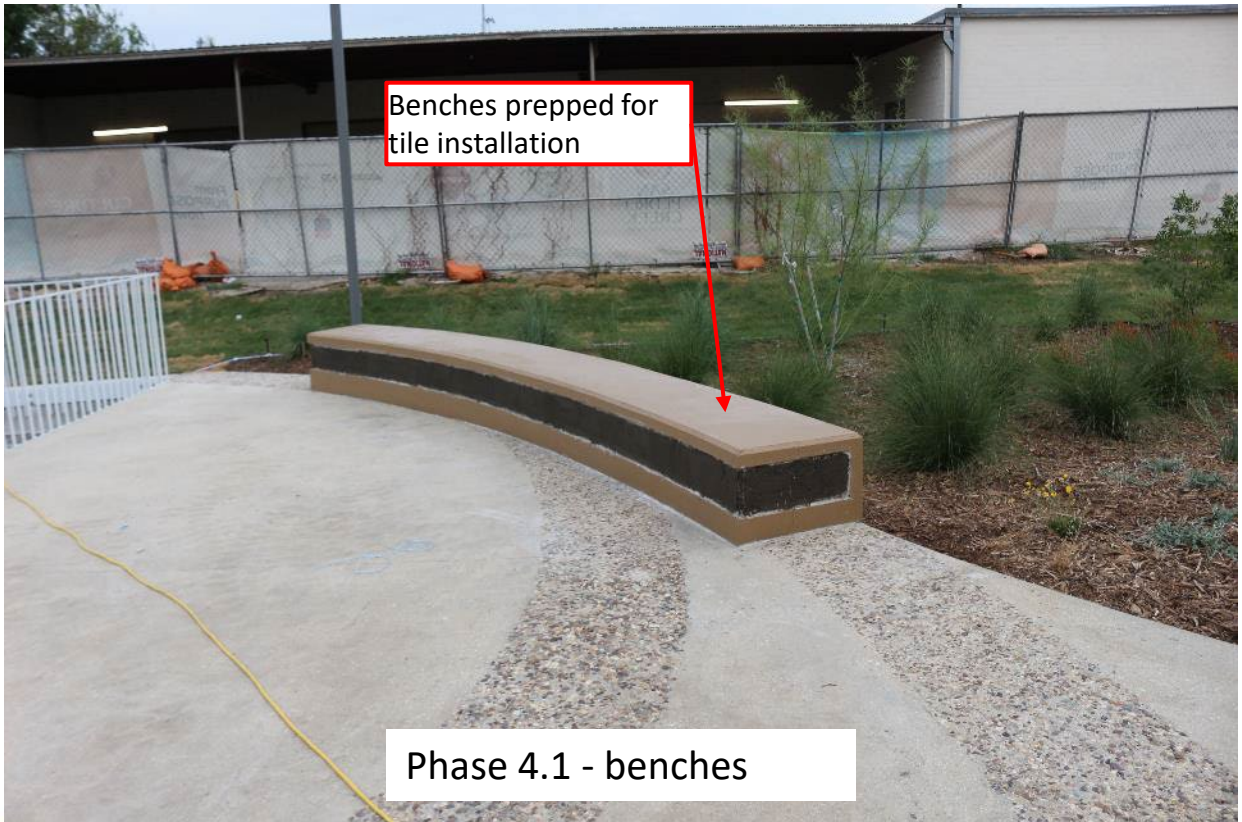
Guadalupe Street to El Paso Street

- Construction in 4.1 is nearing completion and the paseo has been poured
- Modifications of the parking lot are complete
- Planting is nearing completion
- Lights and electrical components are installed
- Master fence along east side of the paseo is installed. Art panels along the east side of the paseo are scheduled to be delivered next week
- The handrailing along the creek is being installed
- Benches are prepped for the installation of the artist tiles



San Pedro Creek Project: Phase 4.1

Guadalupe Street to El Paso Street



Benches prepped for
tile installation

Phase 4.1 - benches



Some of the El Paso Street Trail Head and planting, as seen facing
El Paso



San Pedro Creek Project: Phase 4.2

El Paso Street to Cesar Chavez



Questions



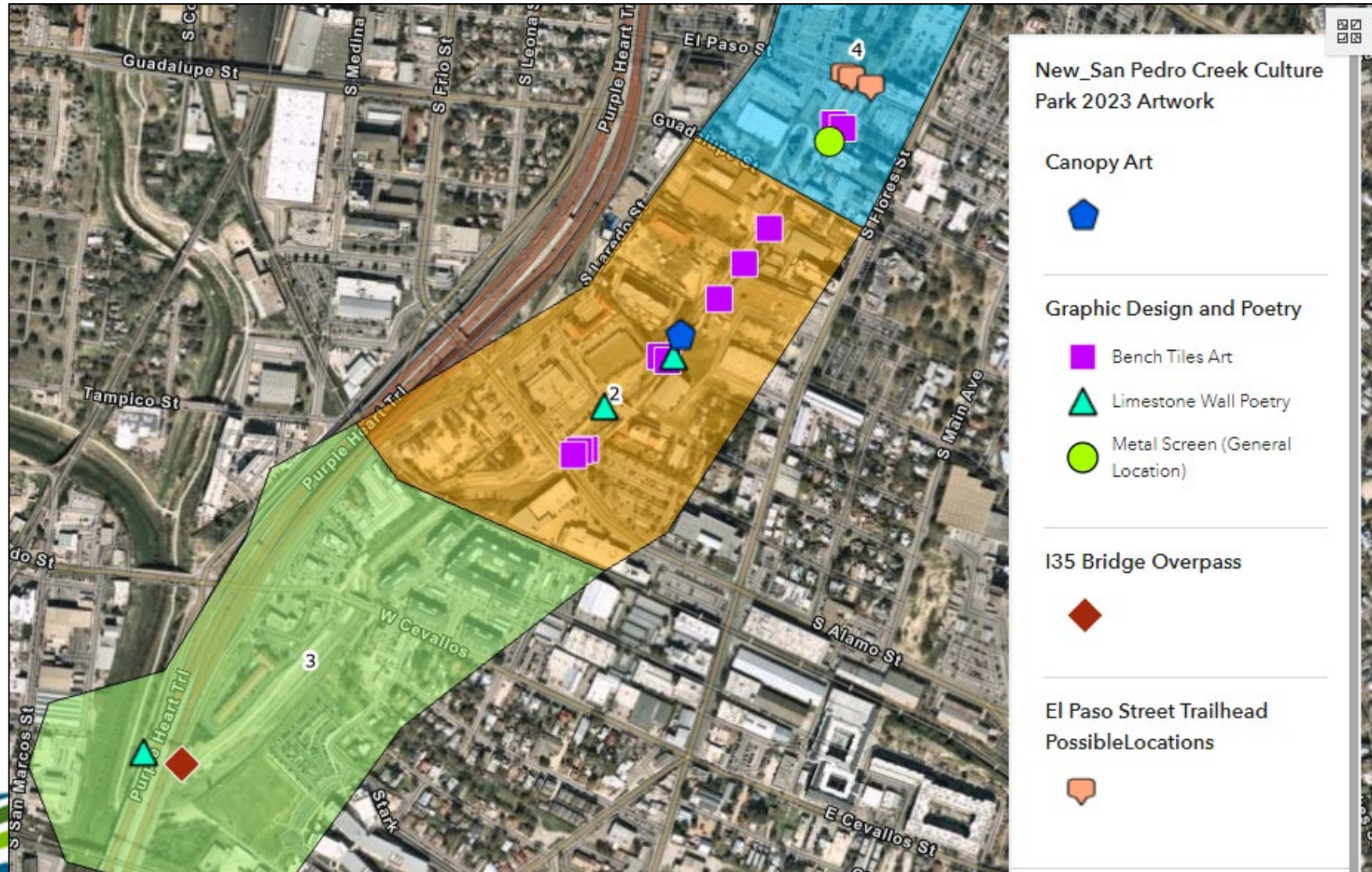
Public Art Update

Elizabeth Ibarra

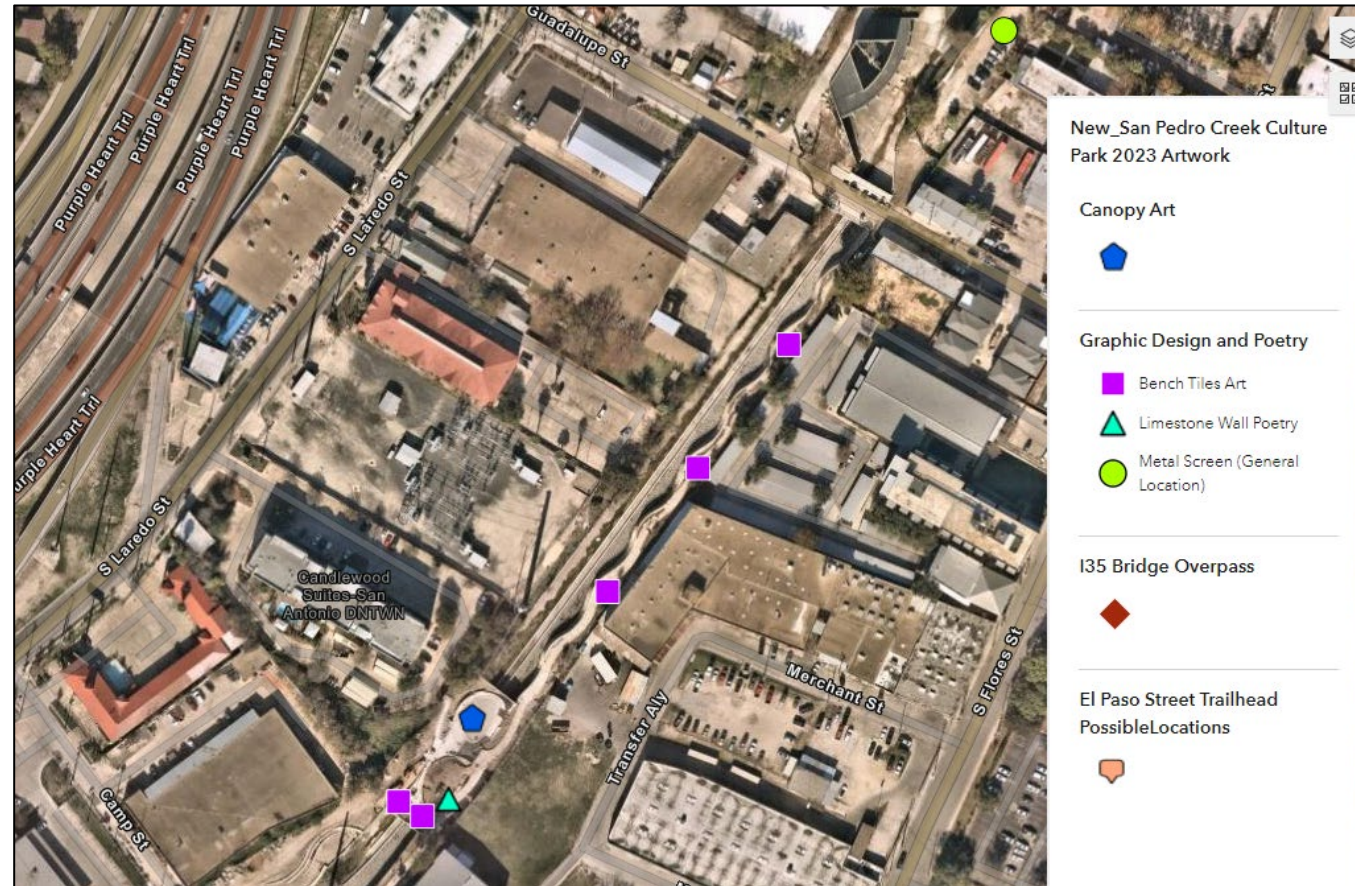
SARA, SPCCP Art Project Manager



Overview



Canopy, Phase 2 – Rikkianne Van Kirk



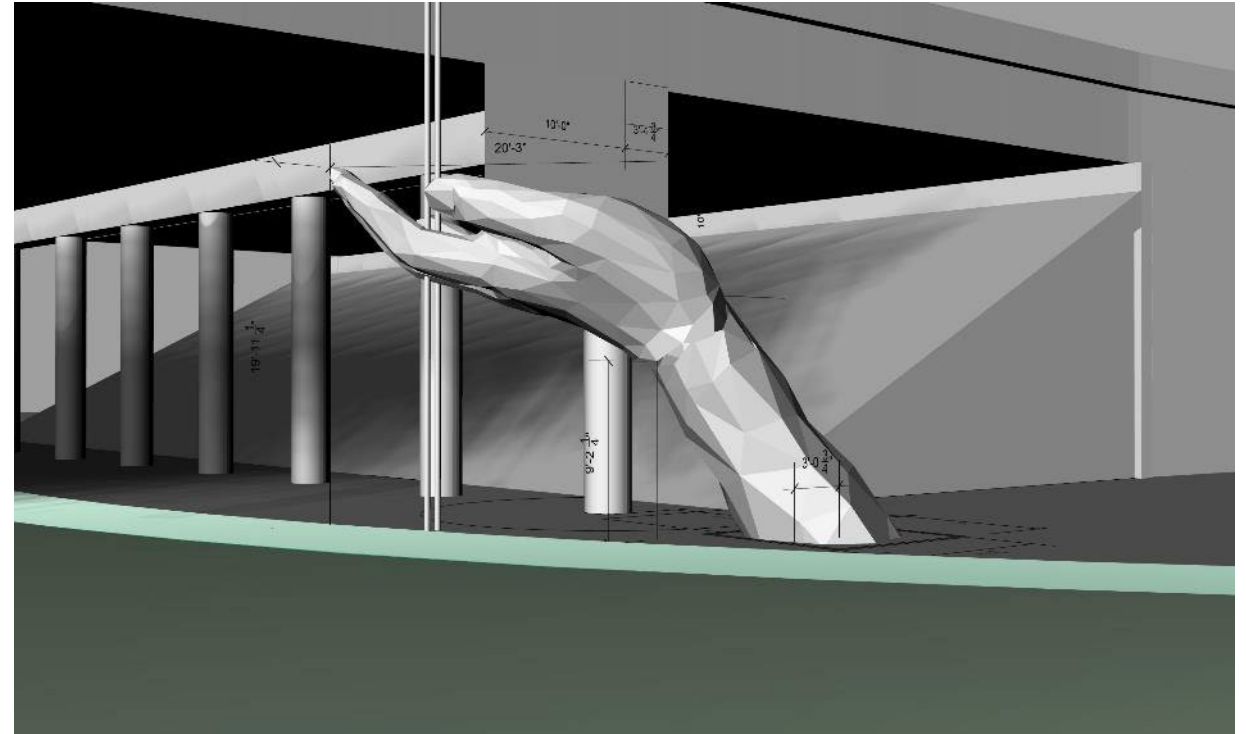
Canopy, Phase 2 – Rikkianne Van Kirk



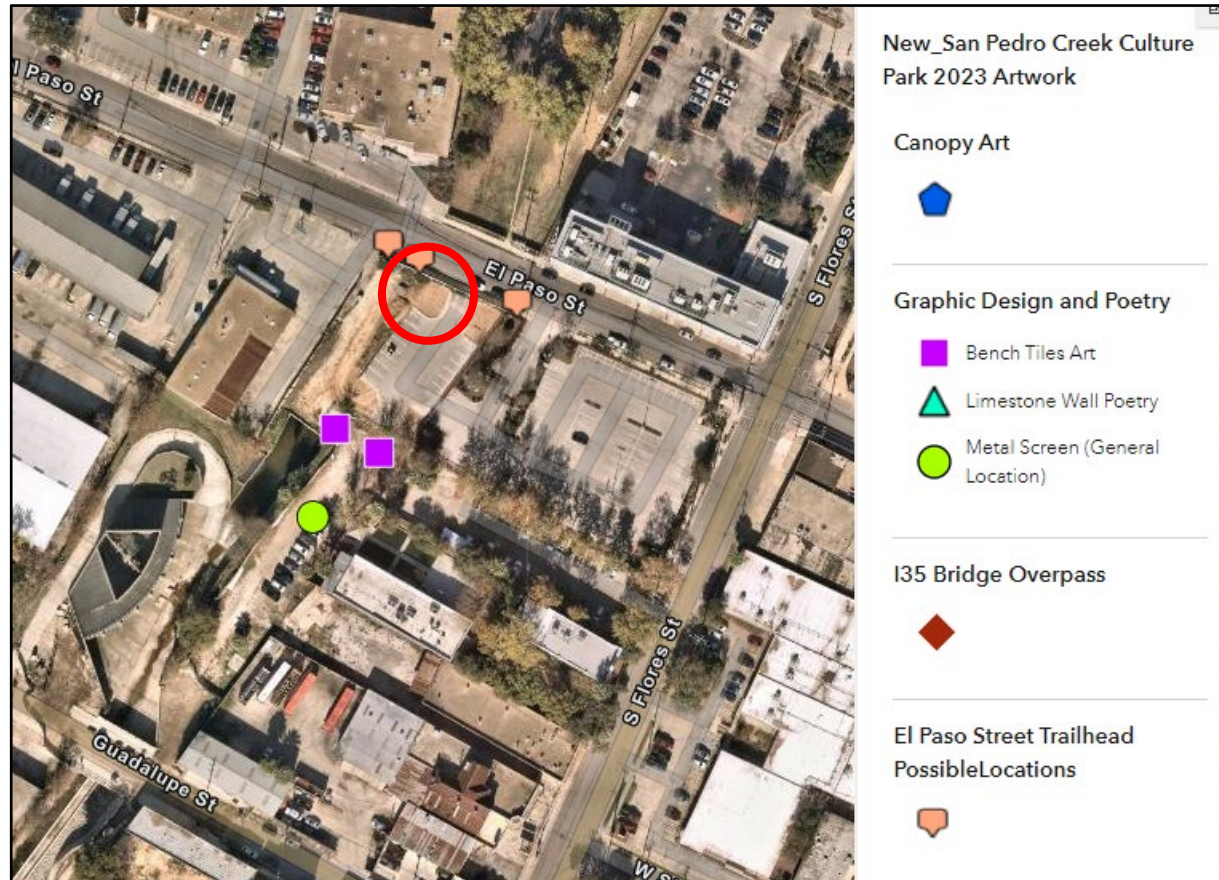
I-35 Bridge Overpass, Phase 3 – Mark Reigelman



Note: Design details are subject to change.



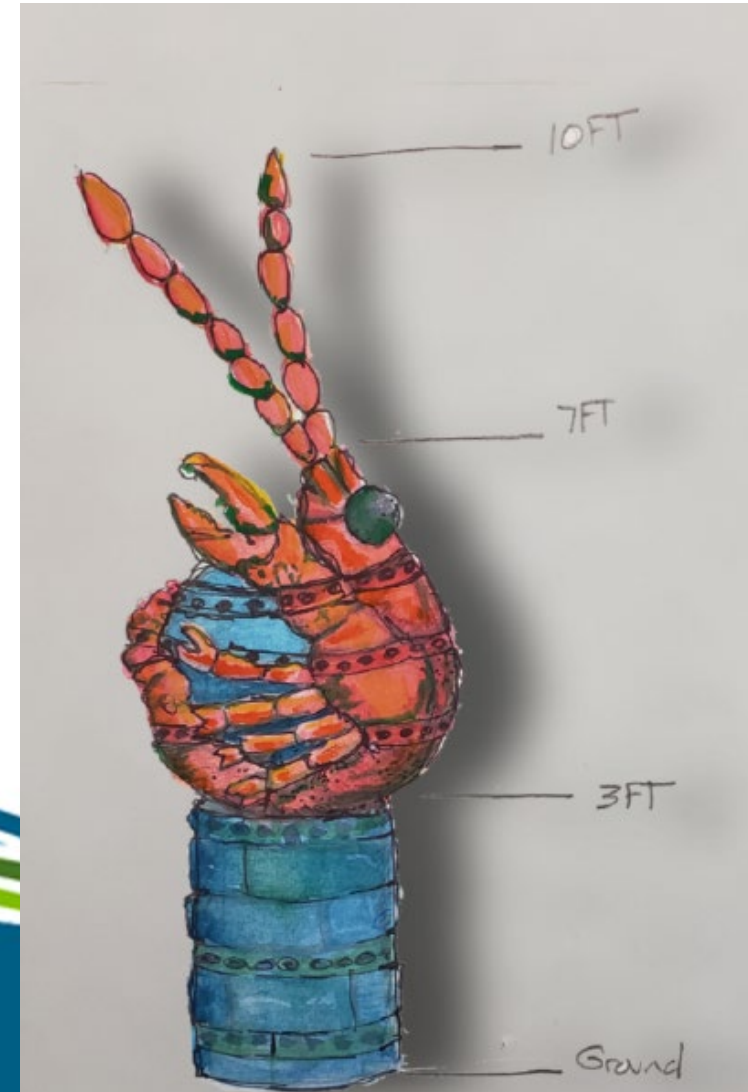
EL Paso Street Trailhead, Phase 4.1 – Diana Kersey



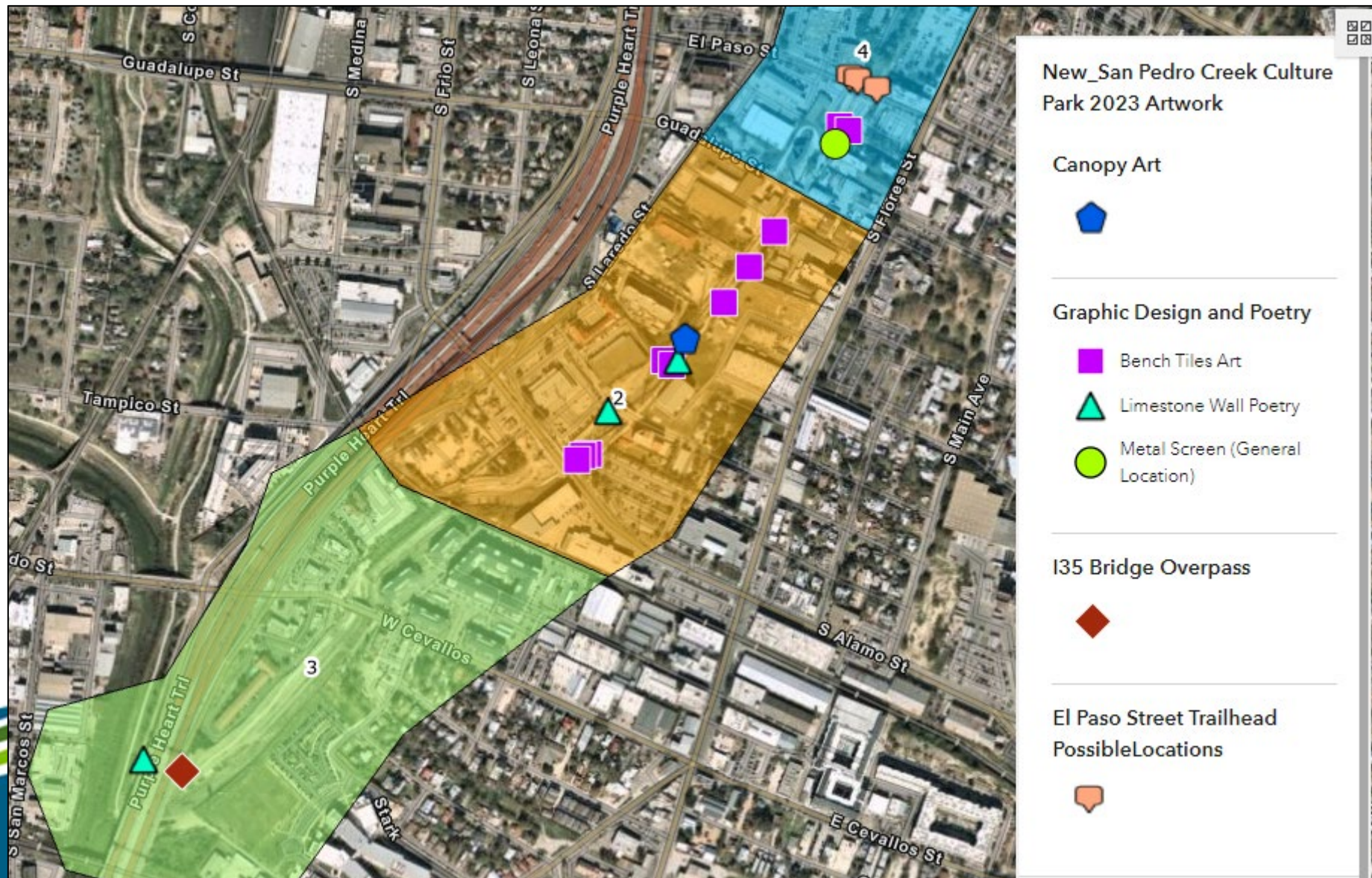
EL Paso Street Trailhead, Phase 4.1 – Diana Kersey



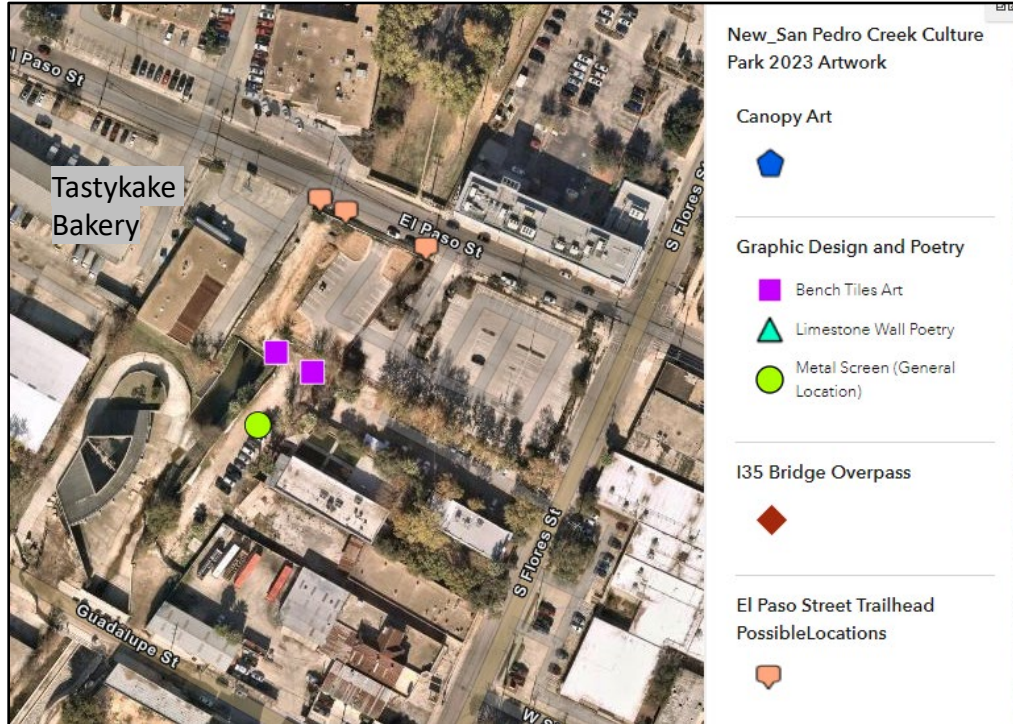
Final Design – Crawfish Sculpture



Graphic Design & Poetry (Tiles, Poetry, Metal Screens)



Metal Screens, Phase 4 – Elizabeth Carrington



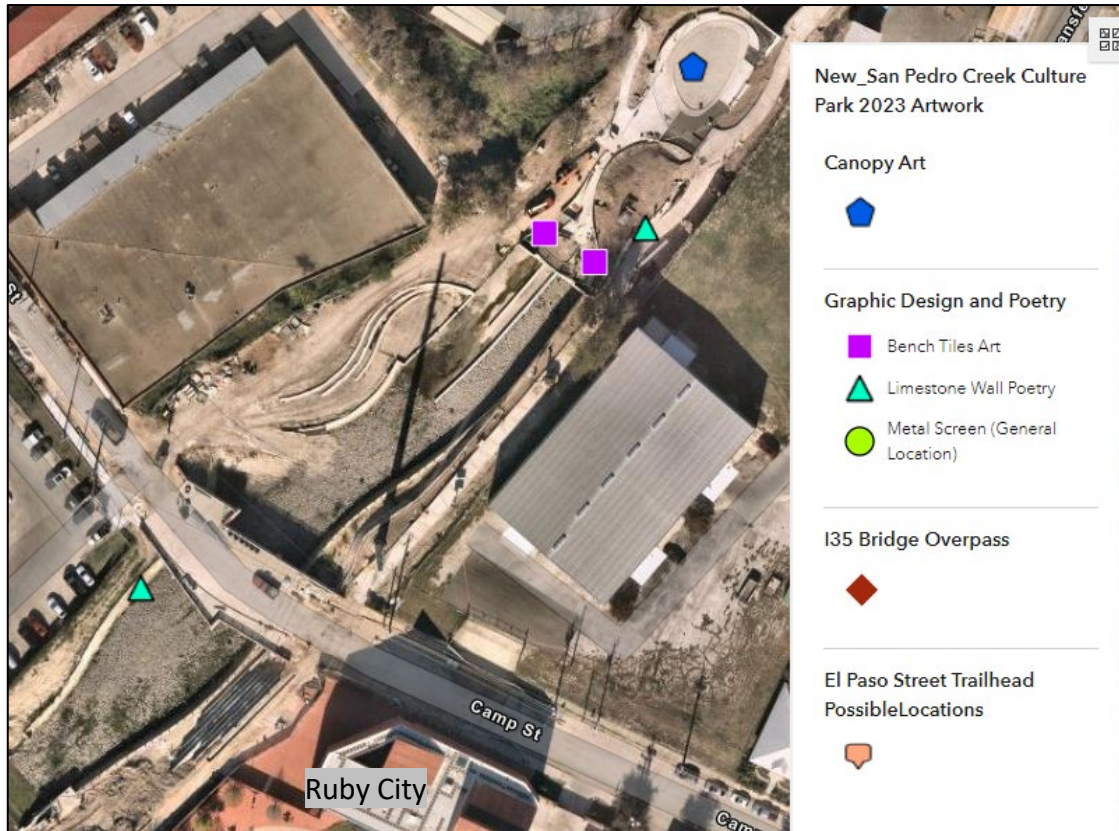
Graphic Design & Poetry – Elizabeth Carrington



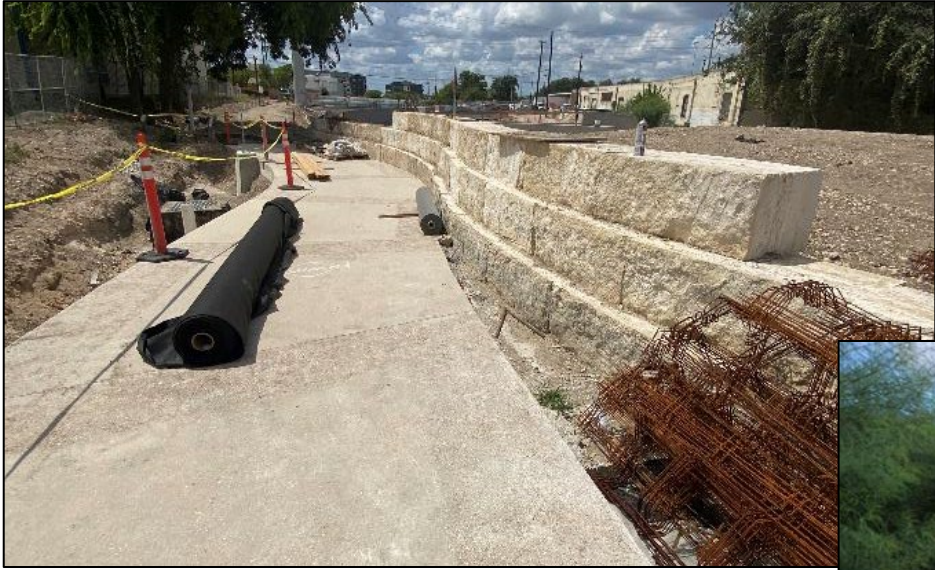
Graphic Design & Poetry – Elizabeth Carrington



Poetry, Phase 2 & 3 – Eduardo Vega



Poetry, Phase 2 & 3 – Eduardo Vega



Mustard Seed Plaza –
then and now

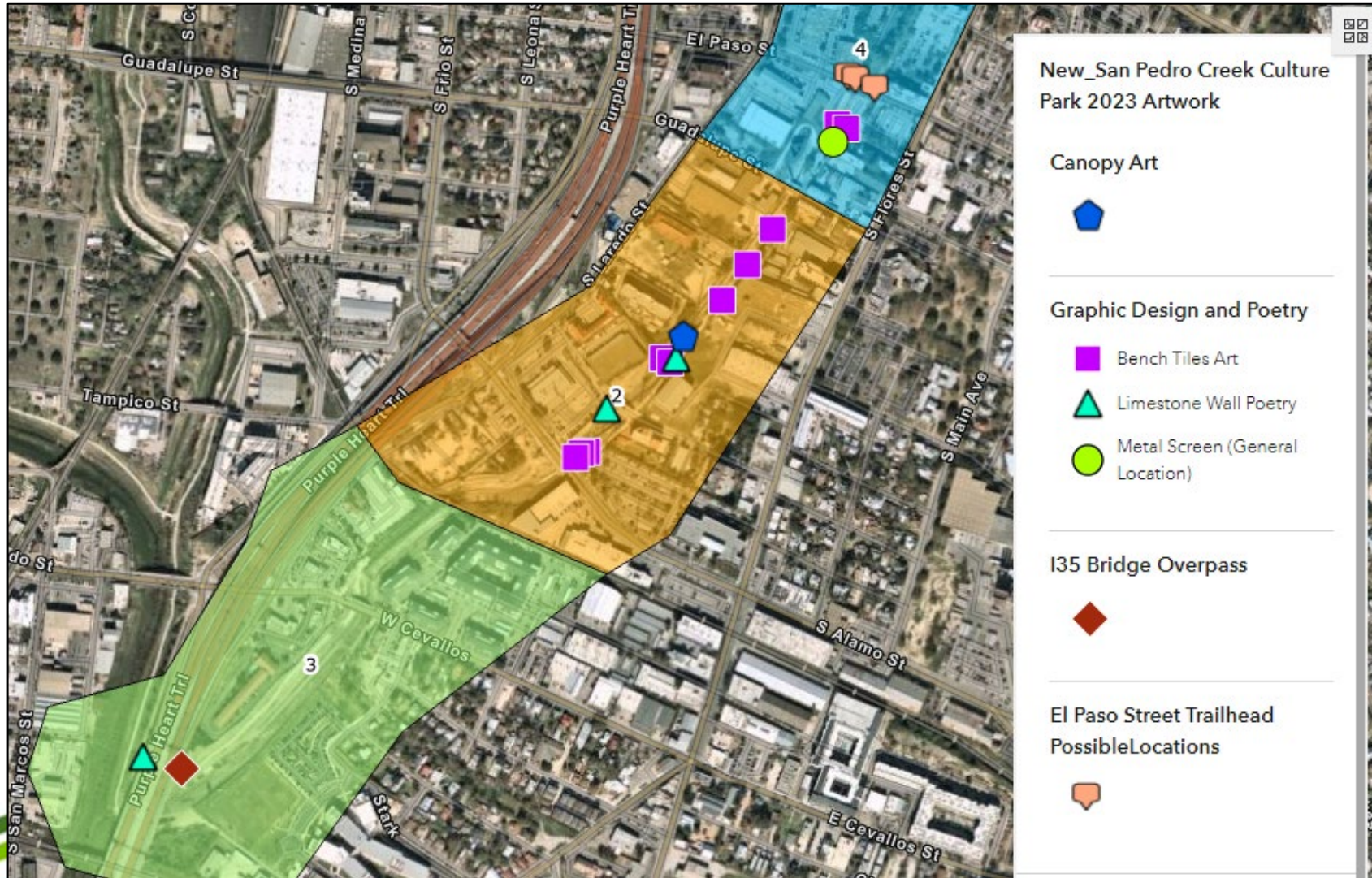


3 locations for
poetry:

- Mustard Seed Plaza (Phase 2)
- Camp Street (Phase 2)
- I-35 (Phase 3)



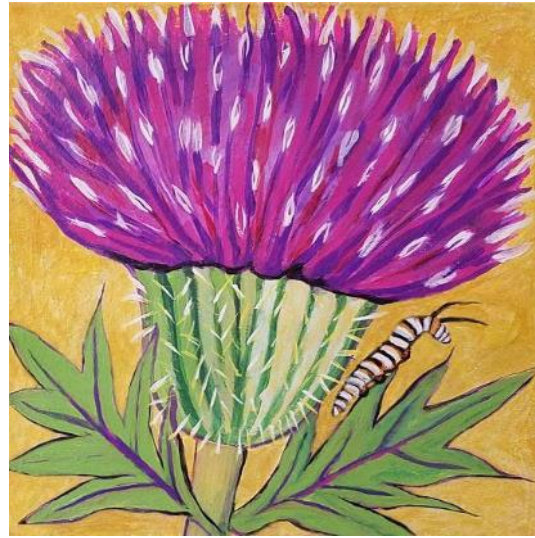
Tiles, Phase 2 & 4 – Leticia Huerta



Tiles, Phase 2 & 4 – Leticia Huerta



Firewheel



Texas Thistle



Esperanza



Celestial Lily



Questions



Events Update

Nicole Marshall



Upcoming Events

- YOGA on the Creek
 - Mondays @ 6pm
- Appreciation Mixer – Ruby City
 - Nov 10th
- Phase 2, 3, & 4.1 Grand Opening Update
 - Phase 2 & 4.1 Sneak Peak Media Event – Oct 11th
 - May 2024



Questions



Adjourn

Next Meeting: October 12th

