



**San Pedro Creek Culture Park  
Advisory Committee  
August 10, 2023**





**AGENDA**  
**AUGUST 10, 2023**  
**SPCCP ADVISORY COMMITTEE MEETING**  
**SAN ANTONIO RIVER AUTHORITY**  
**9:00 A.M.**

1. Welcome and Introductions – Kendall Hayes, SARA (5 minutes)
2. Subcommittee Business (5 minutes)
3. Citizens to be Heard (5 minutes)
4. Approval of the Minutes (2 minutes)
  - a. June 2023
5. Continental Block Redevelopment – Mark Jensen, Weston Urban (10 minutes)
  - a. Project Update
6. Design and Construction Activities – Pablo Garza, SARA (25 minutes)
  - a. Phases 2, 3 & 4.1 Construction Update
  - b. Phase 4.2 Update
7. Public Art – Elizabeth Ibarra, SARA (10 minutes)
  - a. Projects Update
8. Events – Nicole Marshall, SARA (10 minutes)
  - a. Upcoming Events
9. Calendar Items
  - a. Mondays at 6:00 PM – Yoga on the Creek
10. Adjourn



# Subcommittee Business



# Citizens to be Heard





# Approval of the Minutes



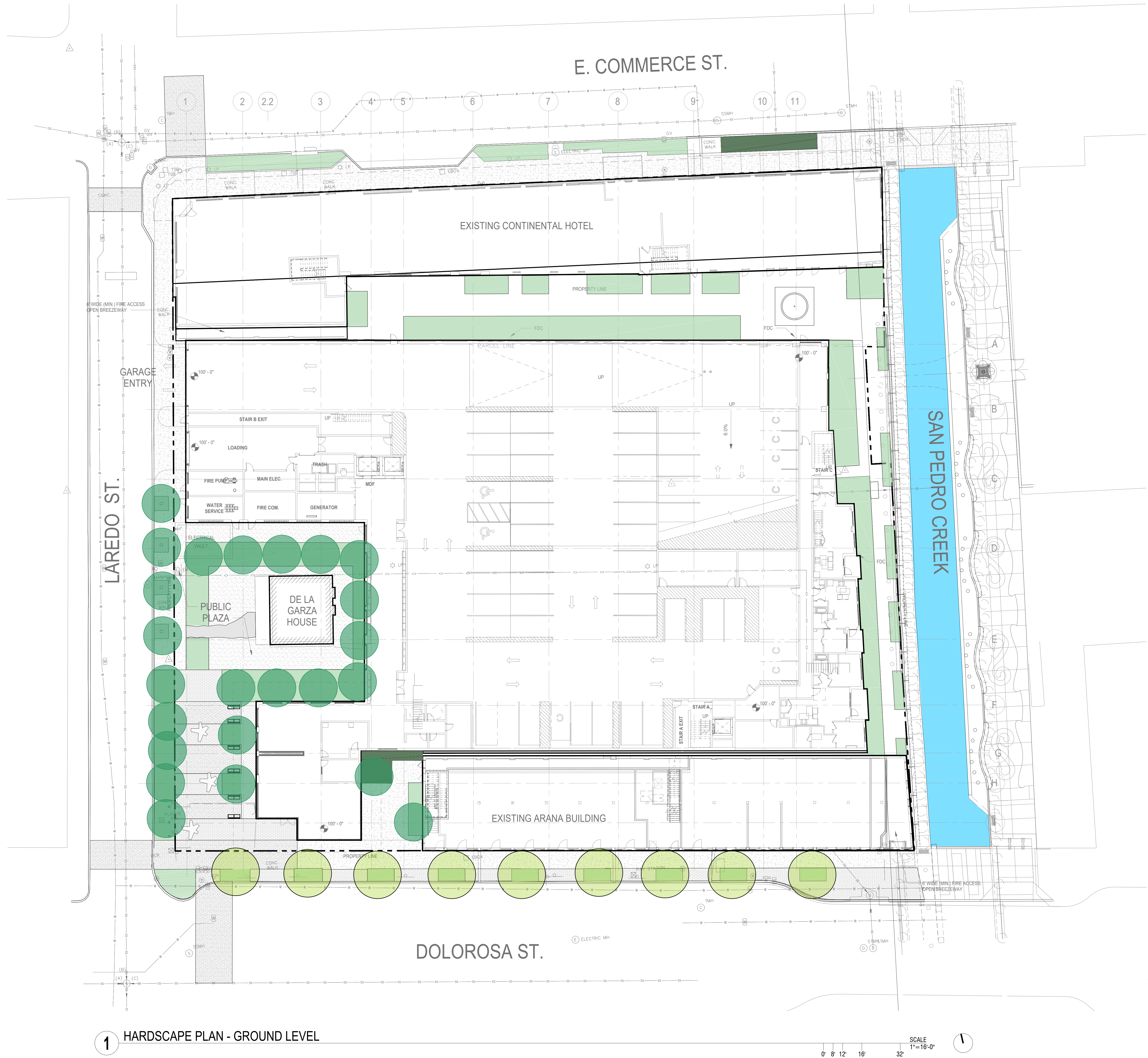
# Continental Block Redevelopment

Mark Jensen  
Weston Urban





PROJECT: 25020021 001.dwg PLOT: 1/25/2021 10:01 AM PLOT: 1/25/2021 10:01 AM PLOT: 1/25/2021 10:01 AM



1 HARDSCAPE PLAN - GROUND LEVEL

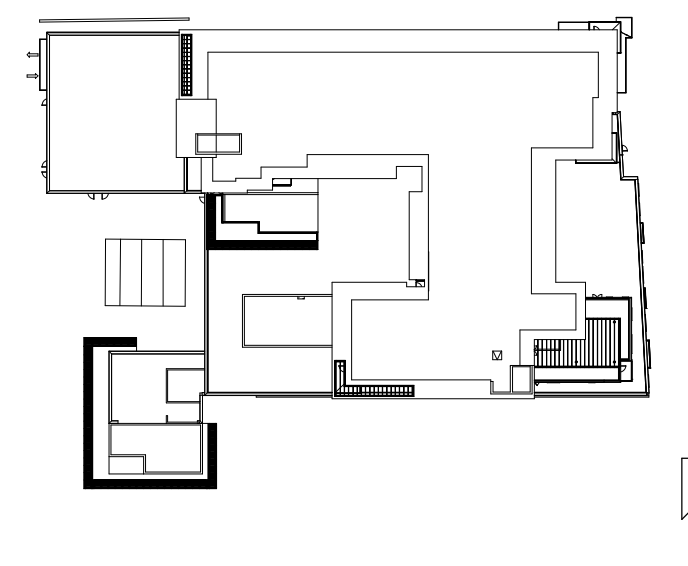
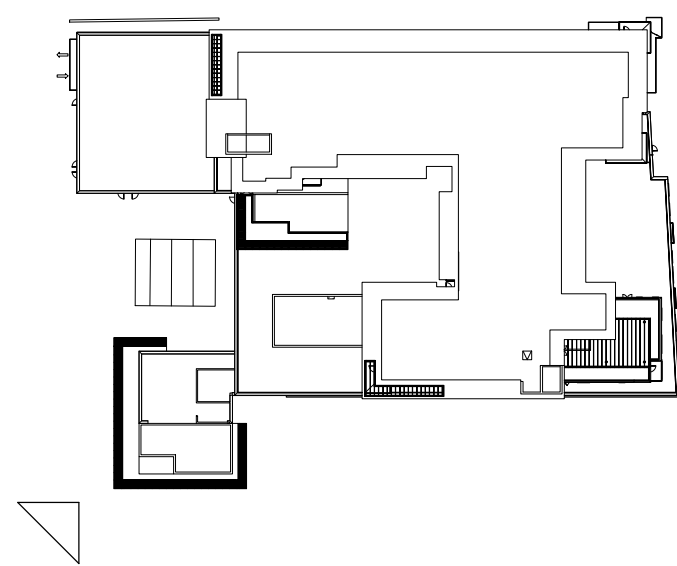


CONSULTANTS

PROJECT TITLE

WESTON URBAN  
- SOUTH LAREDO

ISSUE #	DATE	DESCRIPTION
	10/01/2021	SCHEMATIC DESIGN
	12/23/2021	DESIGN DEVELOPMENT



CERTIFICATION

JACK BOARMAN  
REGISTERED ARCHITECT #11910  
NOT FOR REGULATORY APPROVAL,  
PERMITTING, OR CONSTRUCTION

DRAWN BY	Author
CHECKED BY	Checker
COMMISSION NUMBER	2338.03

SHEET TITLE

RENDERINGS

SHEET NUMBER

G200A

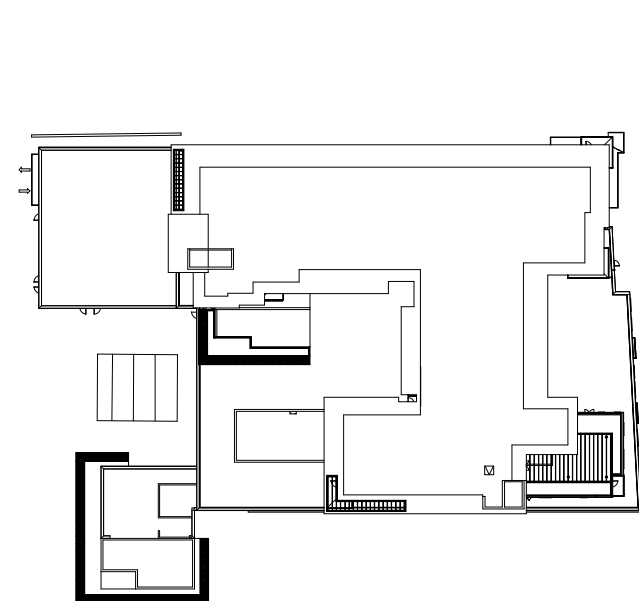
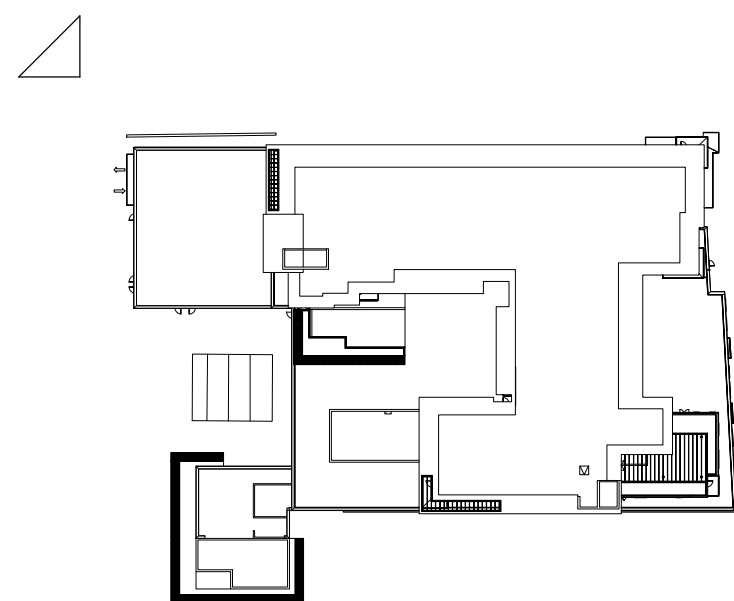


CONSULTANTS

PROJECT TITLE

WESTON URBAN  
- SOUTH LAREDO

ISSUE #	DATE	DESCRIPTION
	10/01/2021	SCHEMATIC DESIGN
	12/23/2021	DESIGN DEVELOPMENT



CERTIFICATION

JACK BOARMAN  
REGISTERED ARCHITECT #11910  
NOT FOR REGULATORY APPROVAL,  
PERMITTING, OR CONSTRUCTION

DRAWN BY	Author
CHECKED BY	Checker
COMMISSION NUMBER	2338 03

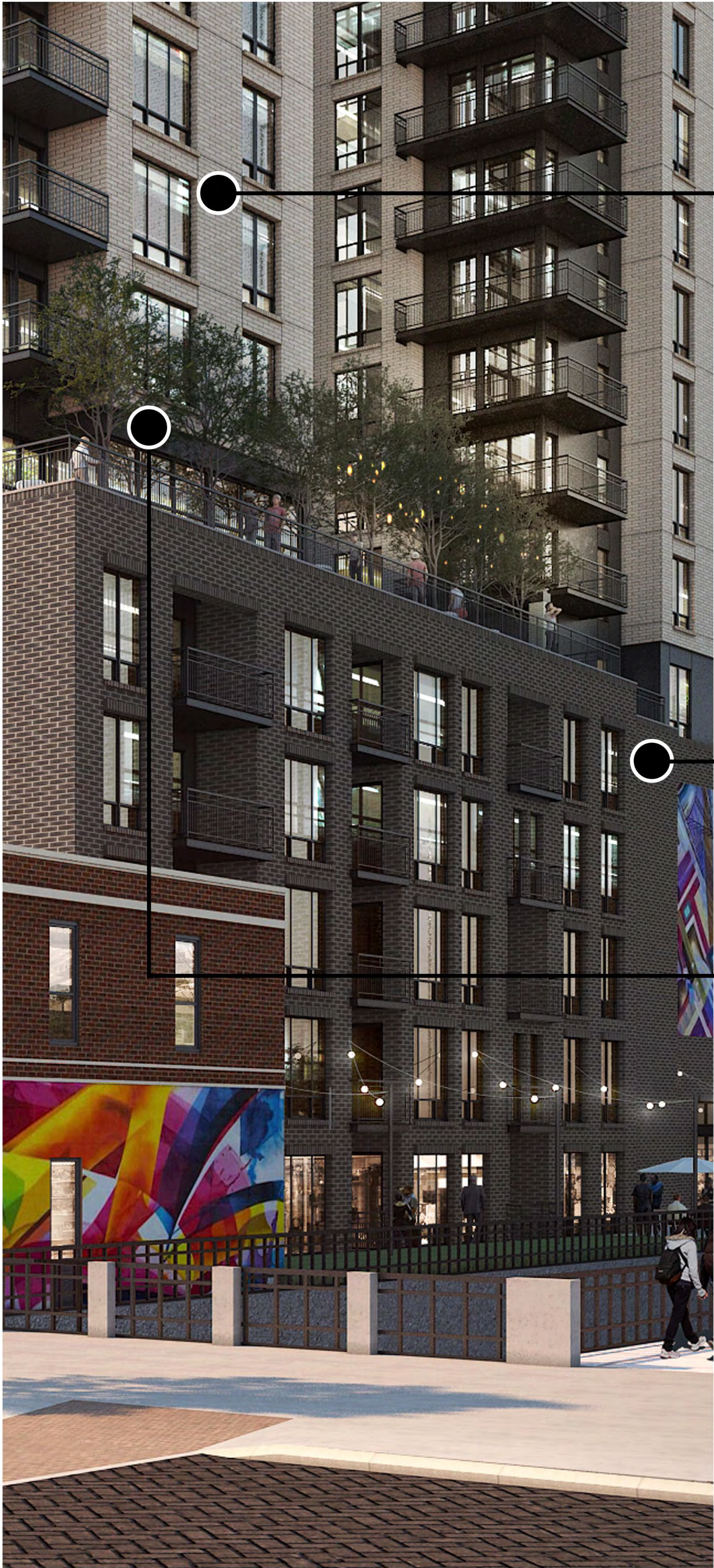
SHEET TITLE

RENDERINGS

SHEET NUMBER

G200B





1 | MATERIAL (ASHGREY UTILITY BRICK)



2 | MATERIAL (EBONY IS UTILITY BRICK)



3 | MATERIAL (DARK GRAY METAL PANEL)



CONSULTANTS

PROJECT TITLE

WESTON URBAN  
- SOUTH LAREDO

ISSUE #	DATE	DESCRIPTION
	10/01/2021	SCHEMATIC DESIGN
	12/23/2021	DESIGN DEVELOPMENT

CERTIFICATION

JACK BOARMAN  
REGISTERED ARCHITECT #11910

NOT FOR REGULATORY APPROVAL,  
PERMITTING, OR CONSTRUCTION

DRAWN BY	Author
CHECKED BY	Checker
COMMISSION NUMBER	2338 03

SHEET TITLE

MATERIAL  
PALETTE

SHEET NUMBER



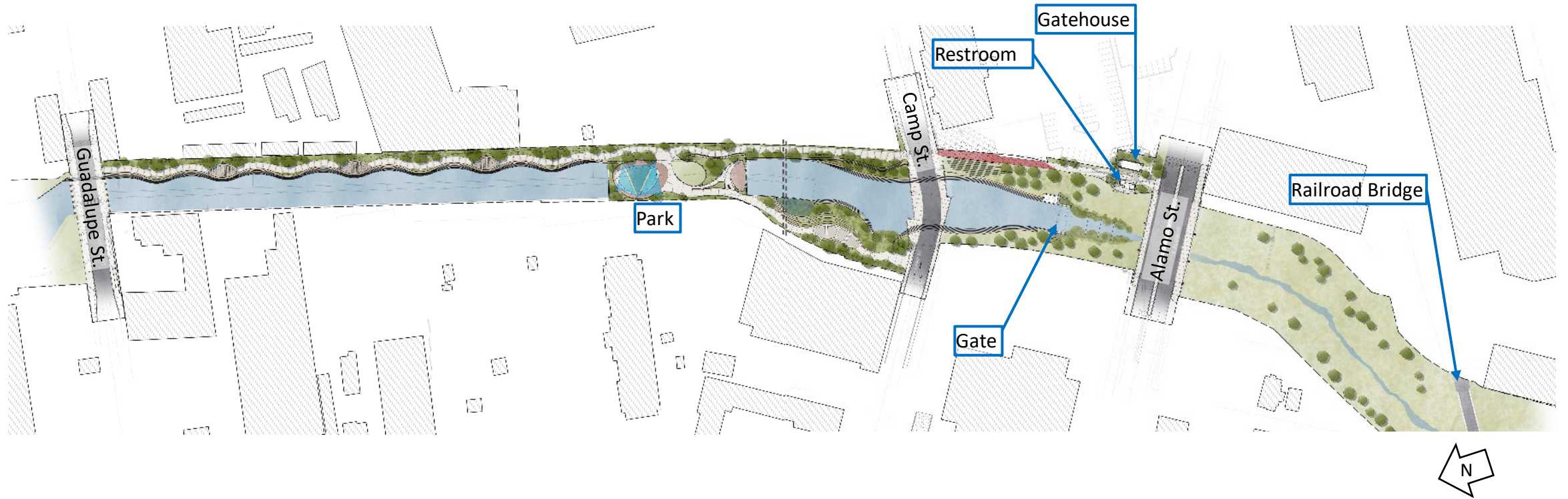
# Construction Updates

**Project Engineer - Pablo Garza, PE**



# San Pedro Creek Project: Phase 2

*Guadalupe Street to S. Alamo Street*

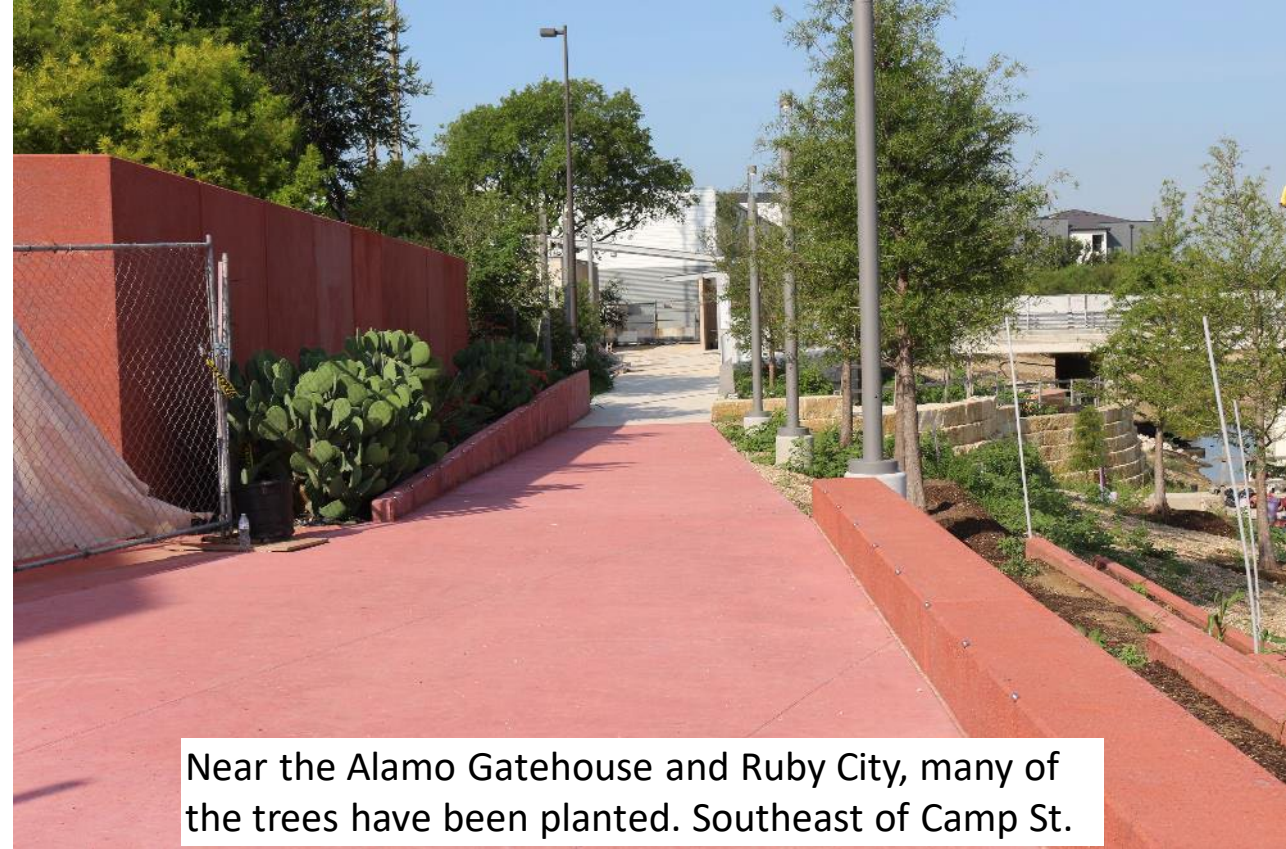




# San Pedro Creek Project: Phase 2

## *Guadalupe Street to S. Alamo Street*

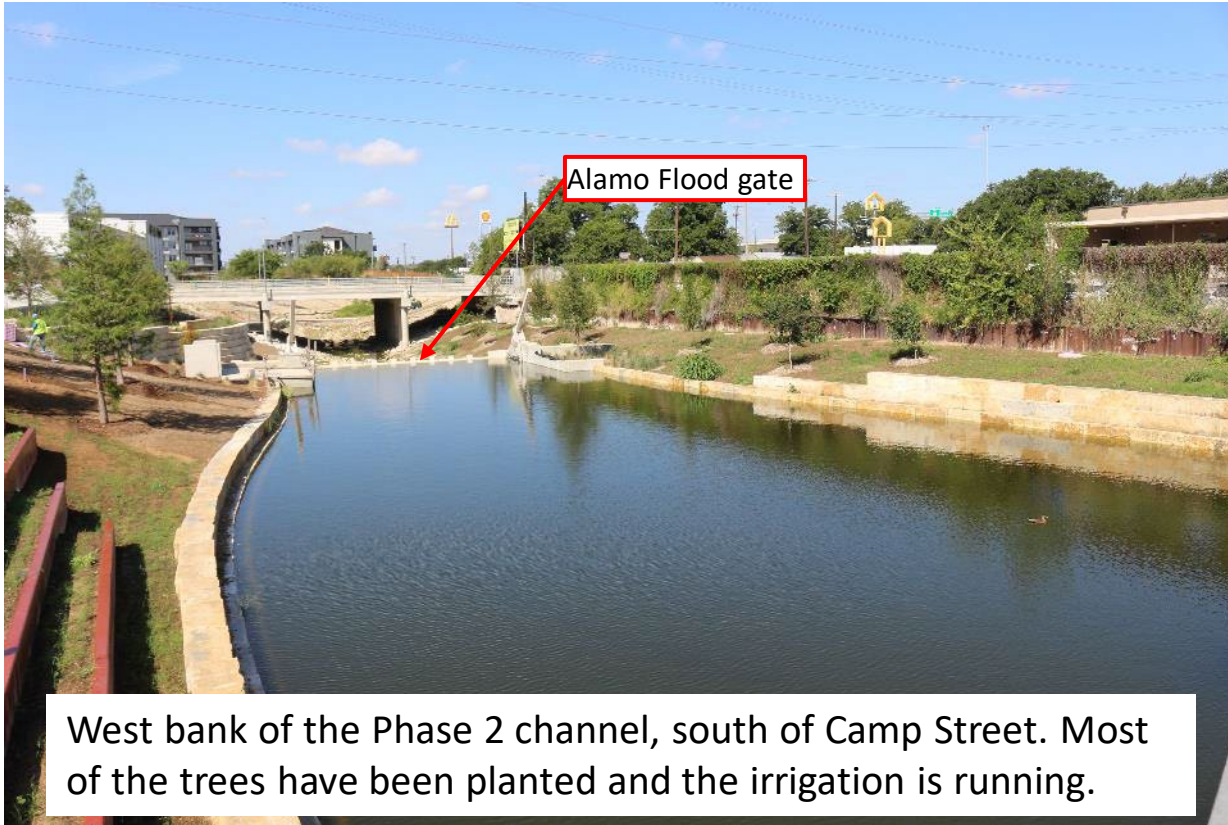
- Alamo gate restrooms and gatehouse are nearly complete.
- Water has been impounded into Phase 2 up to the Alamo flood gate
- Most of the plants have been placed.
- The irrigation system is operating.
- The shade structure and artificial turf are installed at the park north of Camp Street.
- Some of the plants in the park north of Camp Street have been planted.
- Word art is being etched into the MSE walls.





# San Pedro Creek Project: Phase 2

## *Guadalupe Street to S. Alamo Street*





# San Pedro Creek Project: Phase 2

## *Guadalupe Street to S. Alamo Street*



The west bank of the Phase 2 Channel, north of Camp Street. Most of the trees have been planted.



The park north of Camp Street as seen from the southwest corner of the park. Word art being etched.





# San Pedro Creek Project: Phase 2

*Guadalupe Street to S. Alamo Street*



The shade structure has been installed.



Handrail, north of the culvert, is being installed.





# San Pedro Creek Project: Phase 3

*Alamo Street to Confluence w/ Apache Creek*





# San Pedro Creek Project: Phase 3

## *Alamo Street to Confluence w/ Apache Creek*

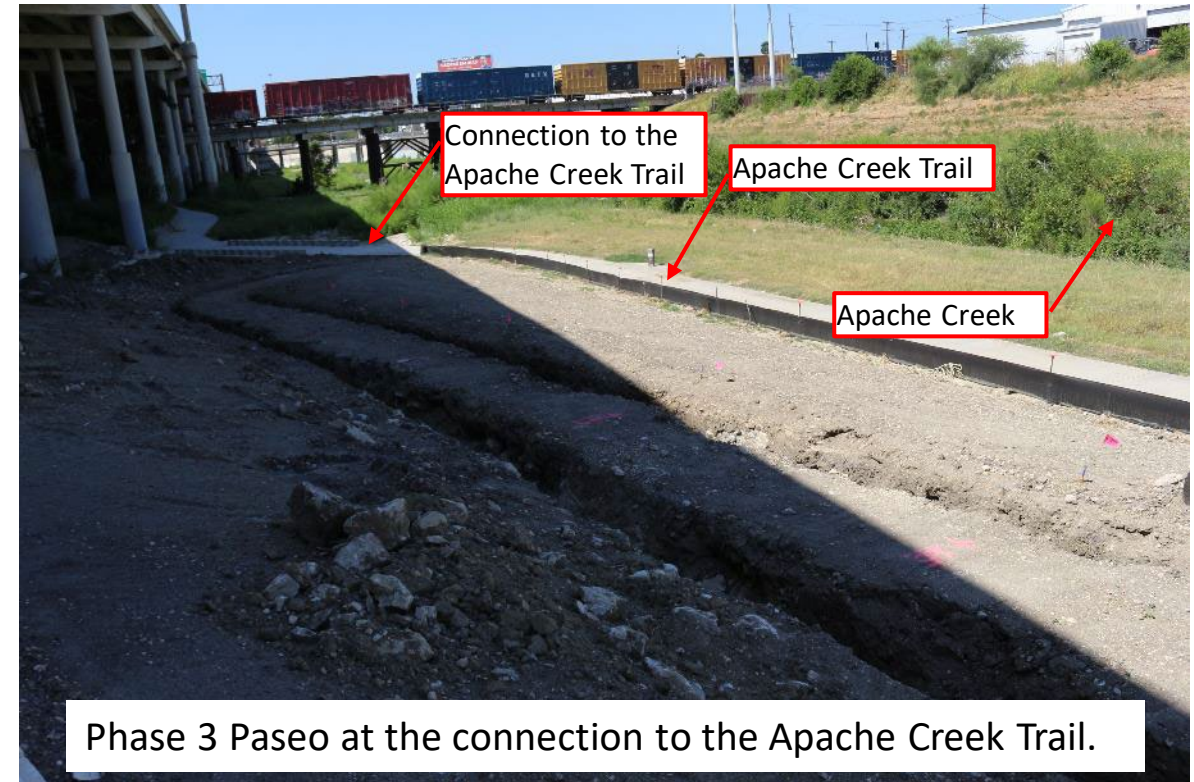
- Paseos and walls are nearing completion along the west bank.
- The riffle pools and stones are completed and are functioning as intended.
- The storm drain penetrations in the slopes of the creek channel are being completed.
- The contractor is preparing to make the connection to the Apache creek.
- The contractor continues to clean the slopes as wild vegetation grows.





# San Pedro Creek Project: Phase 3

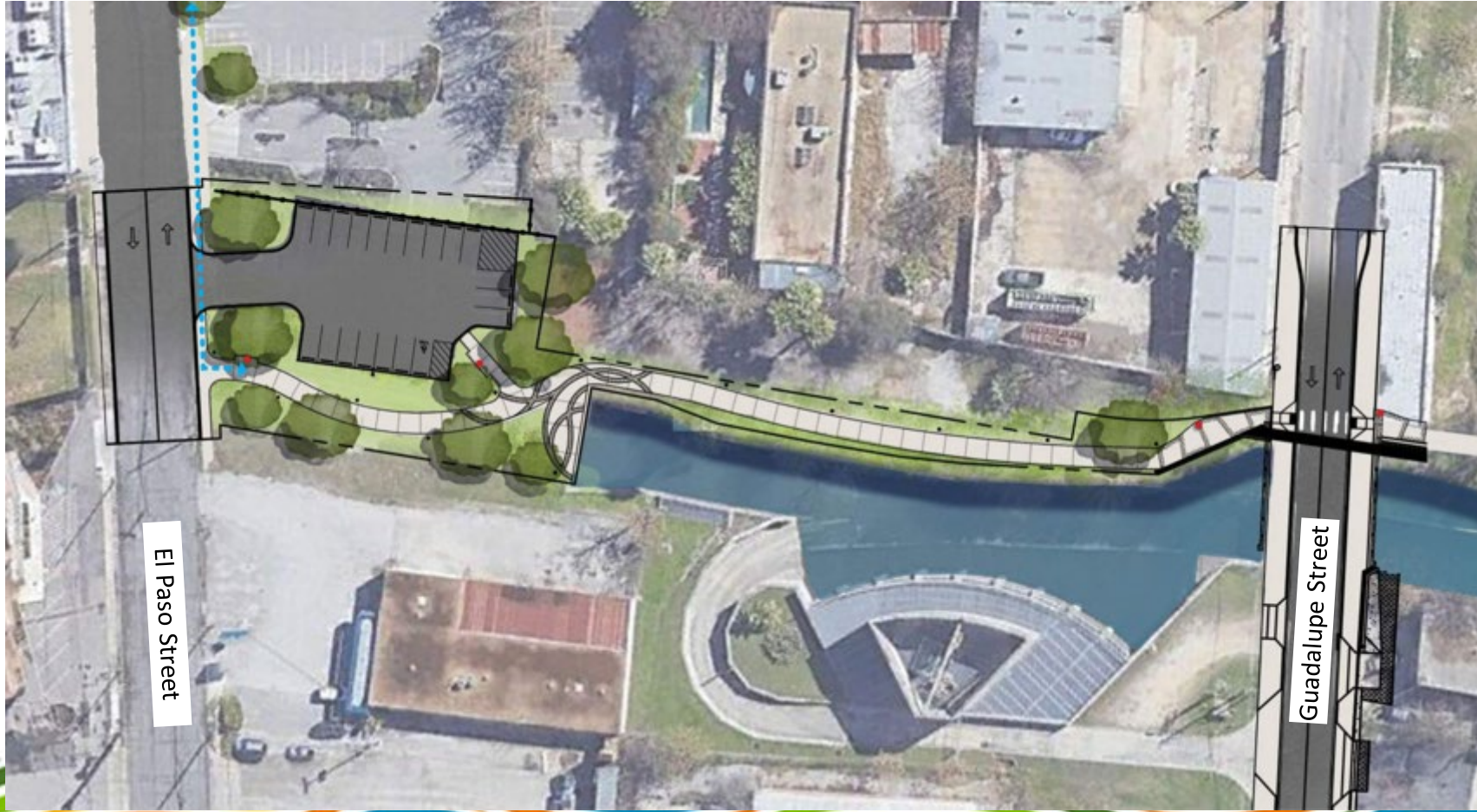
*Alamo Street to Confluence w/ Apache Creek*





# San Pedro Creek Project: Phase 4.1

*Guadalupe Street to El Paso Street*



# San Pedro Creek Project: Phase 4.1

*Guadalupe Street to El Paso Street*

- Construction in 4.1 is well underway and most of the paseo has been poured.
- Modifications of the parking lot are underway.
- Planting is underway.
- Electrical conduits and water lines are being installed.



Phase 4.1 As seen from the north end of the paseo facing south.





# San Pedro Creek Project: Phase 4.1

*Guadalupe Street to El Paso Street*



As seen from Guadalupe Street, facing north.



Some of the El Paso Street Trail Head and planting, as seen facing El Paso.





# San Pedro Creek Project: Phase 4.2

## *El Paso Street to Cesar Chavez*



# Questions





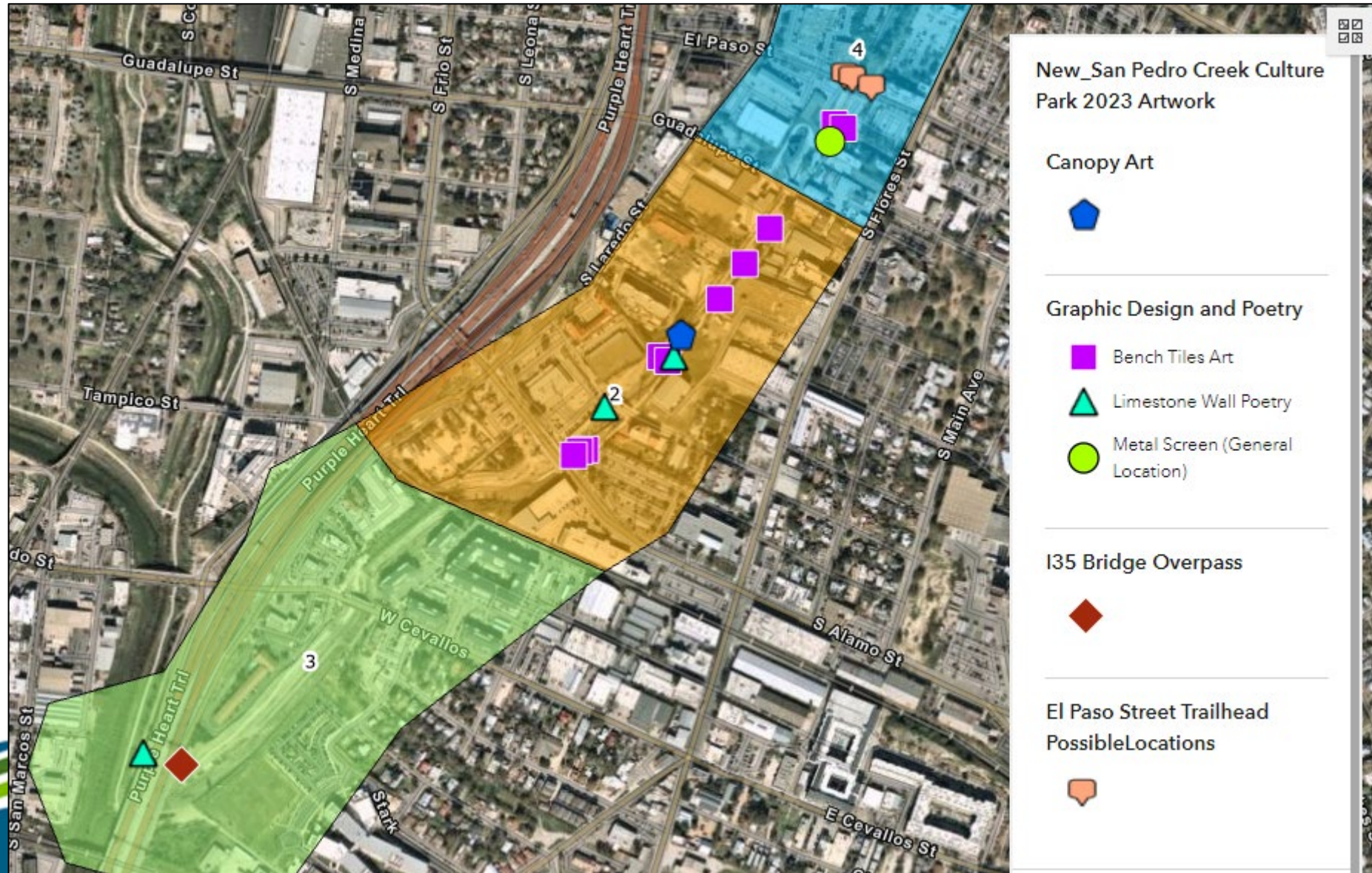
# Public Art Update

**Elizabeth Ibarra**

SARA, SPCCP Art Project Manager

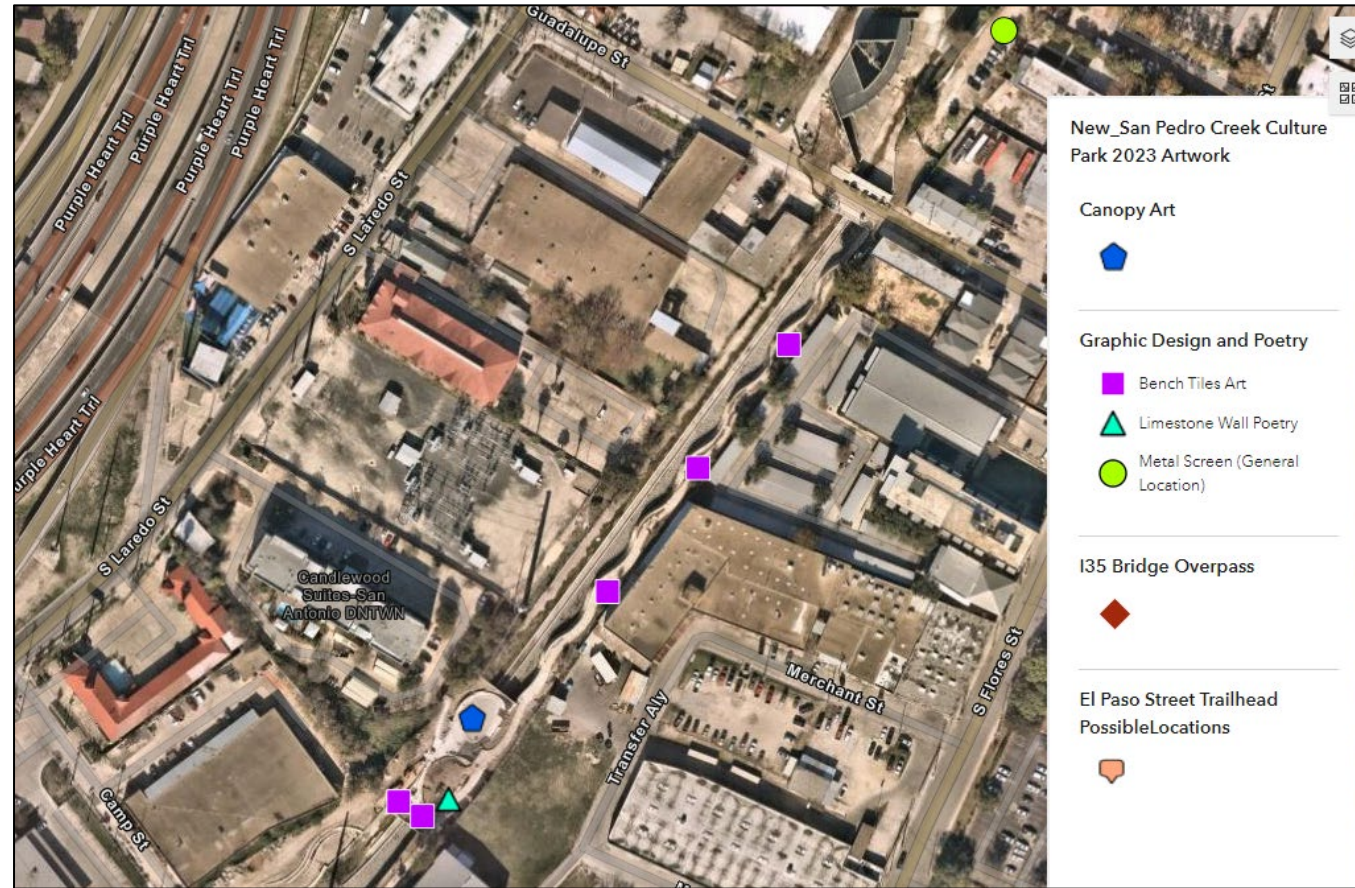


# Overview





# Canopy, Phase 2 – Rikkianne Van Kirk





# *Canopy, Phase 2 – Rikkianne Van Kirk*





# I-35 Bridge Overpass, Phase 3 – Mark Reigelman

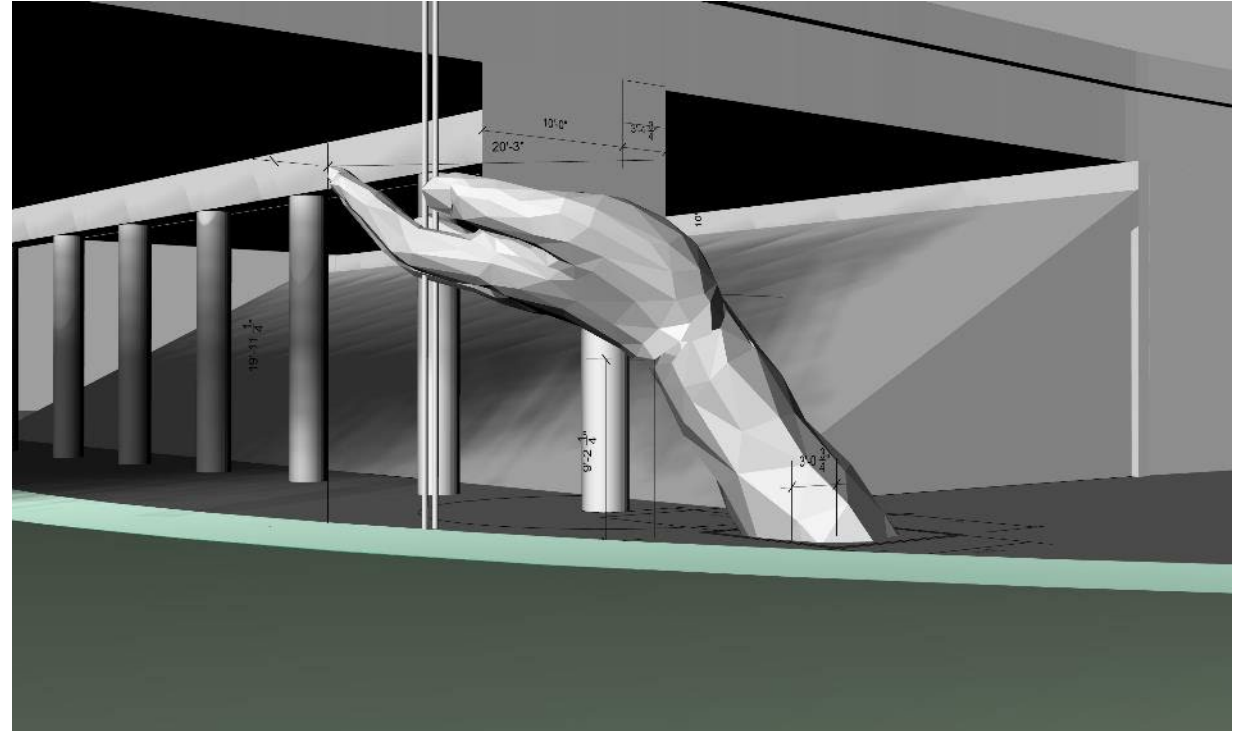




*I-35 Bridge Overpass, Phase 3 – Mark Reigelman*

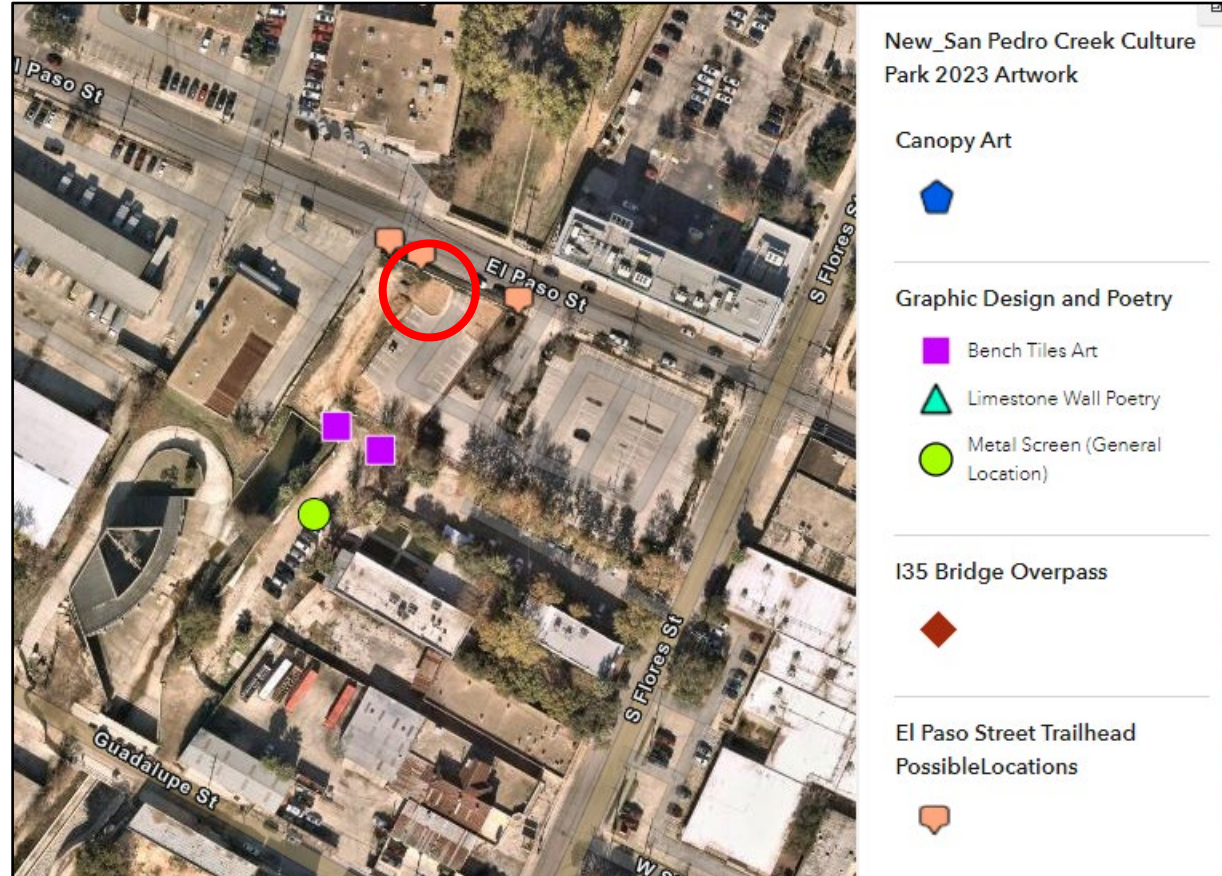


Note: Design details are subject to change.





# EL Paso Street Trailhead, Phase 4 – Diana Kersey

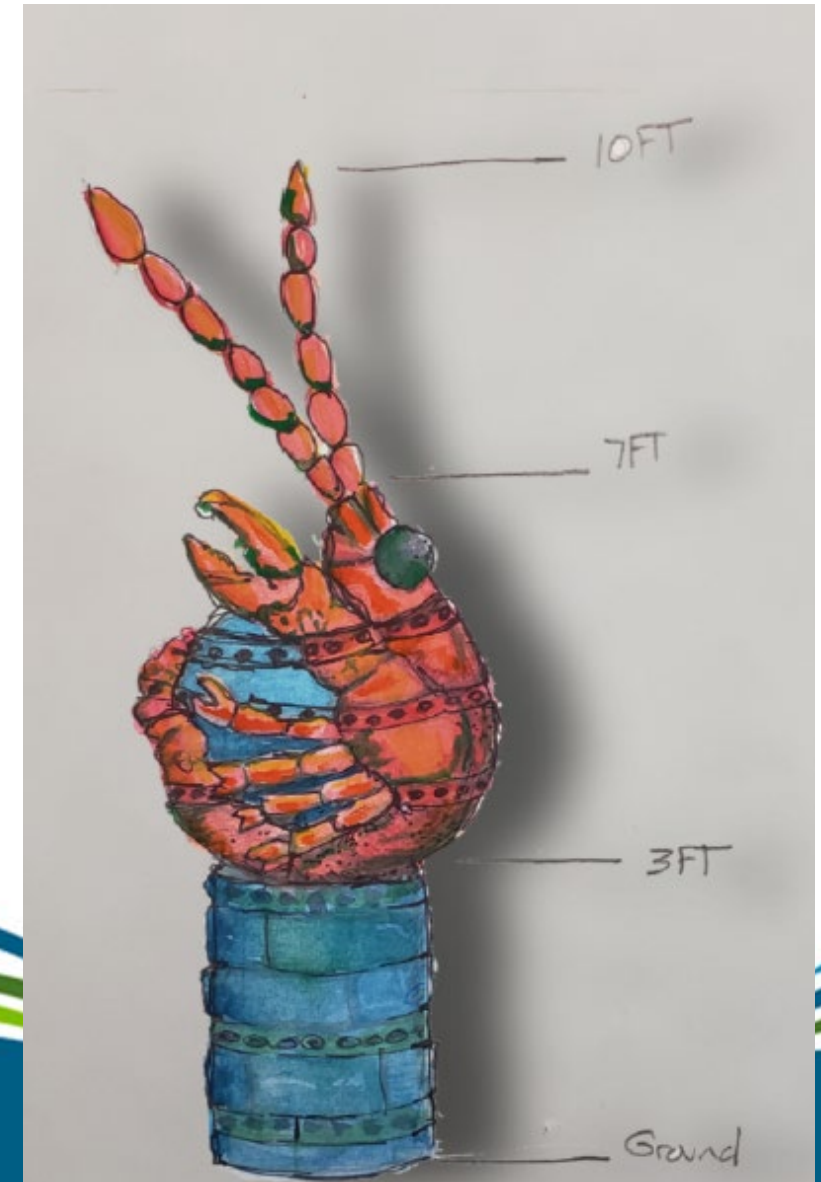


# *EL Paso Street Trailhead, Phase 4 – Diana Kersey*

## Final Design – Crawfish Sculpture (official name TBD)

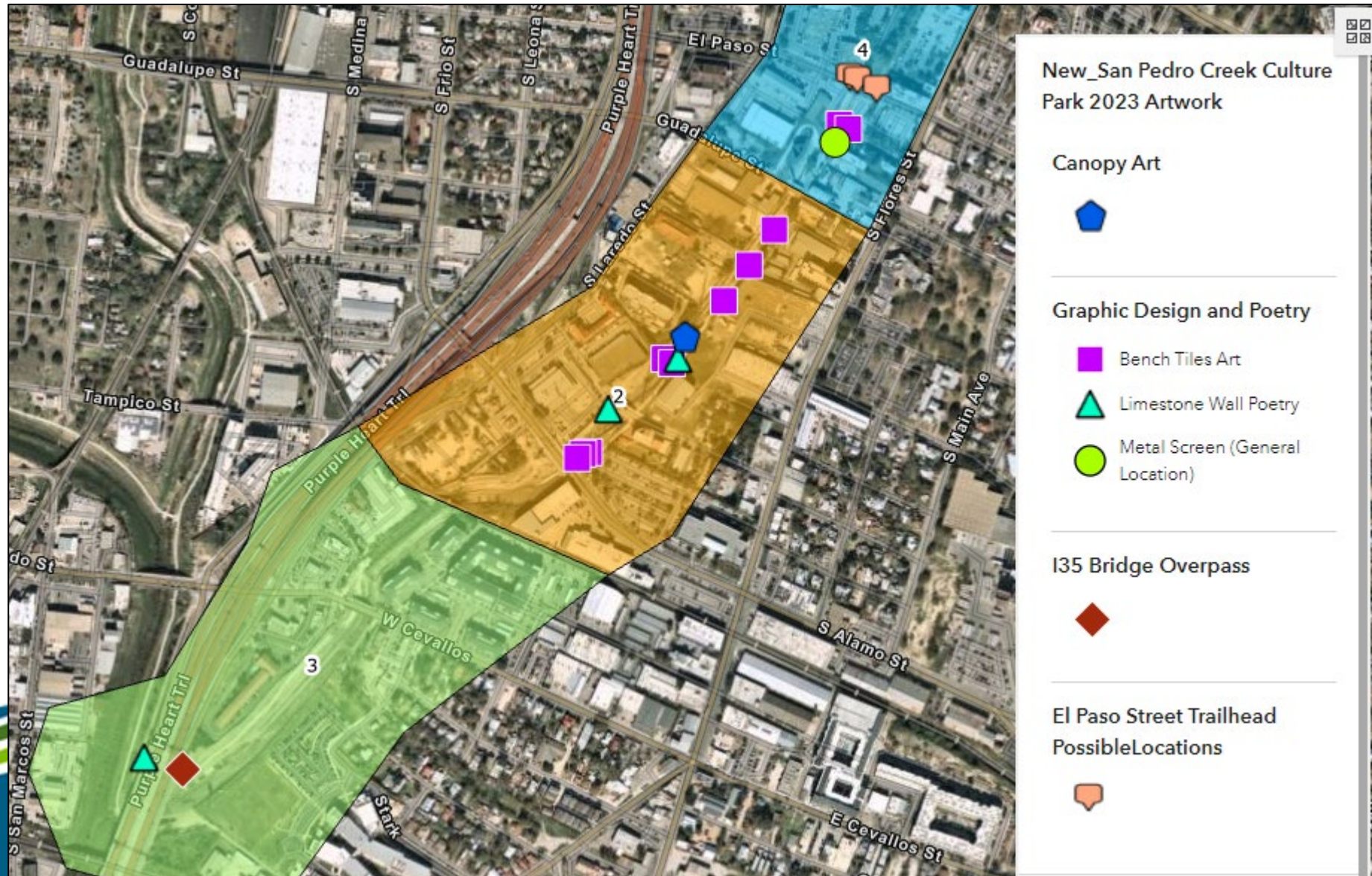
Excerpt from Diana's Narrative Description:

“The artwork itself will be approximately 4x4x3 feet in size (excluding antennae), placed on a circular pedestal.... During the community engagement sessions held at Creekfest in April 23, participants shared their observations of finding remnants of crawfish on the creek paths (from bird feedings) and reminiscing about childhood experiences playing with crawfish at San Pedro Springs Park, as well as encountering them in the nearby Martinez and Alazan creeks....”



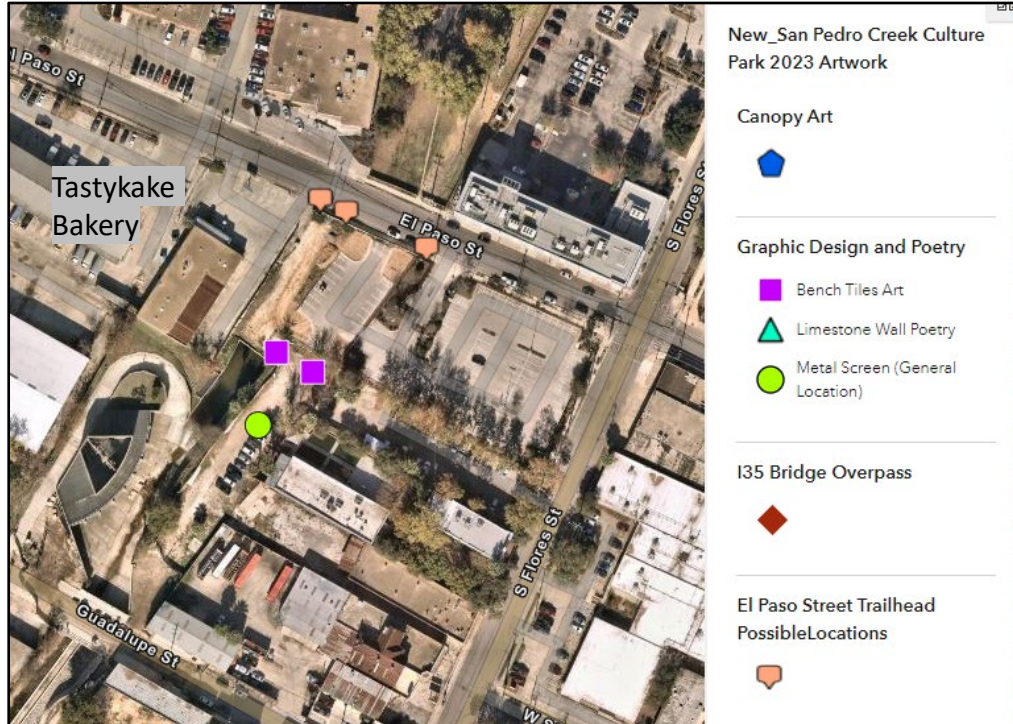


# Graphic Design & Poetry (Tiles, Poetry, Metal Screens)





# Metal Screens, Phase 4 – Elizabeth Carrington





# *Graphic Design & Poetry – Elizabeth Carrington*



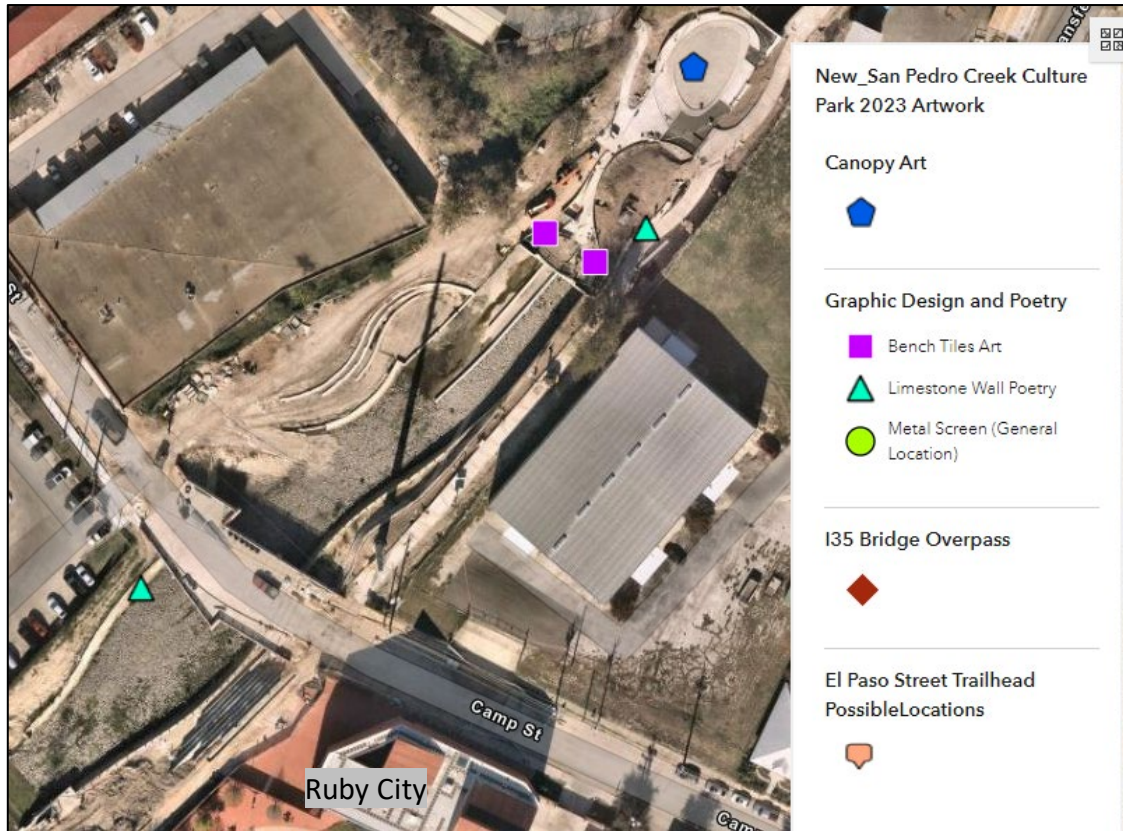


# Graphic Design & Poetry – Elizabeth Carrington





# Poetry, Phase 2 & 3 – Eduardo Vega





# Poetry, Phase 2 & 3 – Eduardo Vega



Culvert location – then and now

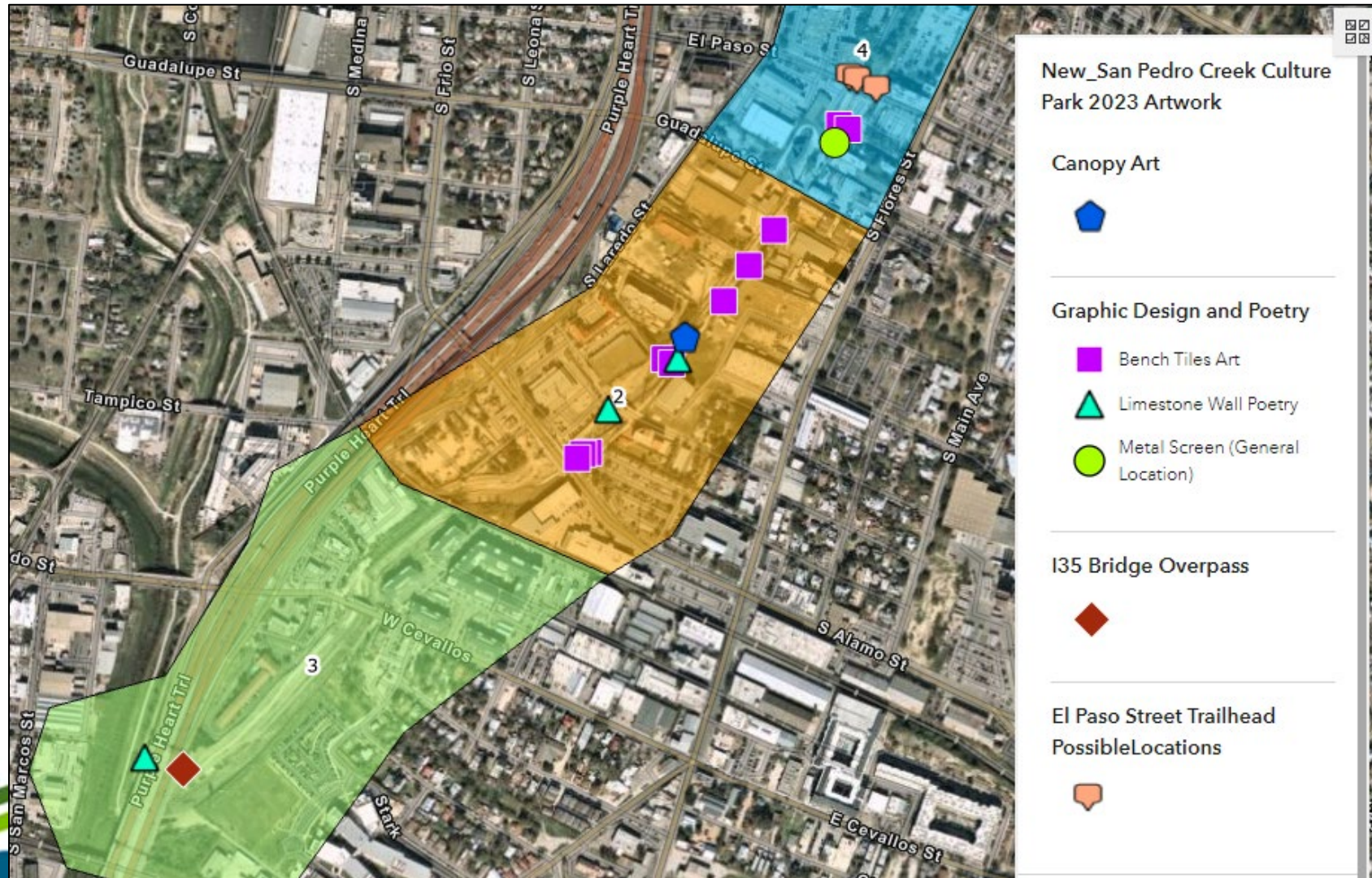


- 3 locations for poetry:**
- Culvert (Phase 2)
  - Camp Street (Phase 2)
  - I35 (Phase 3)





# Tiles, Phase 2 & 4 – Leticia Huerta

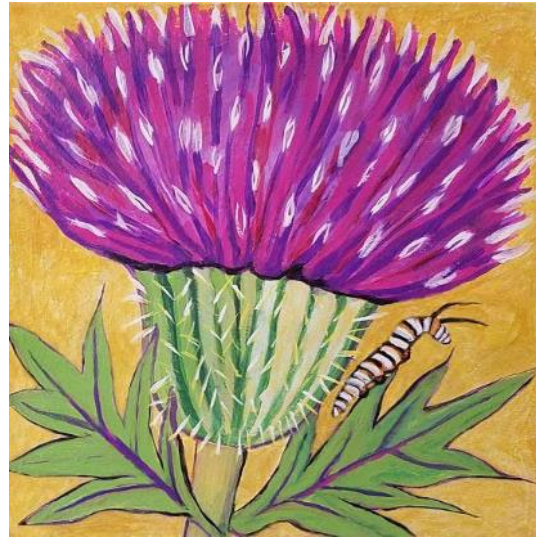




## *Tiles, Phase 2 & 4 – Leticia Huerta*



**Firewheel**



**Texas Thistle**



**Esperanza**



**Celestial Lily**





# Questions





# Events Update

Nicole Marshall





# Upcoming Events

- YOGA on the Creek
  - Mondays @ 6pm
- Community Drum Circle
  - Tuesday, Aug 8<sup>th</sup> @ 7pm at Plaza de Fundación
- Appreciation Mixer – Ruby City/TPR
  - Nov 10<sup>th</sup>
- Phase 2, 3, & 4.1 Grand Opening Update
  - Phase 2 & 4.1 soft opening – late September
  - May 2024





# Before and After – Santa Rosa





# Before and After – Travis





# Before and After – Alameda





# Before and After - STREAM





# Before and After – Commerce





# Before and After – Calder Alley





# Before and After – Dolorosa





# Before and After – Nueva





# Before and After – Graham





# Questions





# Adjourn

**Next Meeting: September 14<sup>th</sup>**

