



**San Pedro Creek Culture Park  
Advisory Committee  
June 8, 2023**





**AGENDA**  
**JUNE 8, 2023**  
**SPCCP ADVISORY COMMITTEE MEETING**  
**SAN ANTONIO RIVER AUTHORITY**  
**9:00 A.M.**

1. Welcome and Introductions – Kendall Hayes, SARA (5 minutes)
2. Subcommittee Business (5 minutes)
3. Citizens to be Heard (5 minutes)
4. Approval of the Minutes (2 minutes)
  - a. April 2023
5. Design and Construction Activities – Pablo Garza, SARA (25 minutes)
  - a. Phases 2, 3 & 4.1 Construction Update
  - b. Phase 4.2 Update
6. Public Art – Elizabeth Garcia, SARA (10 minutes)
  - a. Projects Update
7. Events – Nicole Marshall, SARA (10 minutes)
  - a. Upcoming Events
8. Calendar Items
  - a. Mondays at 6:00 PM – Yoga on the Creek
  - b. Tuesday, June 13<sup>th</sup> – Community Drum Circle
9. Adjourn



# Subcommittee Business



# Citizens to be Heard



# Approval of the Minutes



# Construction Updates

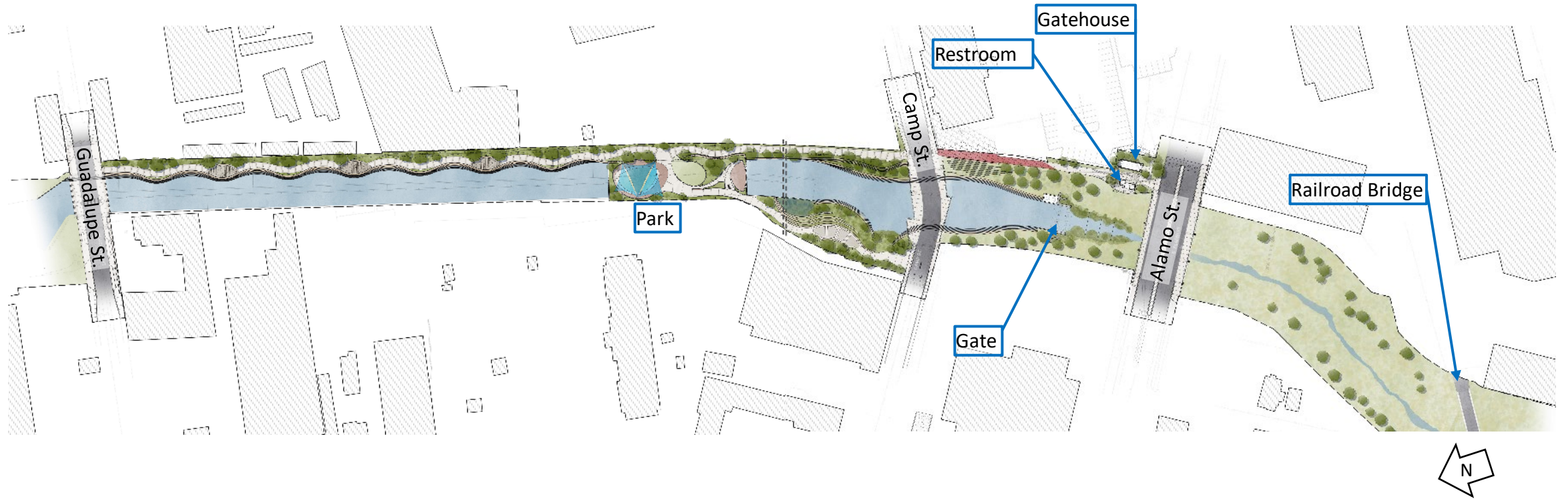
Project Engineer - Pablo Garza, PE





# San Pedro Creek Project: Phase 2

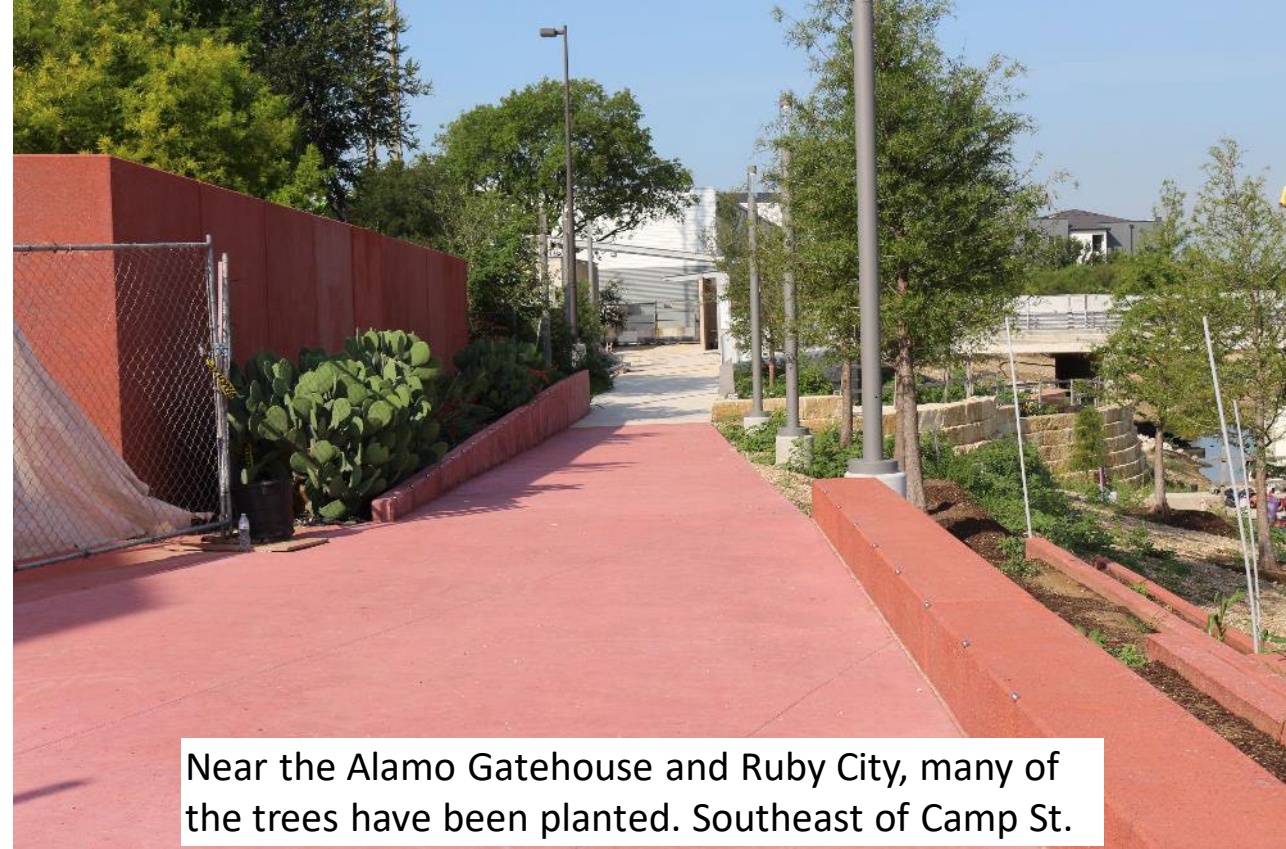
*Guadalupe Street to S. Alamo Street*



# San Pedro Creek Project: Phase 2

## *Guadalupe Street to S. Alamo Street*

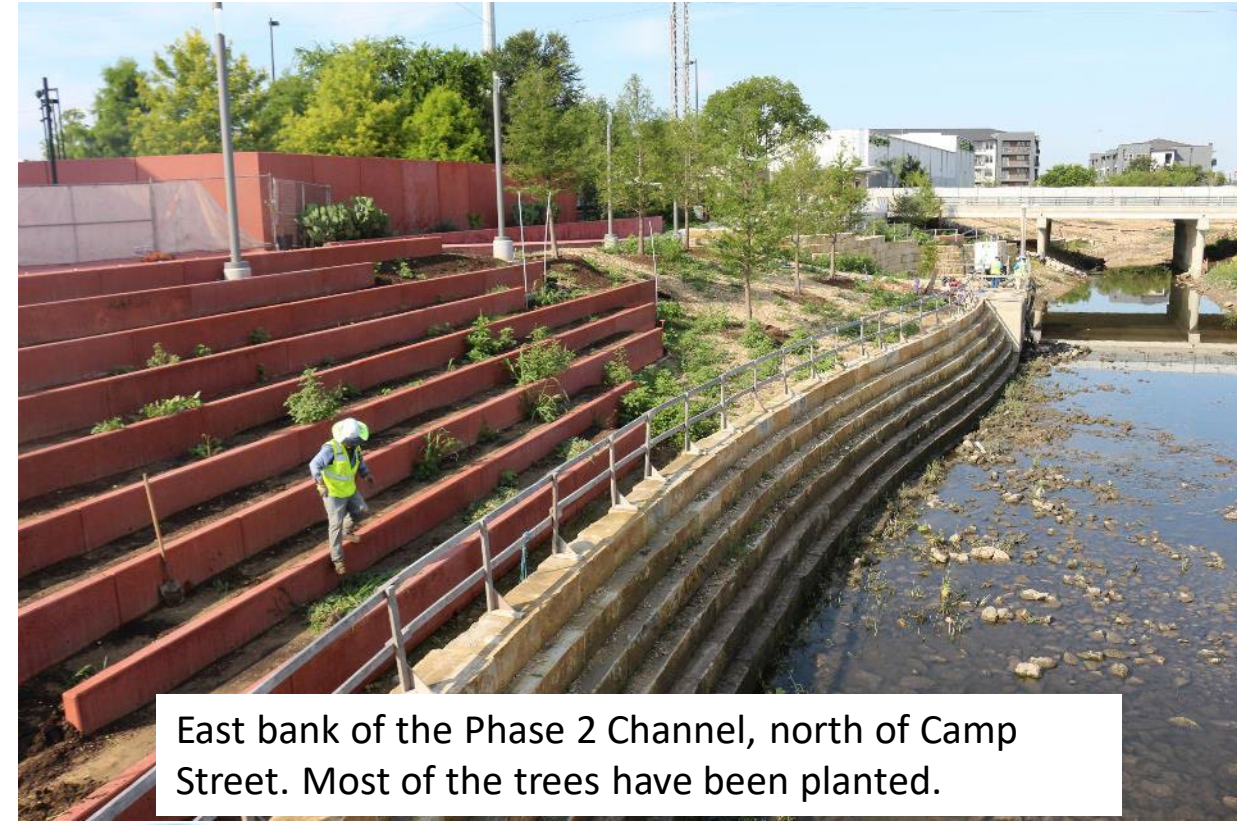
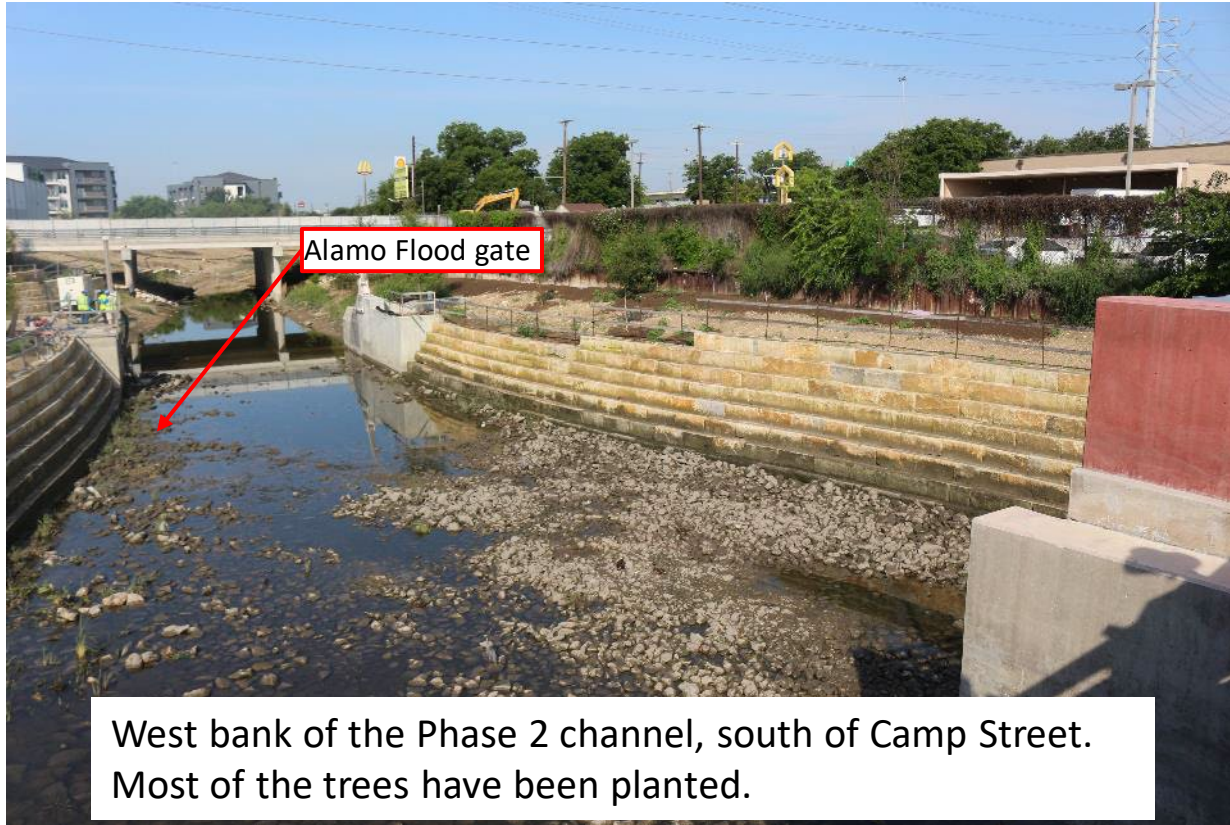
- Alamo gate restrooms and gatehouse are nearly complete.
- Most of the trees have been planted.
- The shade structure and artificial turf are installed at the park north of Camp Street.
- Some of the plants in the park north of Camp Street have been planted.





# San Pedro Creek Project: Phase 2

## *Guadalupe Street to S. Alamo Street*





# San Pedro Creek Project: Phase 2

*Guadalupe Street to S. Alamo Street*





# San Pedro Creek Project: Phase 2

*Guadalupe Street to S. Alamo Street*



The shade structure has been installed.



Handrail, north of the culvert, is being installed.





# San Pedro Creek Project: Phase 3

*Alamo Street to Confluence w/ Apache Creek*





# San Pedro Creek Project: Phase 3

## *Alamo Street to Confluence w/ Apache Creek*

- Paseos and walls are nearing completion along the west bank.
- The riffle pools and stones are completed and are functioning as intended.
- The storm drain penetrations in the slopes of the creek channel are being completed.





# San Pedro Creek Project: Phase 3

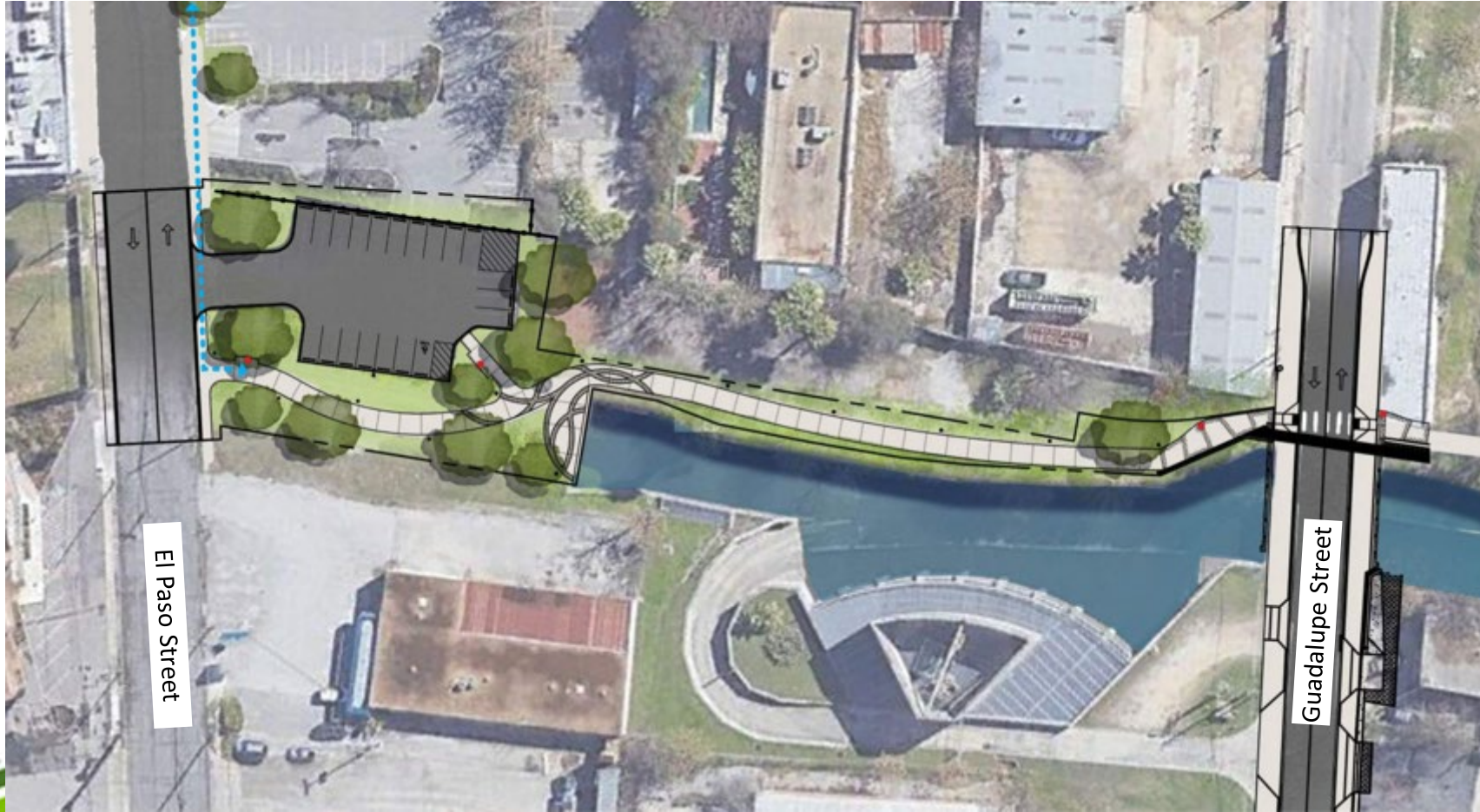
*Alamo Street to Confluence w/ Apache Creek*





# San Pedro Creek Project: Phase 4.1

*Guadalupe Street to El Paso Street*



# San Pedro Creek Project: Phase 4.1

*Guadalupe Street to El Paso Street*

- Construction in 4.1 is well underway and most of the paseo has been poured.
- Modifications of the parking lot are underway.
- Electrical conduits and water lines are being installed.





# San Pedro Creek Project: Phase 4.1

*Guadalupe Street to El Paso Street*



As seen from Guadalupe Street, facing north.





# San Pedro Creek Project: Phase 4.2

## *El Paso Street to Cesar Chavez*



# Questions



# Public Art Update

**Elizabeth Garcia**

SARA, SPCCP Art Project Manager



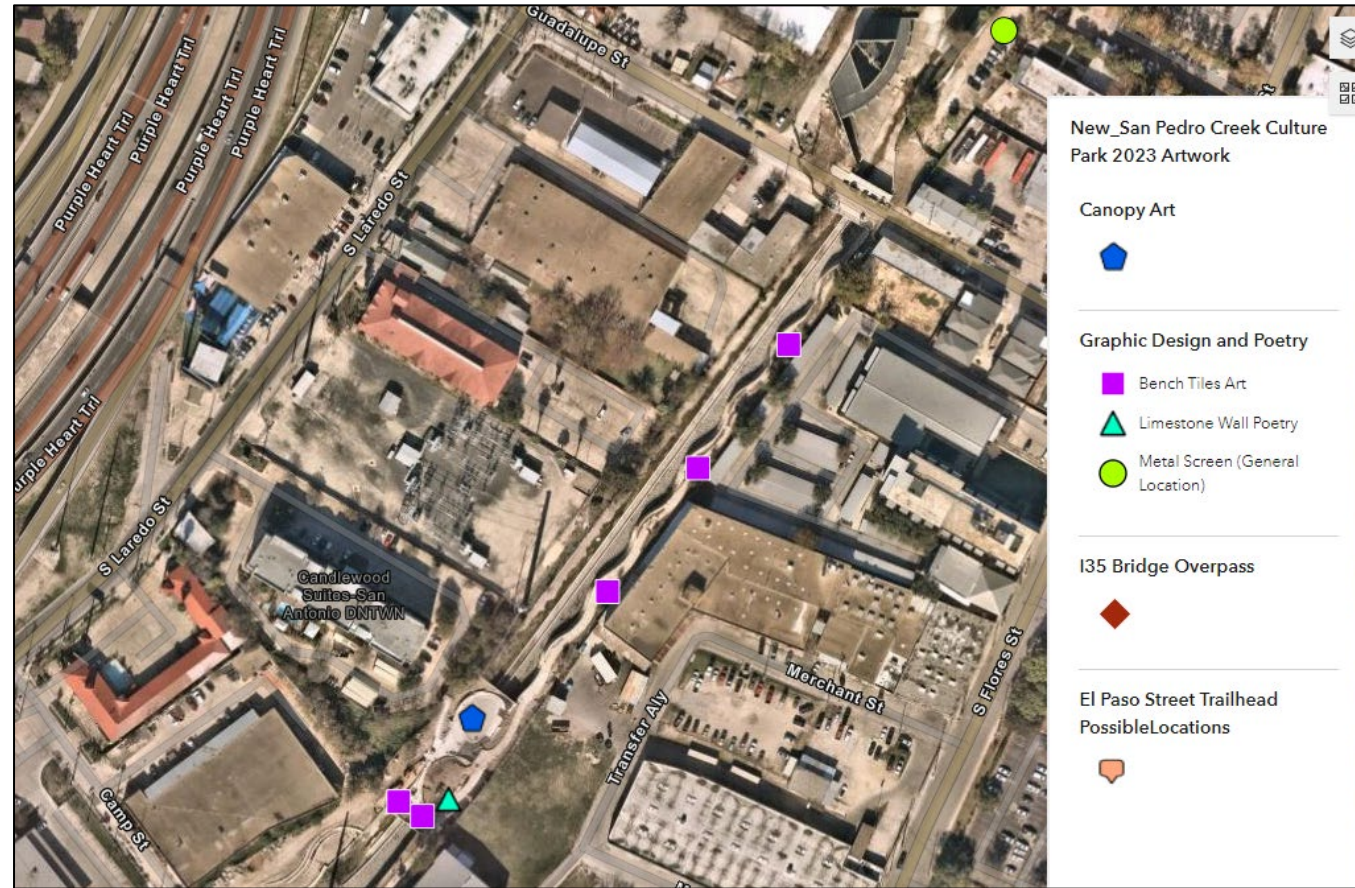


# Overview





# Canopy, Phase 2 – Rikkianne Van Kirk





# *Canopy, Phase 2 – Rikkianne Van Kirk*





# I-35 Bridge Overpass, Phase 3 – Mark Reigelman

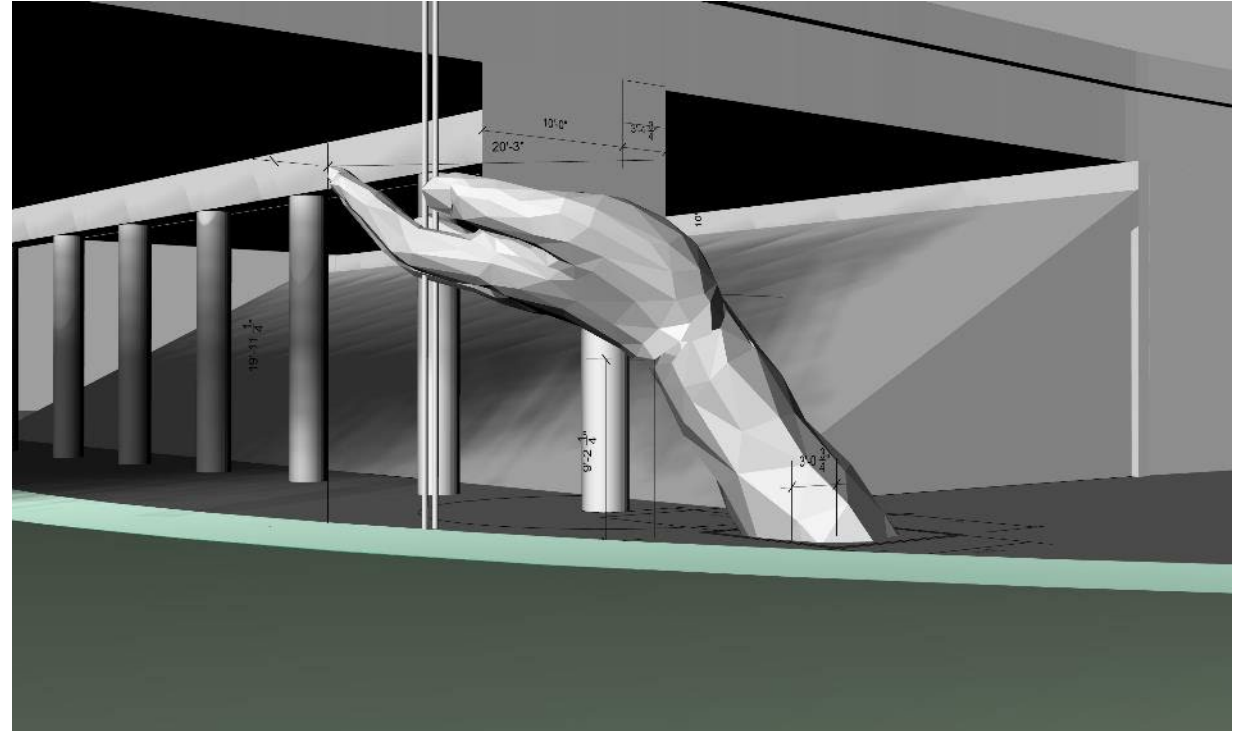




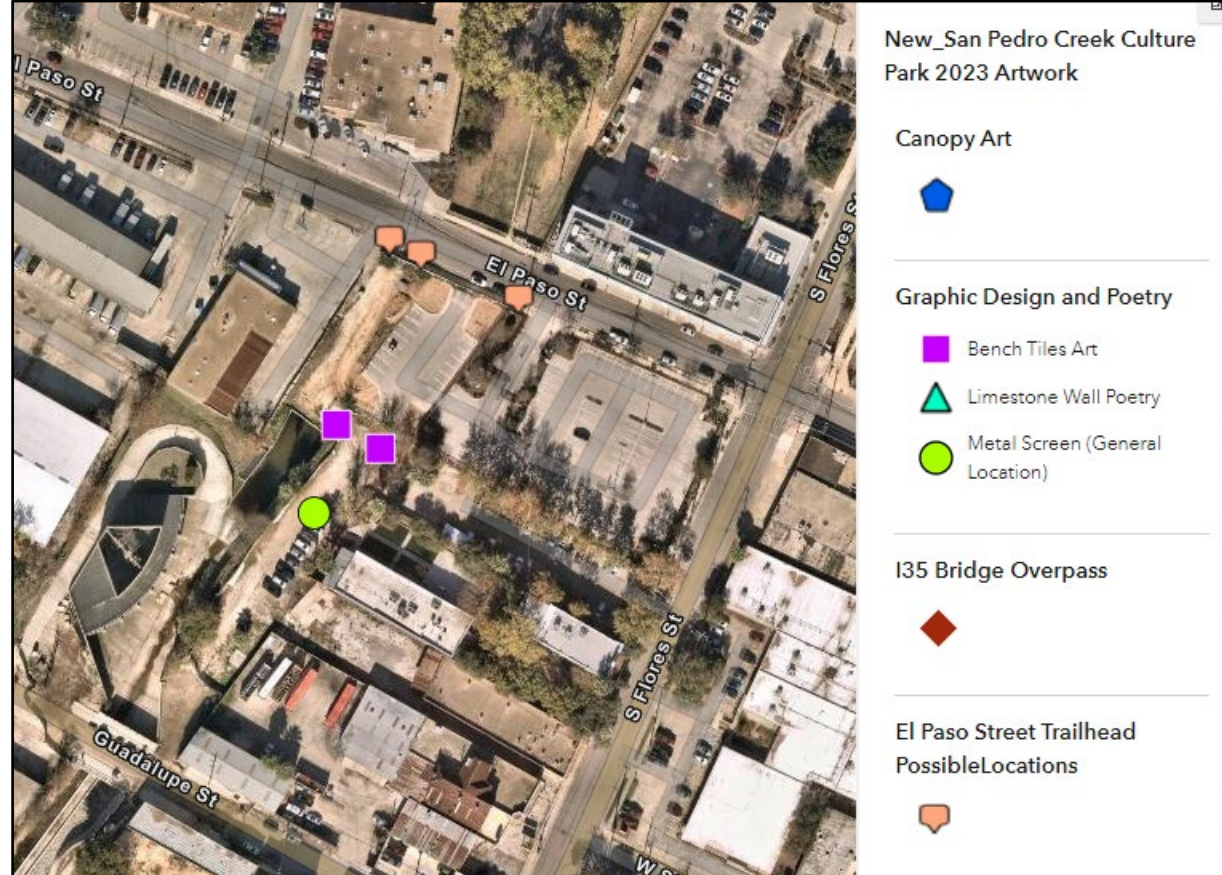
*I-35 Bridge Overpass, Phase 3 – Mark Reigelman*



Note: Design details are subject to change.



# *EL Paso Street Trailhead, Phase 4 – Diana Kersey*





# *EL Paso Street Trailhead, Phase 4 – Diana Kersey*

**The Guardians Five Point  
VIA Metropolitan Transit SA**



**Bridges of Understanding  
San Pedro Creek Culture Park**

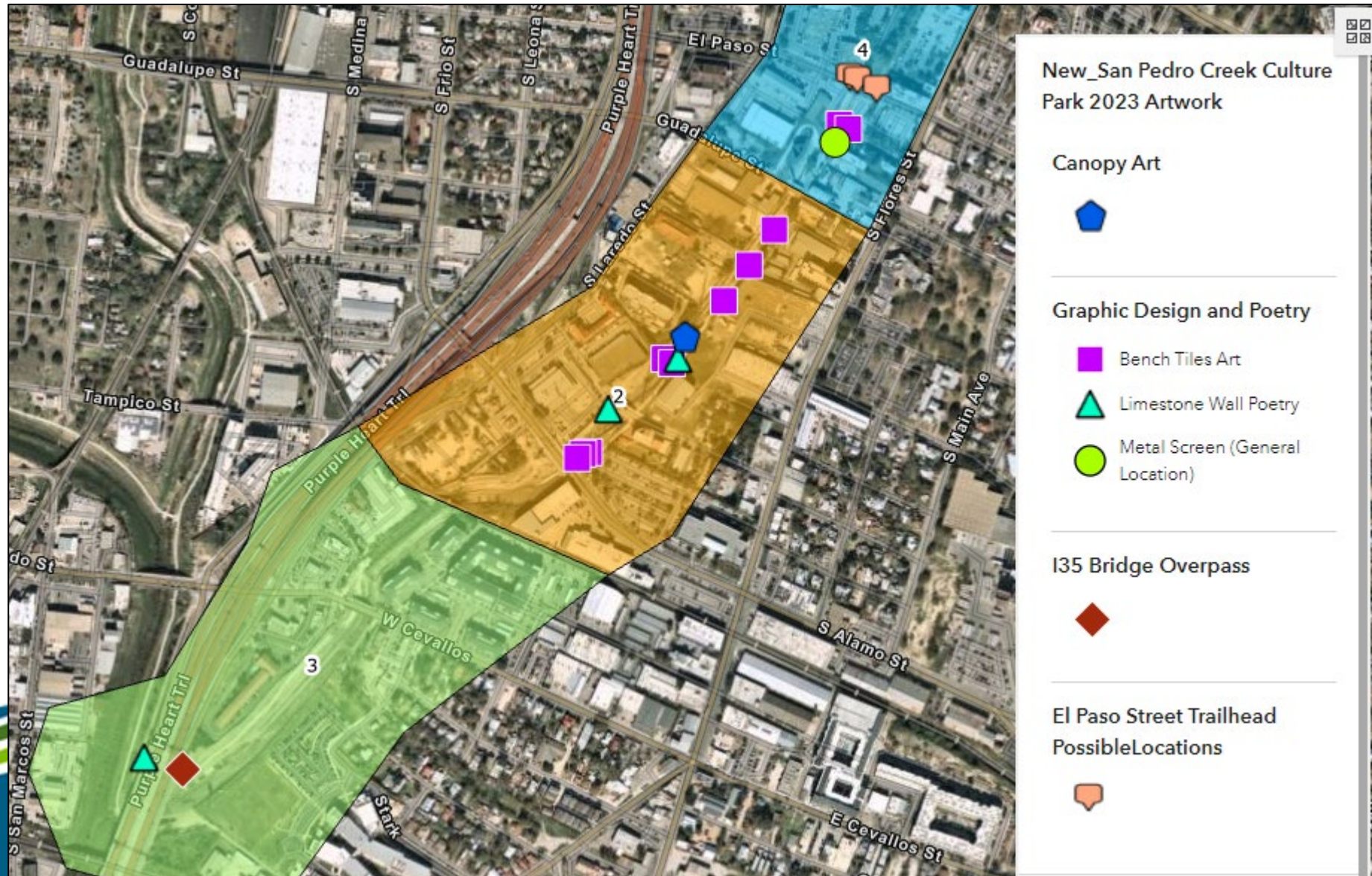


**Creek Fest!**



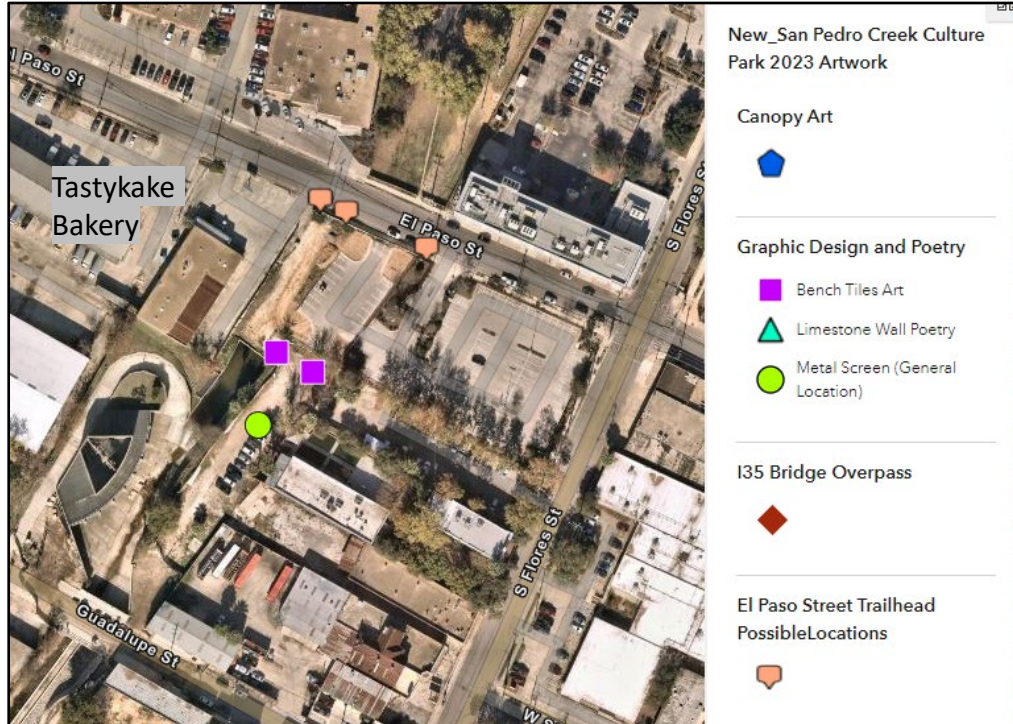


# Graphic Design & Poetry (Tiles, Poetry, Metal Screens)





# Metal Screens, Phase 4 – Elizabeth Carrington





# *Graphic Design & Poetry – Elizabeth Carrington*



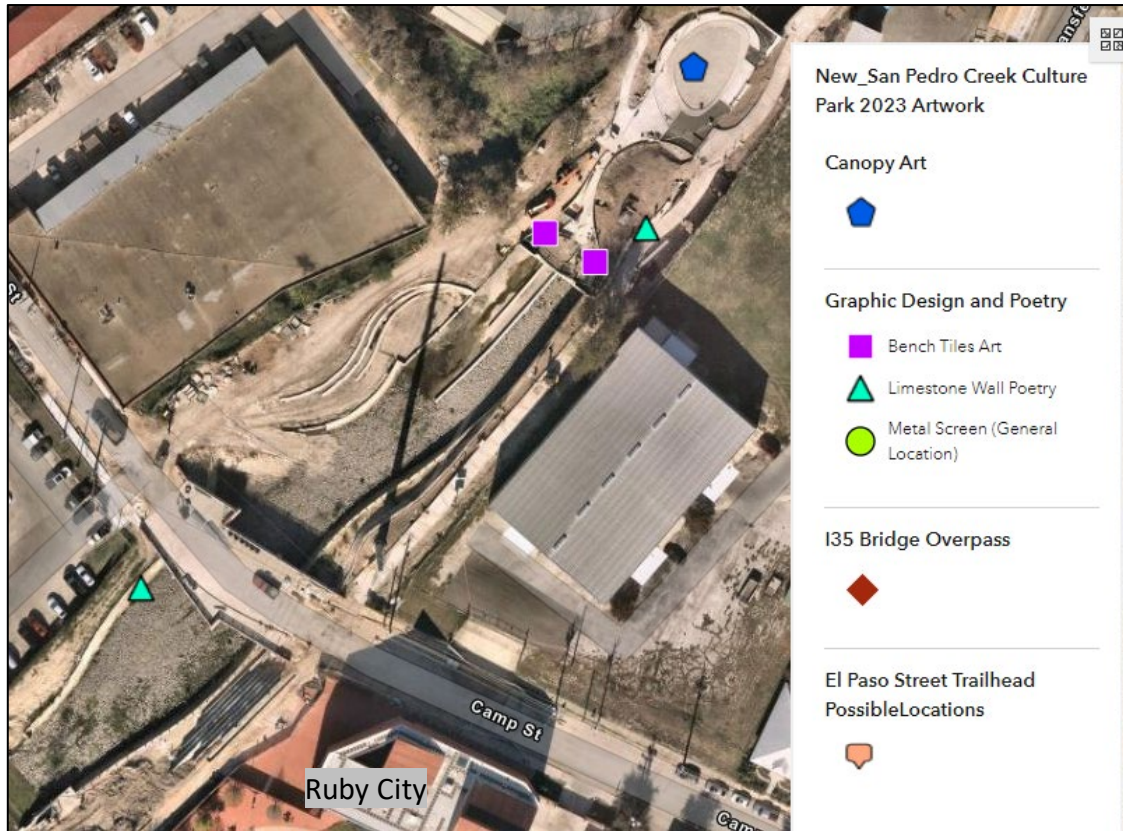


# Graphic Design & Poetry – Elizabeth Carrington



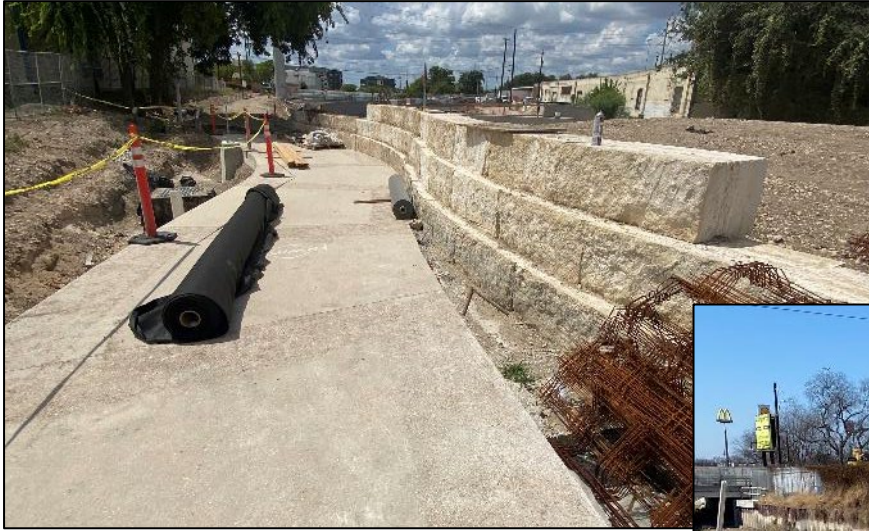


# Poetry, Phase 2 & 3 – Eduardo Vega





# *Poetry, Phase 2 & 3 – Eduardo Vega*



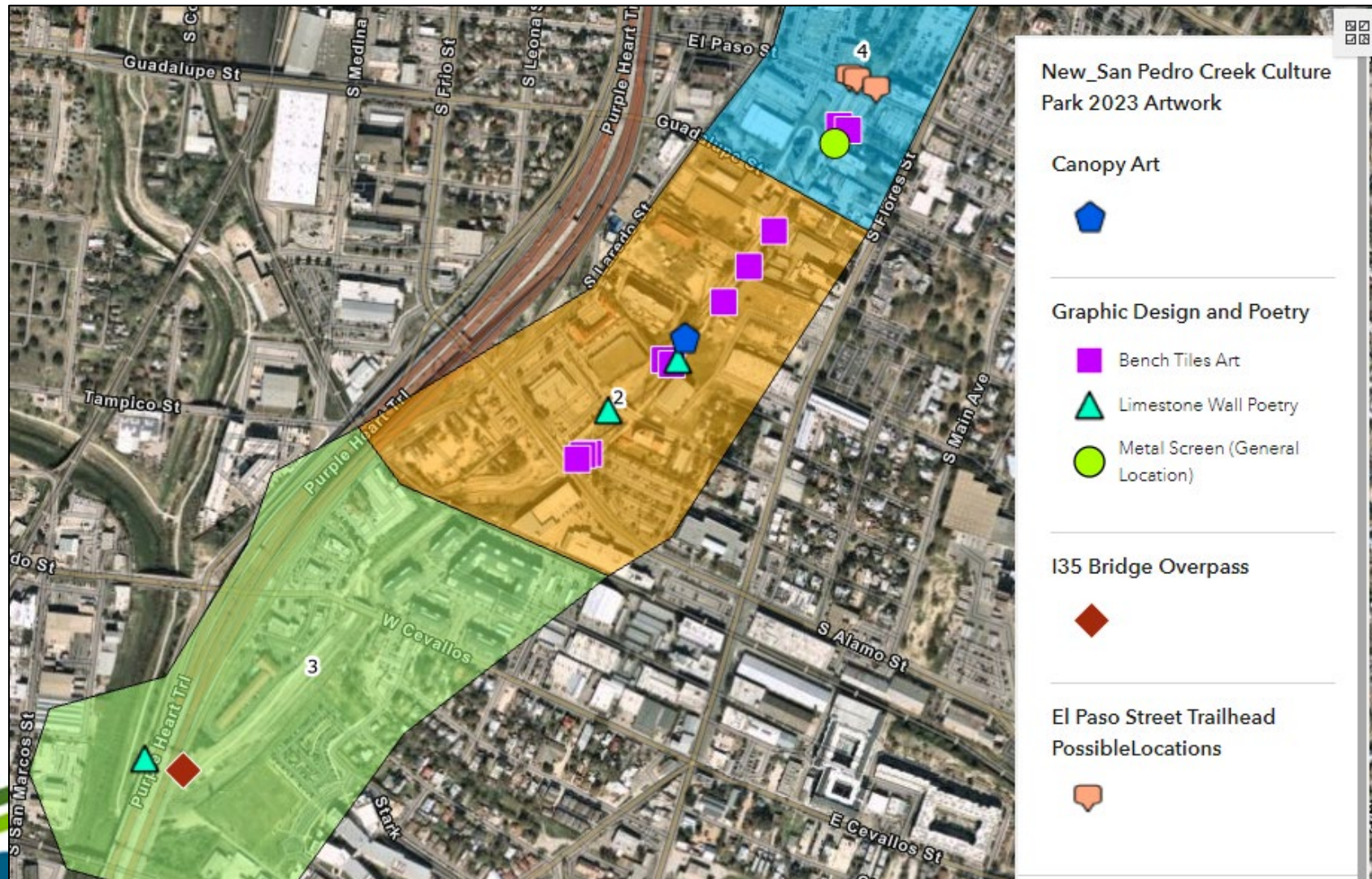
## **3 locations for poetry:**

- Culvert (left image, phase 2)
- Camp Street (right image, phase 2)
- I35 (limestone wall not built yet, phase 3)





# Tiles, Phase 2 & 4 – Leticia Huerta

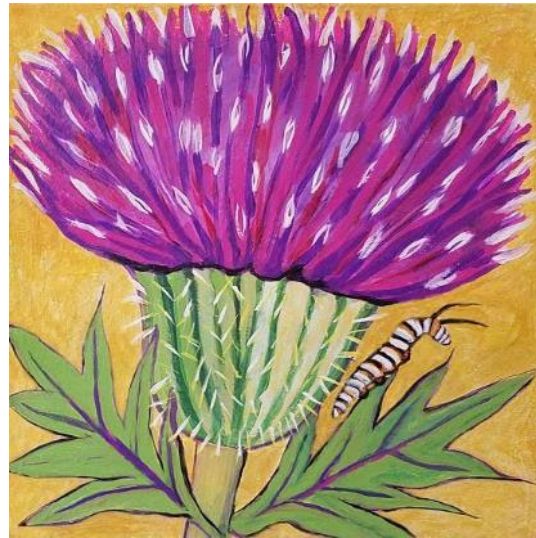




## *Tiles, Phase 2 & 4 – Leticia Huerta*



**Firewheel**



**Texas Thistle**



**Esperanza**



**Celestial Lily**





# Questions



# Events Update

Nicole Marshall







Saturday, April 15<sup>th</sup>





# IPW Conference

- May 21 – 24, 2023
  - Art is Everywhere Press Tour 5/21
    - Travel Memo Magazine - New Zealand  
<https://www.travelmemo.co.nz/memos/20230523.pdf?fbclid=IwAR1cYaeKGeQ08Se60MiPGFk9WY-LgU7p2C6rb0tREHWQlzdWp6TFWe7u598>
  - 4 places to learn about Black heritage in San Antonio
    - Miami Herald – Florida  
<https://www.miamiherald.com/detour/article275886866.html>
    - Raleigh News & Observer - North Carolina
    - The Kansas City Star – Kansas
    - Charlotte Observer – North Carolina
    - Fort Worth Star – Telegram - Texas

Americas – IPW 2023 San Antonio

**Remember The Alamo – a new way to do it**

A new interpretive centre at The Alamo, San Antonio gives visitors deeper insight into the iconic location than has been available in the past and gives clients more reason to dwell at the site.

The Ralston Family Collection Centre, which opened in March, has some 2,000 items on display, a considerable number of them from the collection of former Genesis singer and drummer Phil Collins.

A wall at the front entrance has 100 items and according to senior curator and historian at The Alamo, Ernesto Rodriguez, that is more than the entire number on display at the former makeshift museum.

Even the new facility is a stepping stone to something bigger. Rodriguez says a state of the art museum facility with a theatre, gift shop and other features will be opened in 2026.

Tom Castanos, director of interpretation at The Alamo, says that despite being an iconic attraction in the US – most famous for a siege and a battle in 1836 – to many people it is just a façade to take a picture at.

He points out that the most familiar site, an historic church, was just a small part of the walled compound.

"The new collection is important because we want people to stay and learn the story of what happened here. It doesn't match the drama of the movie but telling the true story is important.

In another development, a reconstruction of The Alamo's South Gate is set to open to the public this week. Some of the first people to see it will be IPW travel trade participants attending the farewell function at The Alamo on Wednesday night (US time).

Tom Castanos, left, telling the true story of The Alamo is important

**TAKE YOUR TRAVEL CAREER TO NEW HEIGHTS**

Want the flexibility of running your own travel business?

Find out what made Travel Managers the right choice for Steve Lawson who has been a member for over 15 years.

**STEVE LAWSON**  
TRAVEL MANAGERS

Travel Managers support have never disappointed. They have always been there as a sounding board for marketing, accounting and supporting me personally and as a broker.

It's great to know that Travel Managers is right behind me, with their wealth of knowledge and many years in the industry from my colleagues. The future of my travel business is exciting. Travel Managers has given me the ability to forge ahead with confidence.

**FIND OUT MORE !!**

Get in touch if you're an experienced agent or current broker looking to take the next step in your travel career.

Katharina Crowle  
National Sales Manager  
katharina.crowle@travelmanagers.co.nz  
(021) 229 5829

**Flash flood alley' rehabilitated as culture park**

San Antonio's San Pedro Creek has been reclaimed as a public culture and art park.

Considered the birthplace of San Antonio, San Pedro Creek was for many years a flood prone waterway, dividing the central city economically into two disparate halves.

It was along this creek that the city was founded by generations of indigenous people and settlers before the waterway was neglected and became infamously known as 'flash flood alley.'

The San Pedro Creek Culture Park is now an ongoing flood control and beautification project that also celebrates the city's people and history through art.

Creek Lines, a stainless steel and polished aluminium sculpture at Plaza de Fundación celebrates the path of the creek while five murals and numerous ceramic tile works commissioned by local artists celebrate the city's people and history.

Jo Lopez, son of migrant workers, based his mural around the bygone glamour of Alameda Theatre which looks down upon his work. Adriana Garcia's mural depicts the moment of contact between the native Coalhuitcan inhabitants and the Spanish.

Adriana Garcia, front of her mural, 'De Todos Caminos Somos Todos Uno,' at San Pedro Creek Culture Park.



# Upcoming Events

- YOGA on the Creek
  - Mondays @ 6pm at the St. James A.M.E.C. Culture Crossing
- Community Drum Circle
  - Tuesday, June 13<sup>th</sup> @ 7pm at Plaza de Fundación at San Pedro Creek
- Phase 2, 3, & 4.1 Grand Opening Update
  - May 2024



# Questions





# Adjourn

**Next Meeting: August 10<sup>th</sup>**

