



**San Pedro Creek Culture Park
Advisory Committee
April 13, 2023**





AGENDA
APRIL 13, 2023
SPCCP ADVISORY COMMITTEE MEETING
SAN ANTONIO RIVER AUTHORITY
9:00 A.M.

1. Welcome and Introductions – Kendall Hayes, SARA (5 minutes)
2. Subcommittee Business (5 minutes)
3. Citizens to be Heard (5 minutes)
4. Approval of the Minutes (2 minutes)
 - a. March 2023
5. Design and Construction Activities – Pablo Garza, SARA (25 minutes)
 - a. Phases 2, 3 & 4.1 Construction Update
 - b. Phase 4.2 Update
6. Public Art – Elizabeth Garcia, SARA (10 minutes)
 - a. Projects Update
7. Events – Nicole Marshall, SARA (10 minutes)
 - a. Upcoming Events
8. Calendar Items
 - a. April 15th – Creekfest
 - b. May 21st – IPW Conference, "Art is Everywhere"
9. Adjourn



Subcommittee Business



Citizens to be Heard



Approval of the Minutes



Construction Updates

Project Engineer - Pablo Garza, PE



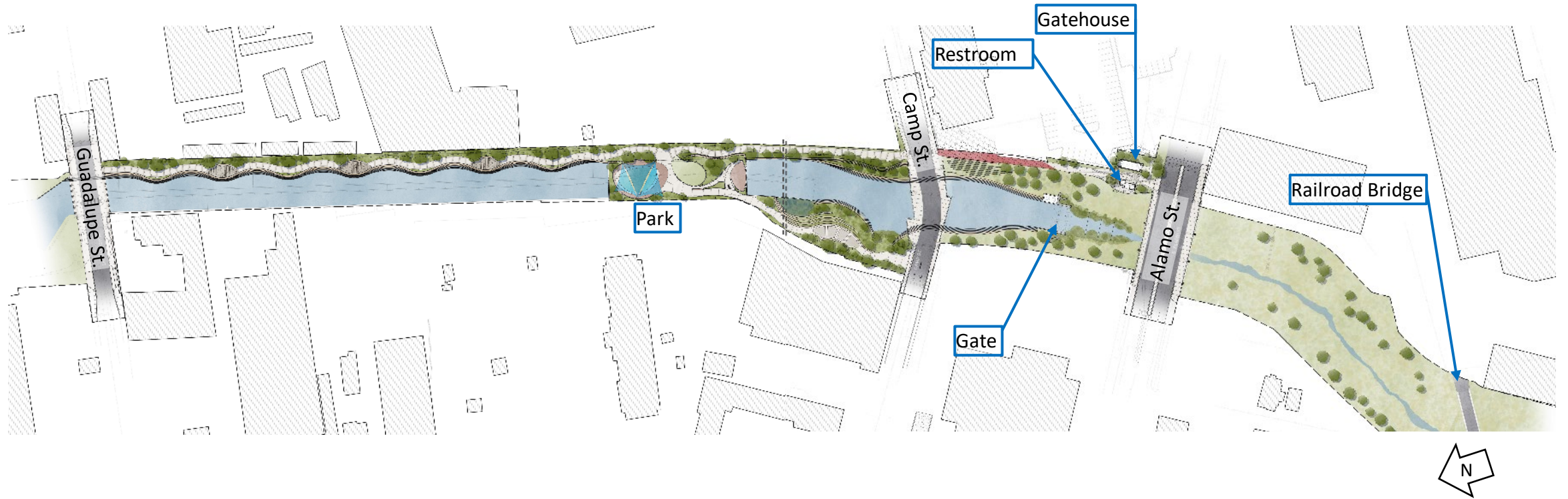
Rain from Heavens

- River Authority staff evaluated options to relocate the waterfall feature to beneath the stainless-steel panels to eliminate constant water flow over the panels. The structural design has been completed and sent to HDR for verification of flows and final design.
- The 90% Design review was completed, and we are working with contractors to obtain accurate cost estimates
- Anticipated construction to start by the end of May or in early June



San Pedro Creek Project: Phase 2

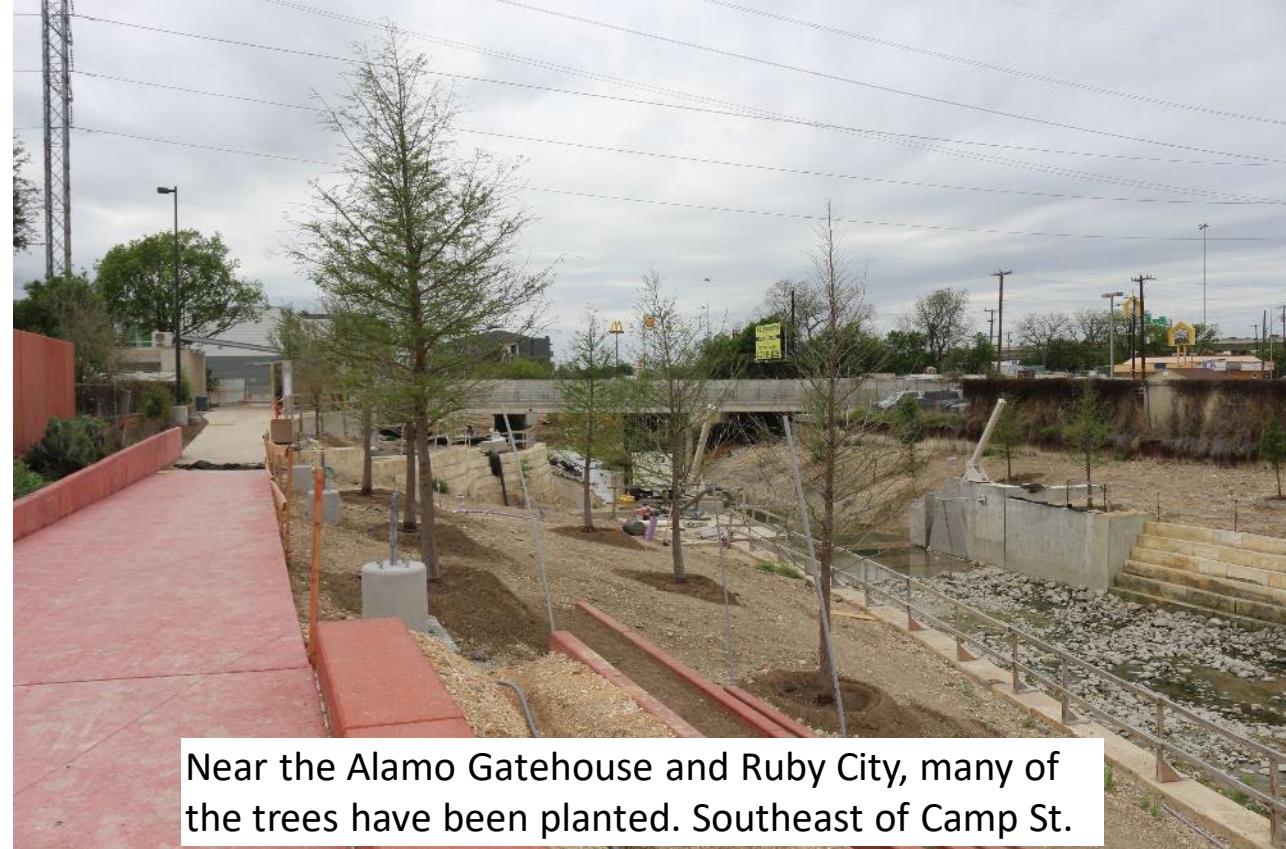
Guadalupe Street to S. Alamo Street



San Pedro Creek Project: Phase 2

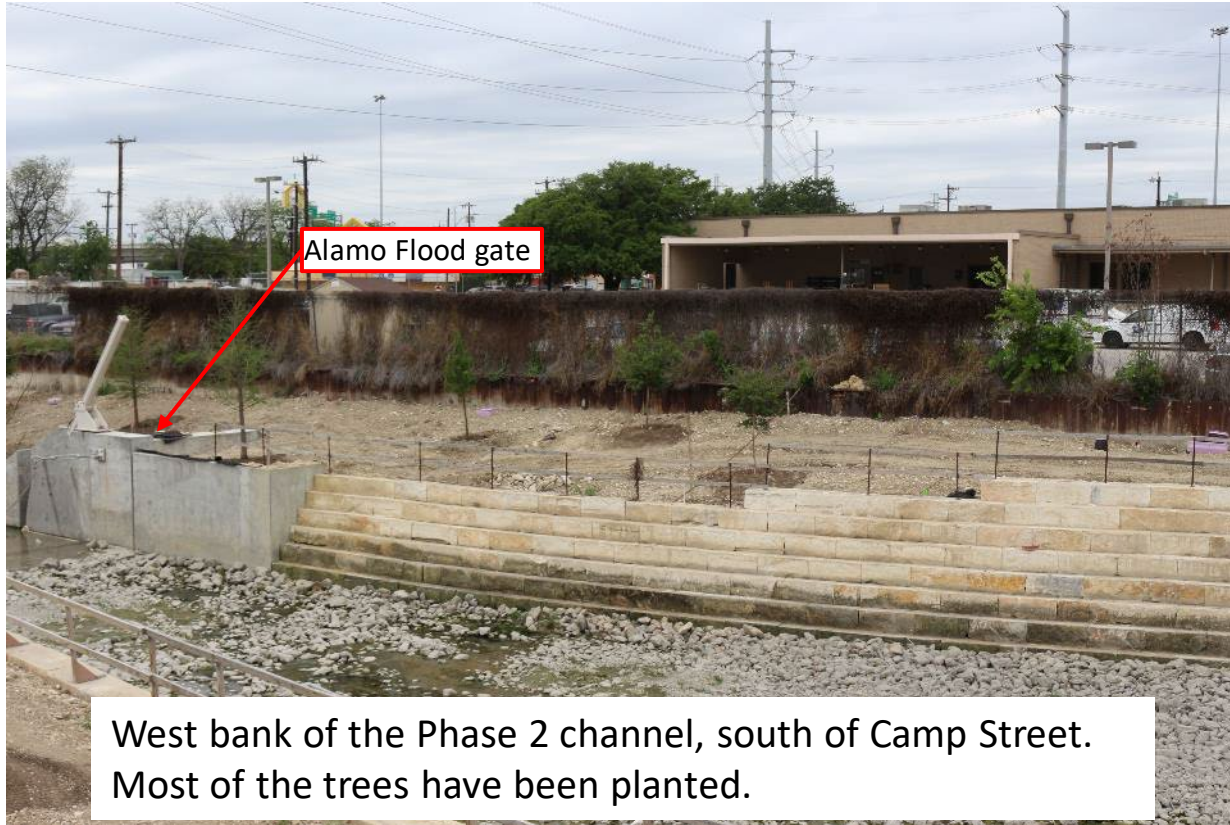
Guadalupe Street to S. Alamo Street

- Alamo gate restrooms and gatehouse are nearing completion.
- Most of the trees have been planted.
- The shade structure and artificial turf are being installed at the park north of Camp Street.
- Some of the plants in the park north of Camp Street have been planted.



San Pedro Creek Project: Phase 2

Guadalupe Street to S. Alamo Street



San Pedro Creek Project: Phase 2

Guadalupe Street to S. Alamo Street



San Pedro Creek Project: Phase 2

Guadalupe Street to S. Alamo Street



A closer view of the artwork on the shade panels.



San Pedro Creek Project: Phase 3

Alamo Street to Confluence w/ Apache Creek



San Pedro Creek Project: Phase 3

Alamo Street to Confluence w/ Apache Creek

- Paseos are being installed on the west bank.
- The riffle pools and stones are completed and are being adjusted for function and aesthetics.
- The storm drain penetrations in the slopes of the creek channel are being completed.



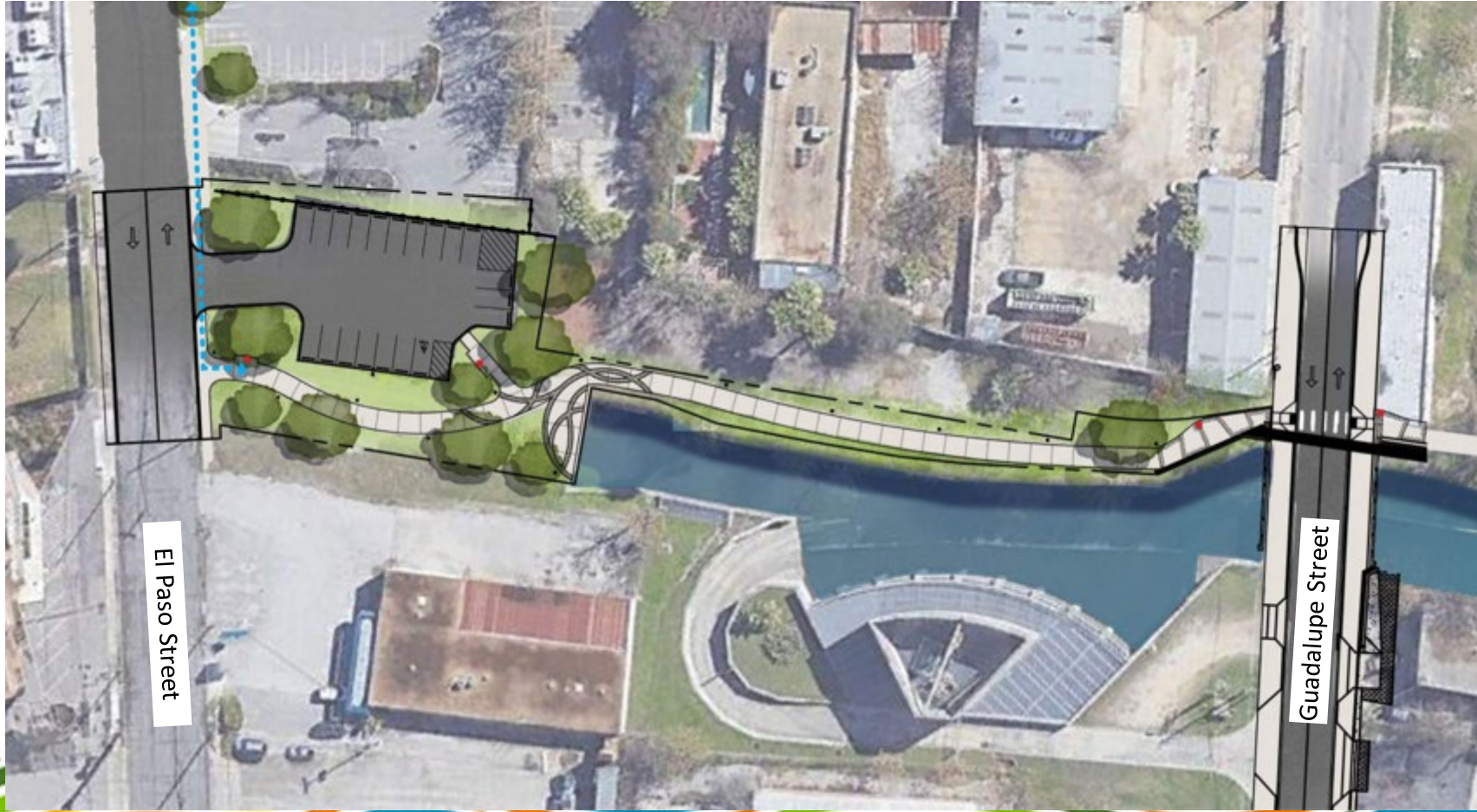
San Pedro Creek Project: Phase 3

Alamo Street to Confluence w/ Apache Creek



San Pedro Creek Project: Phase 4.1

Guadalupe Street to El Paso Street



San Pedro Creek Project: Phase 4.1

Guadalupe Street to El Paso Street

- The area around 4.1 has been fenced and prepped for construction.
- The staging of materials has begun.
- Paseo installation has begun at the Guadalupe (south) end of this phase.



San Pedro Creek Project: Phase 4.1

Guadalupe Street to El Paso Street



A short section of the paseo at Guadalupe Street.



San Pedro Creek Project: Phase 4.2

El Paso Street to Cesar Chavez



Questions



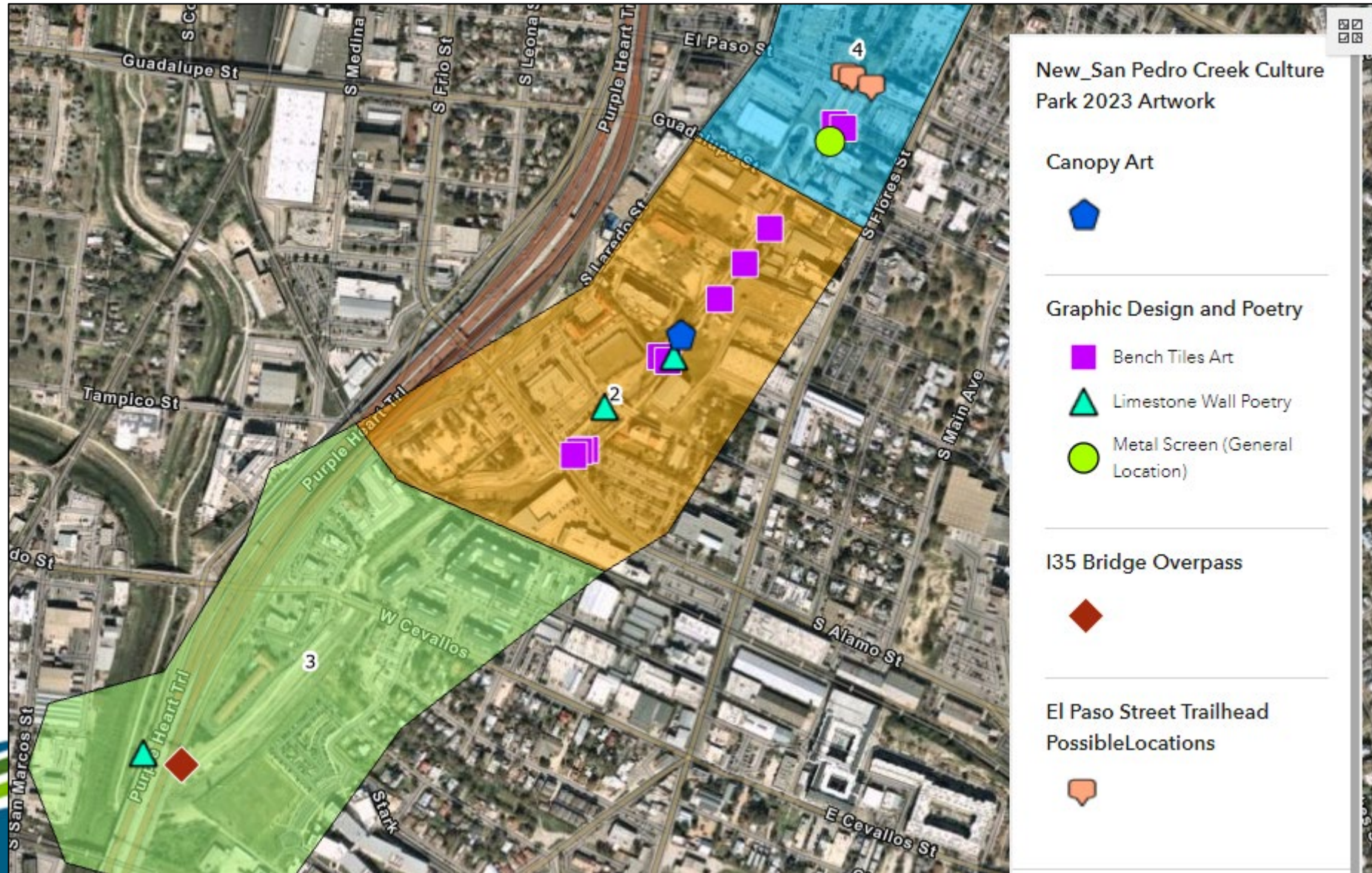
Public Art Update

Elizabeth Garcia

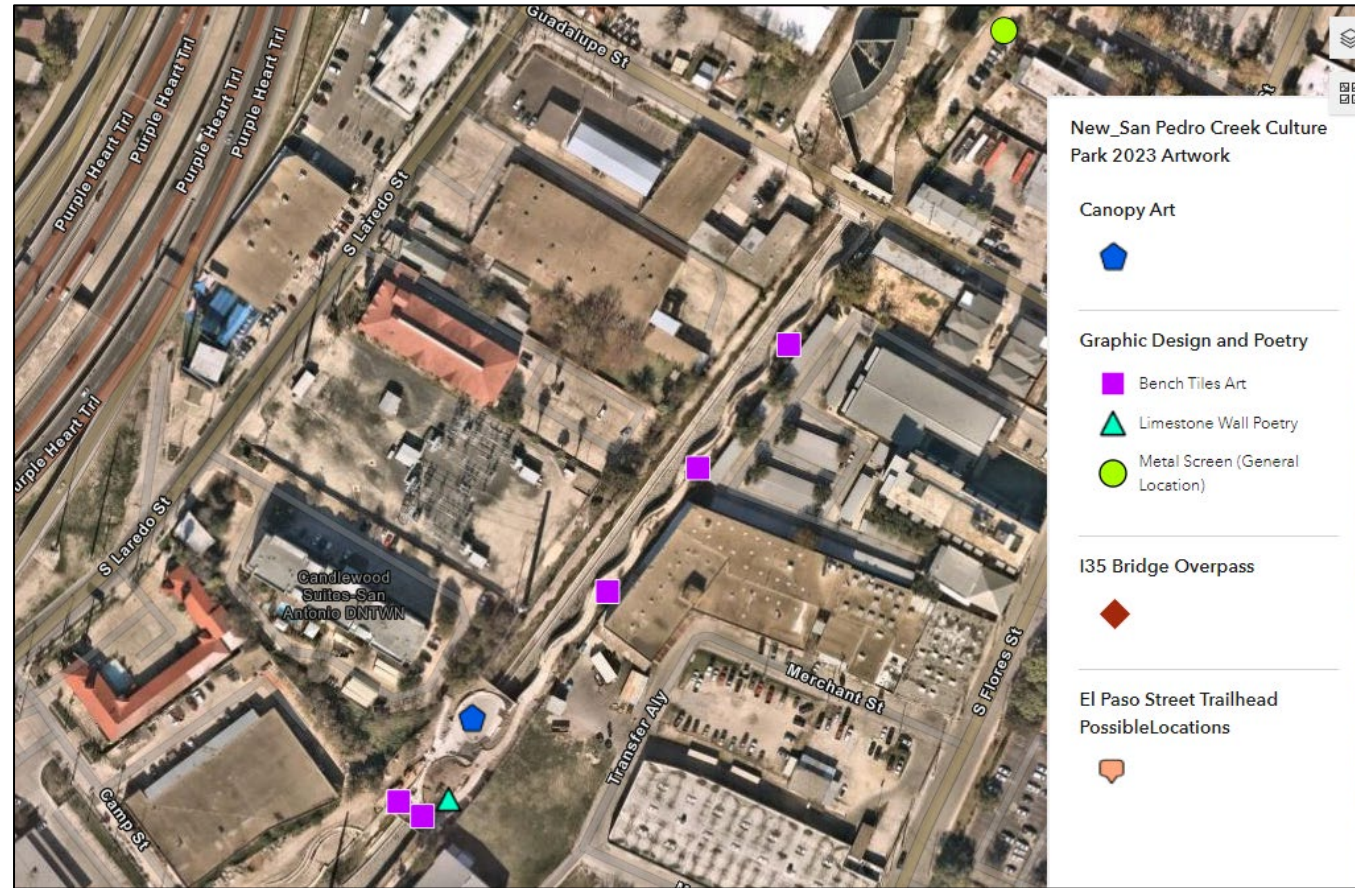
SARA, SPCCP Art Project Manager



Overview



Canopy, Phase 2 – Rikkianne Van Kirk



Canopy, Phase 2 – Rikkianne Van Kirk



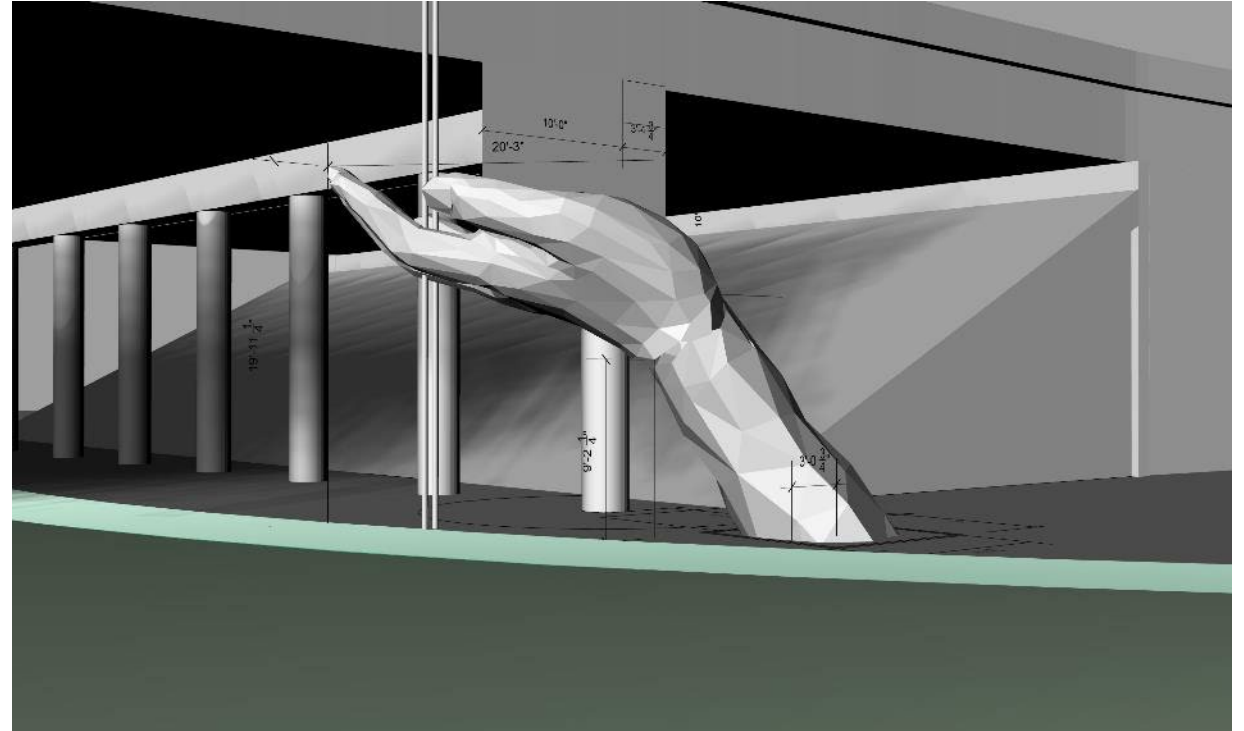
I-35 Bridge Overpass, Phase 3 – Mark Reigelman



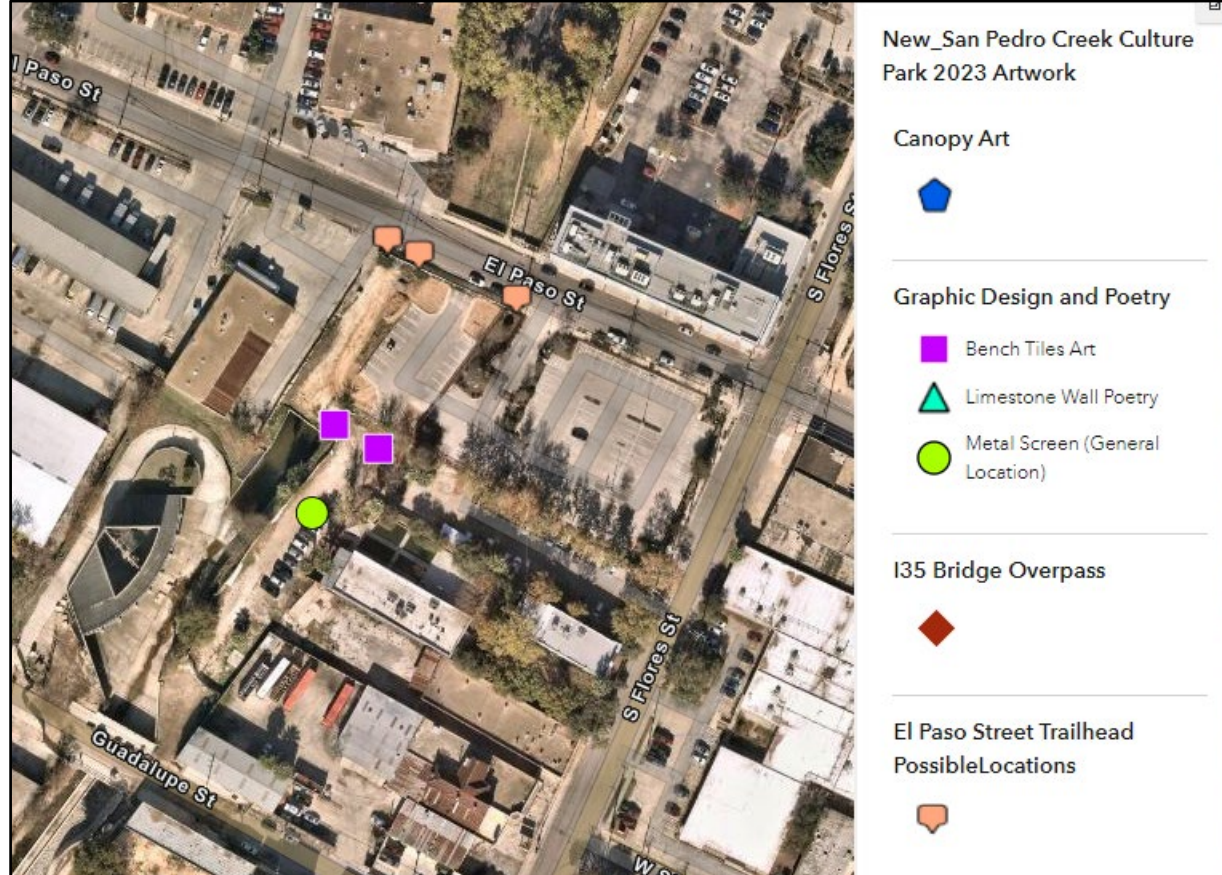
I-35 Bridge Overpass, Phase 3 – Mark Reigelman



Note: Design details are subject to change.



EL Paso Street Trailhead, Phase 4 – Diana Kersey



EL Paso Street Trailhead, Phase 4 – Diana Kersey



**The Guardians Five Point
VIA Metropolitan Transit SA**

**Bridges of Understanding
San Pedro Creek Culture Park**



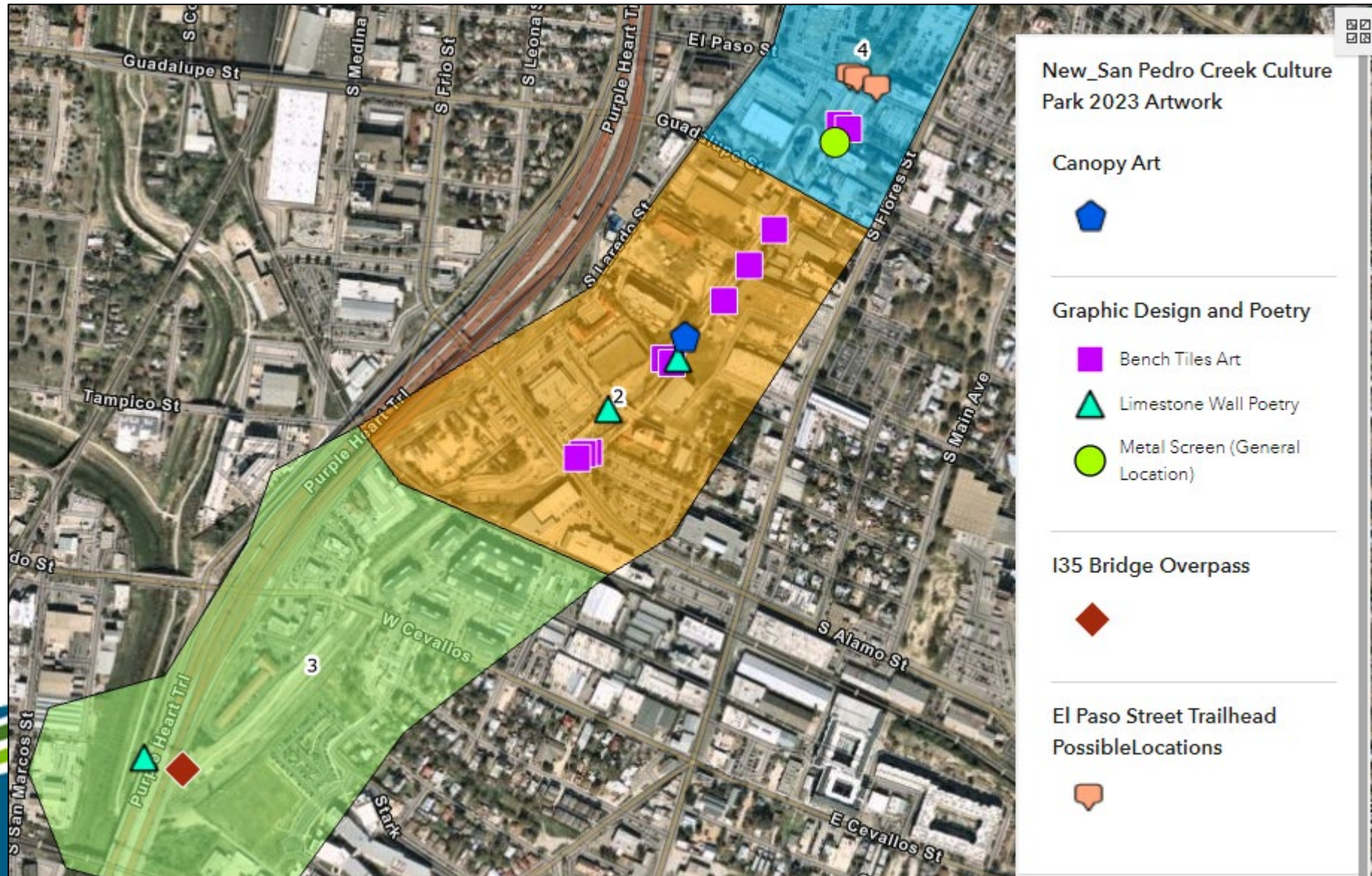
Community Engagement
with artist, Diana Kersey:

When: April 15

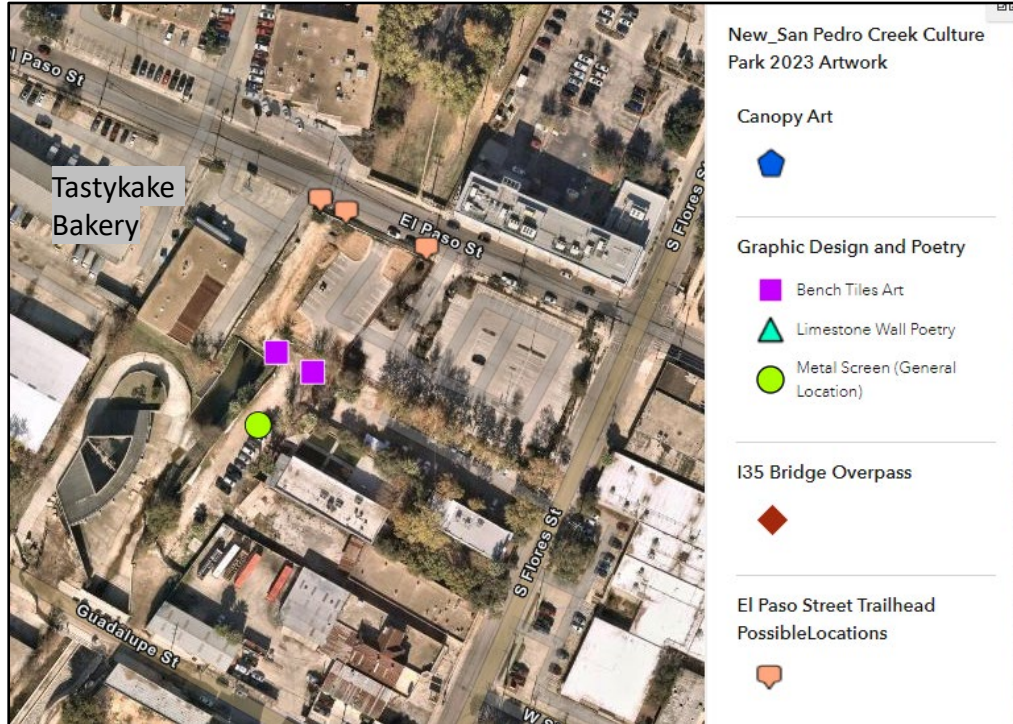
Where: Creek Fest



Graphic Design & Poetry (Tiles, Poetry, Metal Screens)



Metal Screens, Phase 4 – Elizabeth Carrington



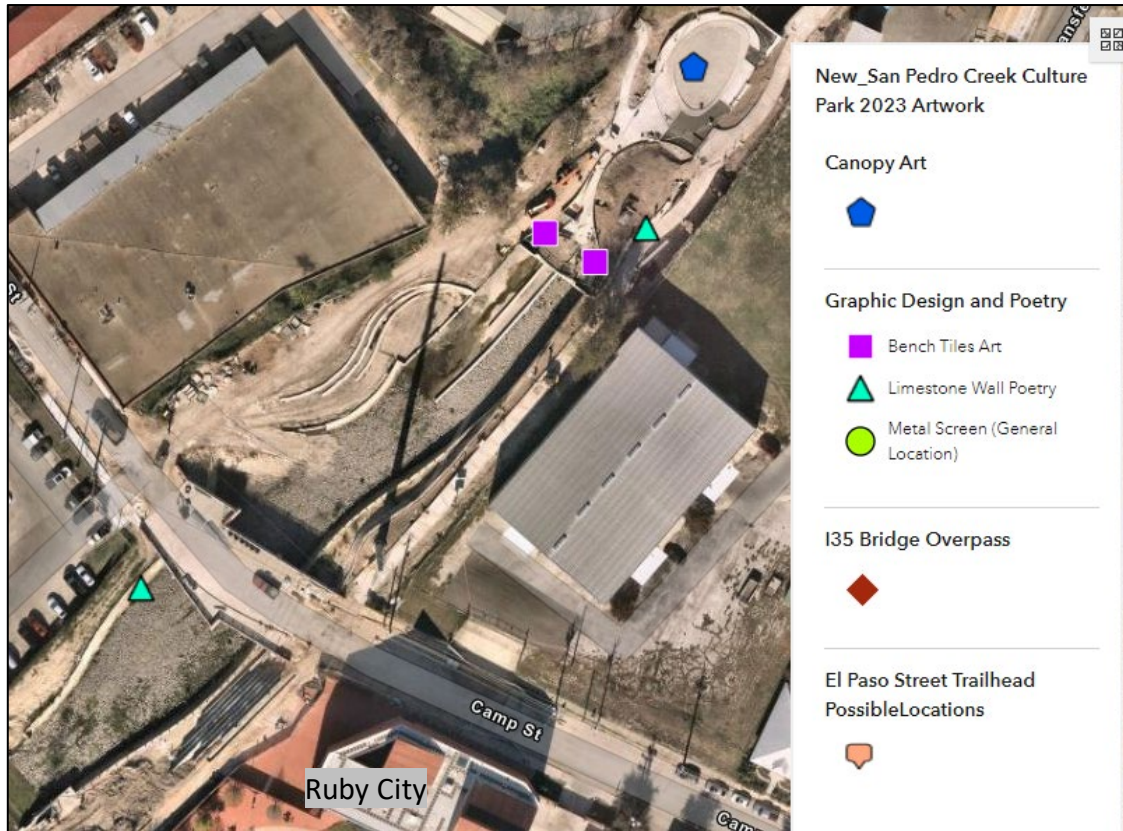
Graphic Design & Poetry – Elizabeth Carrington



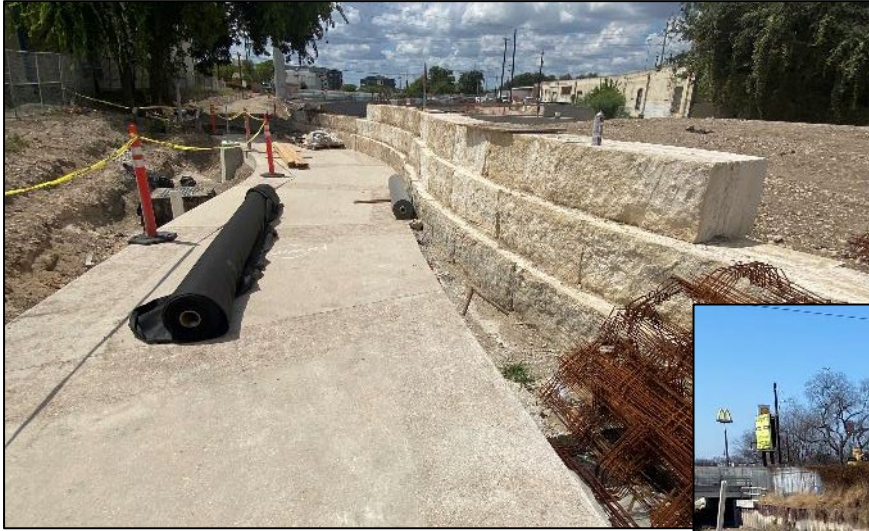
Graphic Design & Poetry – Elizabeth Carrington



Poetry, Phase 2 & 3 – Eduardo Vega



Poetry, Phase 2 & 3 – Eduardo Vega



3 locations for poetry:

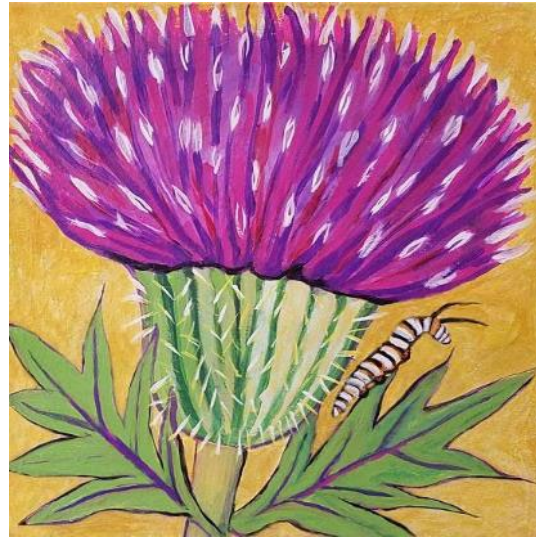
- Culvert (left image, phase 2)
- Camp Street (right image, phase 2)
- I35 (limestone wall not built yet, phase 3)



Tiles, Phase 2 & 4 – Leticia Huerta



Firewheel



Texas Thistle



Esperanza



Celestial Lily



Questions



Events Update

Nicole Marshall



Recent Events

- Art of Four

- Community Paint Day March 25th

- Unveiling Reception April 8th



Upcoming Events

CreekFest

CULTURE COMMUNITY SUSTAINABILITY



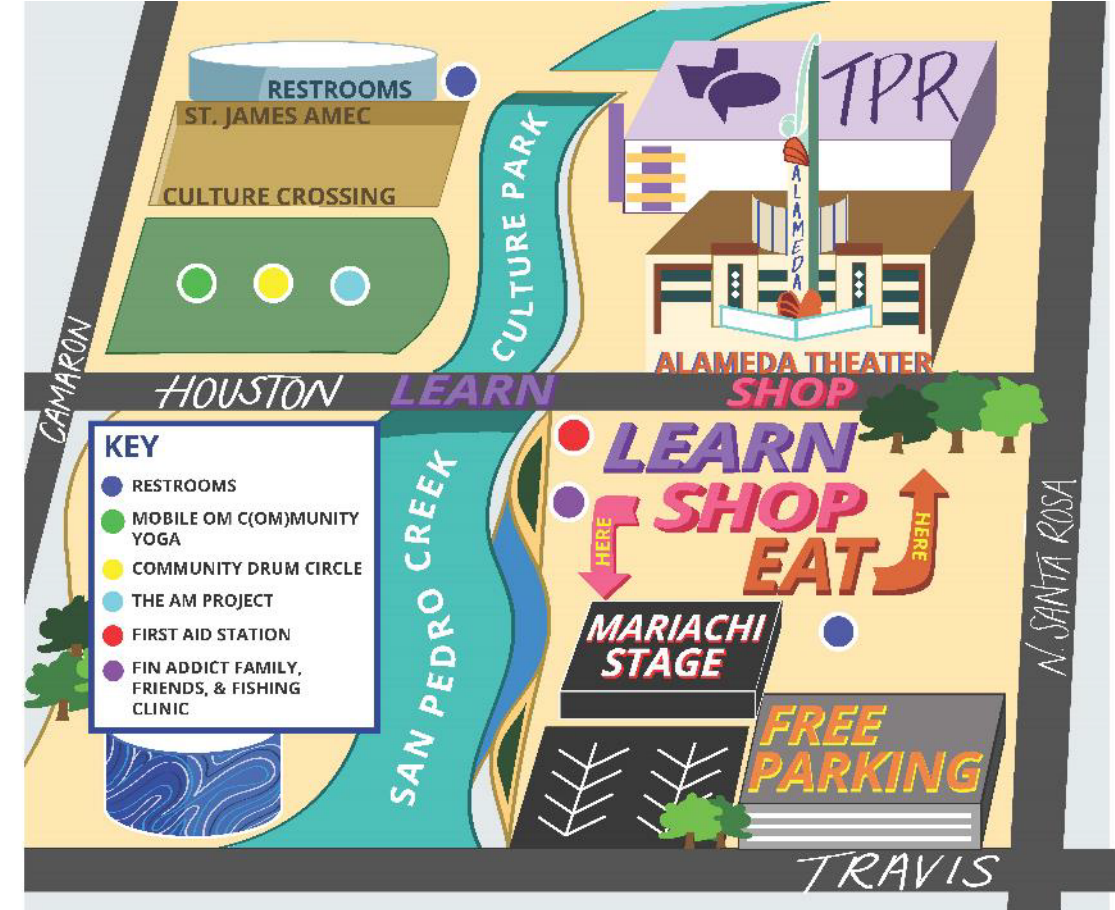
ST. JAMES A.M.E.C. CULTURE CROSSING AREA PROGRAMMING SCHEDULE

- 10:15 AM - 11:15 AM
Mobile OM C(OM)munity Yoga
- 11:30 AM - 12:30 PM
Community Drum Circle
- 12:45 PM - 1:45 PM
The AM Project

*Free Parking Available at the 343
W. Houston St. Garage Parking
Garage.*

MARIACHI STAGE SCHEDULE

- 10:00 AM - 10:20 AM
Seguin High School
- 10:40 AM - 11:00 AM
Rhodes Middle School
- 11:20 AM - 11:40 AM
Resnik Middle School
- 12:00 PM - 12:20 PM *BREAK*
- 12:40 PM - 1:00 PM
Southwest High School
(Mariachi Los Dragones)
- 1:20 PM - 1:40 PM
Southwest Legacy High School



Upcoming Events

- YOGA on the Creek
 - Mondays @ 6pm at the St. James A.M.E.C. Culture Crossing
- Community Drum Circle
 - Tuesday, May 9th @ 7pm at Plaza de Fundación at San Pedro Creek
- IPW Conference
 - Sunday, May 21st “Art is Everywhere” Media Tour



Questions



Adjourn

Next Meeting: May 11th

A construction site tour for committee members will replace monthly briefing at the River Authority office

