





AGENDA
FEB 10, 2022
SPCCP SUBCOMMITTEE MEETING
VIRTUAL GoToMEETING
9:00 A.M.

1. Welcome and Introductions – Monica Trevino-Ortega, SARA (5 minutes)
2. Subcommittee Business (5 minutes)
 - a. Minutes Discussion
3. Citizens to be Heard (5 minutes)
4. Westside Creeks Funding Update – Brian Mast, SARA (7 minutes)
5. Public Art – Carrie Brown, SARA (15 minutes)
 - a. Project Update
 - b. Events Update
6. Design and Construction Activity – Christine Clayton, SARA (25 minutes)
 - a. Phases 1.2, 1.3, & 2 Construction Update
 - b. Phases 3 & 4 Design
7. Calendar Items
 - a. Feb 14, 21, 28 – Yoga on the Creek
 - b. Feb 15 – WCROC Meeting
 - c. Feb 19 – Fit & Flow Mental Health Workshop
 - d. March 4-8 – Creekside Chats SPC Construction Update
 - e. March 10 – SPCCP Subcommittee Meeting
8. Adjourn

Subcommittee Business



Citizens to be Heard



Westside Creeks Funding Update

Brian Mast

SARA, Government Affairs Manager



Public Art

Carrie Brown
SARA, Public Art Curator



QUESTIONS



Design & Construction Activity

Christine Clayton

SARA, Project Manager

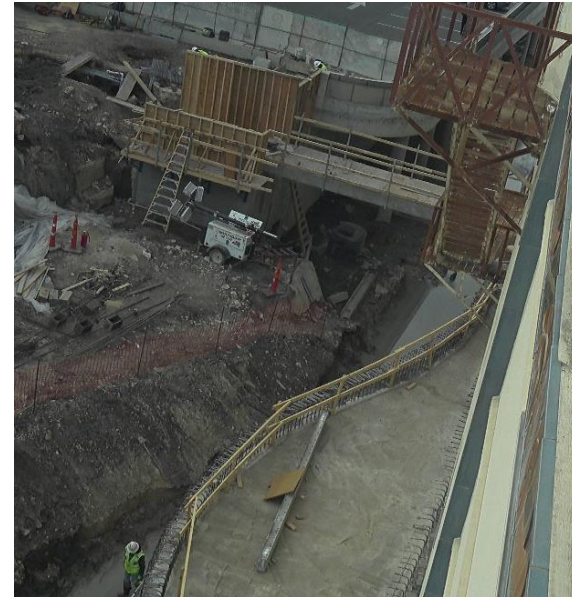


Houston Street to Nueva Street



Phase 1.2 Construction

- Poured pedestrian bridge between Alameda Theatre and AME site
- Upcoming pour of paseo adjacent to Alameda Theatre
- Took 3D LiDAR scan of AME foundations





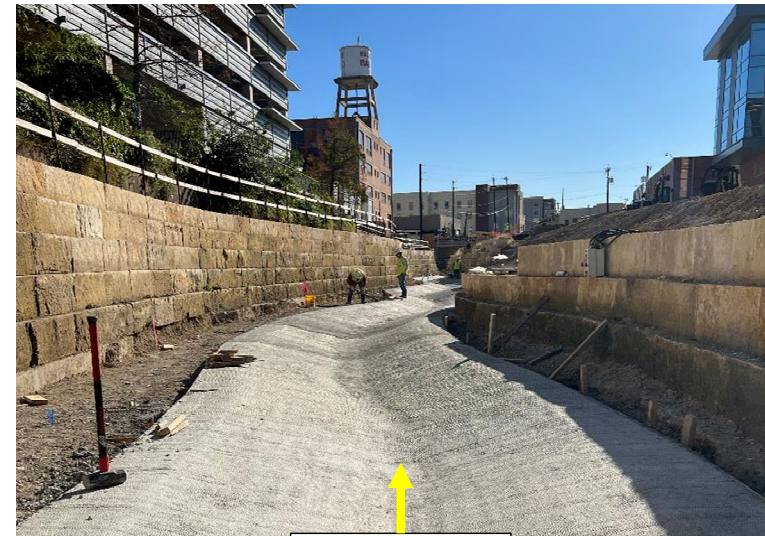
Nueva Street to C. Chavez Blvd
Guadalupe Street to S. Alamo Street



Phase 1.3 Construction

Nueva to Cesar Chavez

- Installing subsurface structural support for Nueva bridge
- Poured concrete pilot channel, placing boulders in pilot channel
- Ongoing installation of stone block structural walls along west bank
- Pouring high paseo between Graham and Cesar Chavez



concrete pilot channel



Phase 1.3 Construction

Bioretention pond



Boulders in
concrete pilot
channel

Stone
structural
support walls



Phase 2 Construction

Guadalupe to Camp

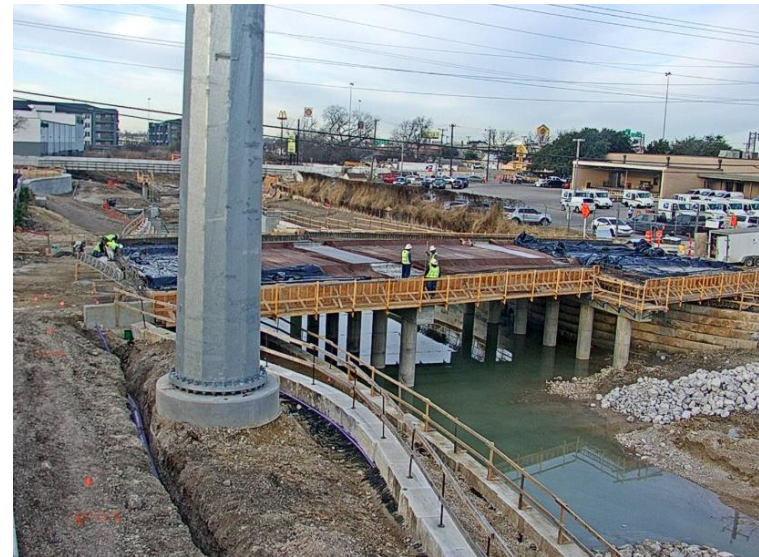
- Ongoing installation of subsurface structural support for Guadalupe bridge
- Beginning install of Guadalupe storm sewer
- Ongoing installation of electrical and irrigation lines
- Placing cobble in channel



Phase 2 Construction

Camp to Alamo

- Camp bridge deck poured
- Beginning installation of water line across Camp bridge
- Ongoing installation of subsurface structural support for northern half of Alamo bridge



San Pedro Creek Project: Phase 3 & 4

*Railroad Bridge to Confluence w/ Apache Creek
C. Chavez Blvd to Guadalupe Street*



Phase 3 Construction

- Construction began in January
- Working on clearing vegetation and installing construction access ramps into channel
- Flaggers on Cevallos for temporary traffic stops



QUESTIONS



Calendar Items



Feb 14, 21, 28
Monday Night Yoga



Feb 15
WCROC Meeting



Feb 8
Fit & Flow Mental Health Workshop



Calendar Items



March 4-8

Creekside Chats – SPC Construction Update



March 10

SPC Subcommittee Meeting



Adjourn

