




1



**AGENDA**  
**JUNE 11, 2020**  
**SPCCP SUBCOMMITTEE MEETING**  
**VIRTUAL GoToMEETING**  
**9:00 A.M.**

1. Welcome and Introductions - Jerry Geyer, Chair
2. Approval of the Minutes
3. Subcommittee Business (10 minutes)
4. Operations & Maintenance – Kristen Hansen, SARA (10 minutes)
  - a. Rains from the Heavens Coating
5. Design and Construction Activity – Kerry Averyt, SARA (20 minutes)
  - a. Phase 1.2 Construction
  - b. Phase 1.3 and Phase 2 Construction
6. AME Church Archaeological Site – Kerry Averyt, SARA (10 minutes)
7. Art – Carrie Brown, SARA (15 minutes)
  - a. 5 Panel Mural
  - b. Programming
8. Communications - Monica Trevino-Ortega, SARA (5 minutes)
  - a. Street Closure Outreach
  - b. Interpretive Plan and Interpretive Panels
9. Calendar Items
  - a. June 15, 22 - Yoga on SPCCP
  - b. June 15 - Five Panel Mural Virtual Office Hours
  - c. June 18 - Five Panel Mural Virtual Office Hours
  - d. July 9 - SPCCP Subcommittee Virtual Meeting
10. Comments from the Public (5 minutes)
11. Adjourn

2

# Operations & Maintenance

**Kristen Hansen**

SARA, Watershed & Park Operations Department Manager



3

# Operations and Maintenance

- Rains from the Heavens update
- Mannatial basin de-silting



4

# Rains From the Heavens

- Coating began May 2020 and will be complete June 26<sup>th</sup>.



5



6



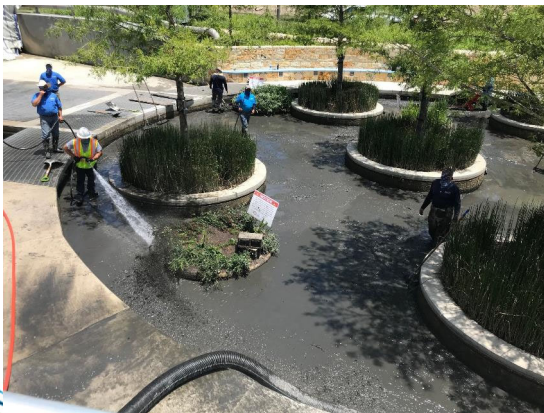
## Mannatial Basin De-Silting

- The Rains from the Heavens had to be turned off for the duration of the coating.
- SARA staff took this opportunity to de-silt the basin area.



7

## Assistance from Transportation and Capital Improvement



8



9

# QUESTIONS?



10

# Design and Construction Activity

**Kerry Averyt**  
SARA, Project Engineer



11

## Updates

- Phase 1.2
  - Construction activities
  - Archaeological exploration
- Phases 1.3 and 2
  - Design Activities
  - Construction activities
- Partner Coordination



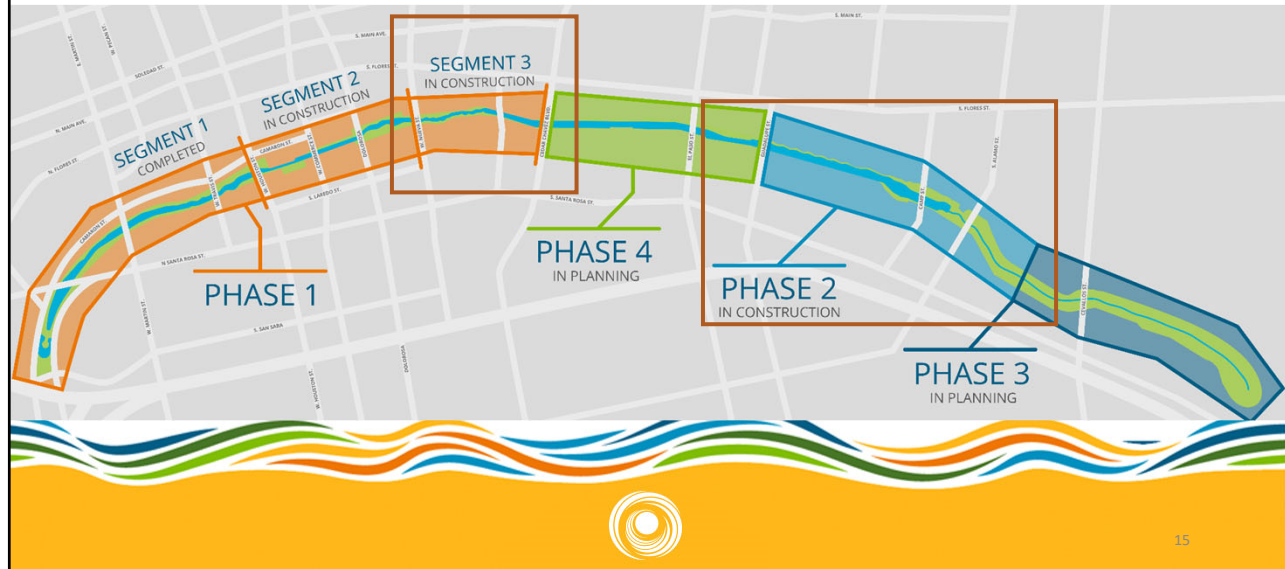
12

12





## Phase 1.3 and Phase 2 Design



15

## Phase 1.3 and Phase 2 Design

- Design ongoing
- 100% design submittal July 2020



16





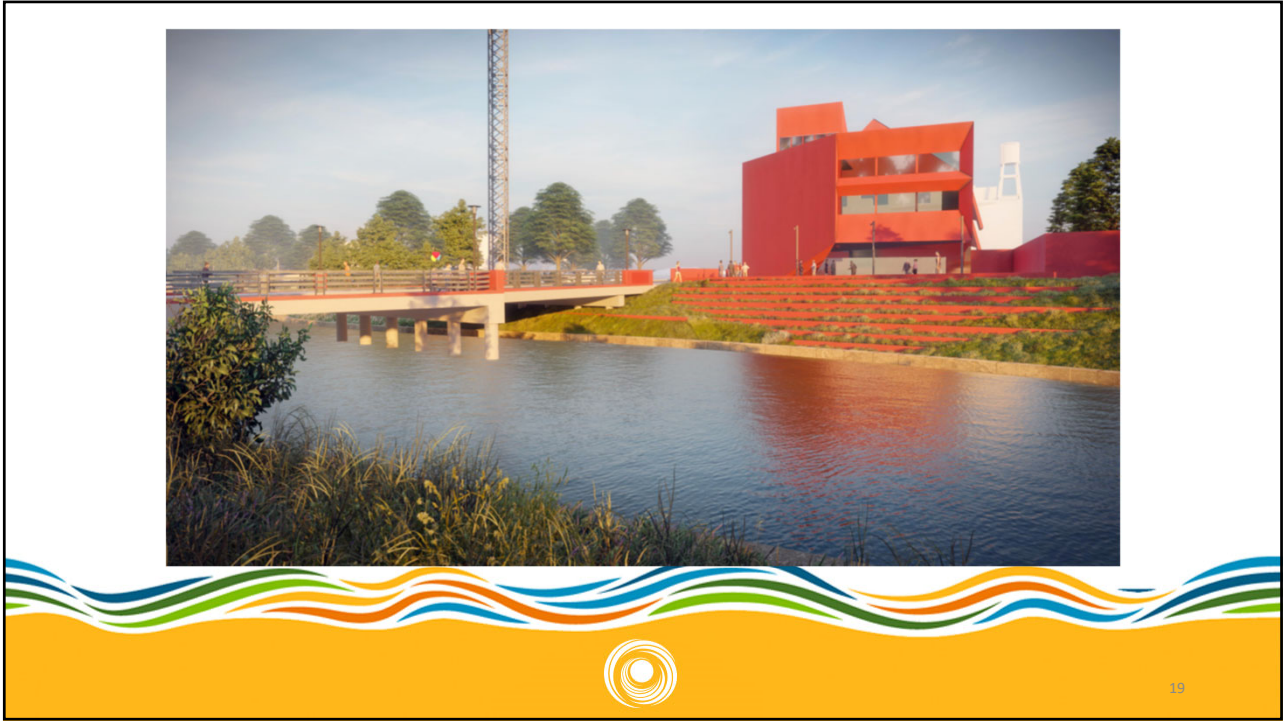
17

17



18

18



19



20





21

21

## Phase 1.3 and Phase 2 Construction

- Phase 1.3 Drilled shaft installation ongoing
- Phase 2 ROW prep underway
- Utility relocation coordination ongoing



22

22



## Phase 1.3 and Phase 2 Construction

- Street closures:
  - Nueva: June 22
  - Graham: Closed
  - Camp Street: Closed
  - Guadalupe: Early July
  - Alamo: mid - July
- Substantial Completion: February 2023



23

## Partner Coordination

- Phases 1 and 2 Coordination ongoing
  - TPR/Alameda
  - Camaron Street
  - Commerce Street
  - GSA/Federal Courthouse
  - TxDOT
  - Linda Pace Foundation/Ruby City
  - UTSA downtown campus expansion
  - SAISD Administration building
  - HEB



24

## Partner Coordination

- Executive Committee
  - David Smith, County Manager, Bexar County
  - Lori Houston, Assistant City Manager, City of San Antonio
  - Razi Hosseini, Director, Public Works, City of San Antonio
  - Suzanne Scott, General Manager, San Antonio River Authority
- Meeting: Next meeting TBD



25

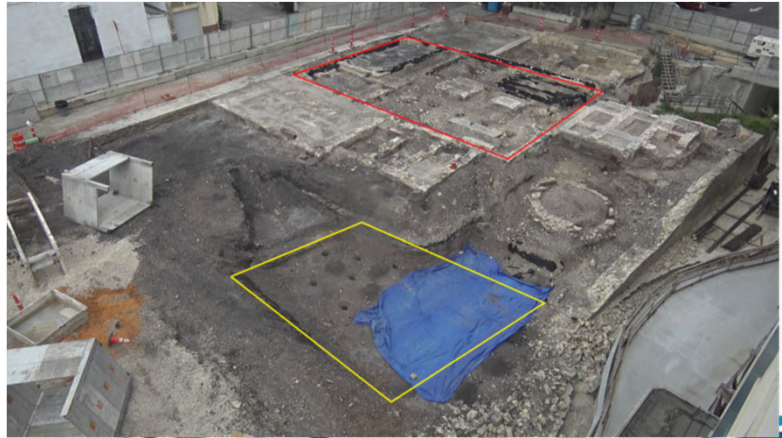
## QUESTIONS & COMMENTS



26

## Archaeological Exploration

- Coordination with USACE, THC and COSA OHP ongoing
- Next step is to determine eligibility for NHRP



27

27

## Art

**Carrie Brown**  
SARA, Public Art Curator



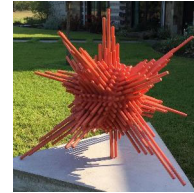
28



## PHASE 1.2: Five Panel Mural

### Artist Team:

Carlos Cortes + Fernando  
Andrade, Rolando Briseno,  
Jenelle Esparza, and Ernesto  
Ibanez



29

## PHASE 1.2: Five Panel Mural

### Virtual Community Outreach

- Focus Groups – May 27 & 28
- Office Hours:
  - **June 15, 12:00 – 1:30 pm**
  - **June 18, 5:00 – 6:30 pm**
- Online comment form through June 30
- Design complete in July



30

## EVENTS & PROGRAMMING

- Virtual offerings
  - Yoga (Mondays at 6:00 pm, June – September)
  - Drum Circle (May 20 & August 11)
- New Series Launch
  - Get Fit – features various types of fitness classes
  - Get Creative – hands-on art-making classes
  - Creekside Chats – educational lectures featuring art, nature and culture



View videos at: [www.facebook.com/SanPedroCreek](https://www.facebook.com/SanPedroCreek)

31

## EVENTS & PROGRAMMING

- Texas Fashion Week – October 10
  - Working with event organizer to develop alternate plans
- Illume: Making Spirits Bright – December 12
  - Event set up, crowd control, and virtual options



32

# Communications

**Monica Trevino-Ortega**

SARA, Public Relations



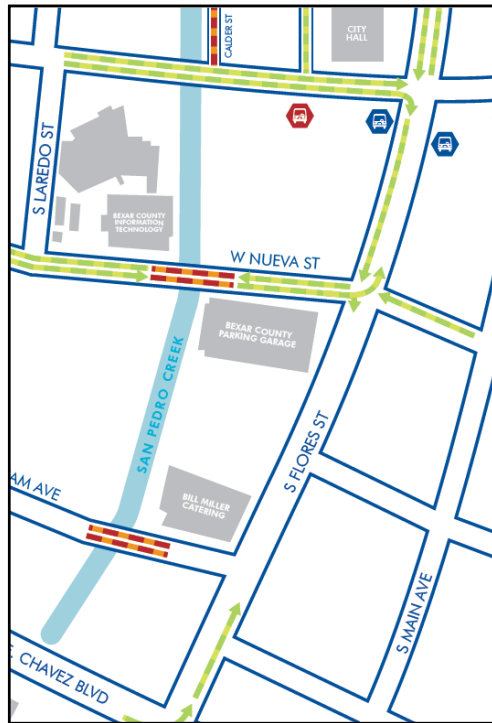
33

## Street Closure Updates



34





## Nueva Street:

Full Closure:  
Week of June 22, 2020 - early 2023

- Access to Flores Street will be from C. Chavez, Dolorosa, and Commerce Streets.
- Pedestrian access across Nueva Street will remain open.
- The first floor entrance and exit of the Bexar County garage have been modified, with traffic exiting onto Flores Street.

35

## Street Closure Coordination



### 8+ weeks out

Coordination with City/County partnerships

Eblast communication – weekly newsletter

Updates Available on website



### 5 weeks out

Called/emailed surrounding businesses

Dedicated street closure eblast

Social media sharing



### 4 weeks out

Post on NextDoor App

Sent information to community partners for sharing



### 3 weeks out

Mailing/emailing flyers to surrounding businesses

Social media sharing



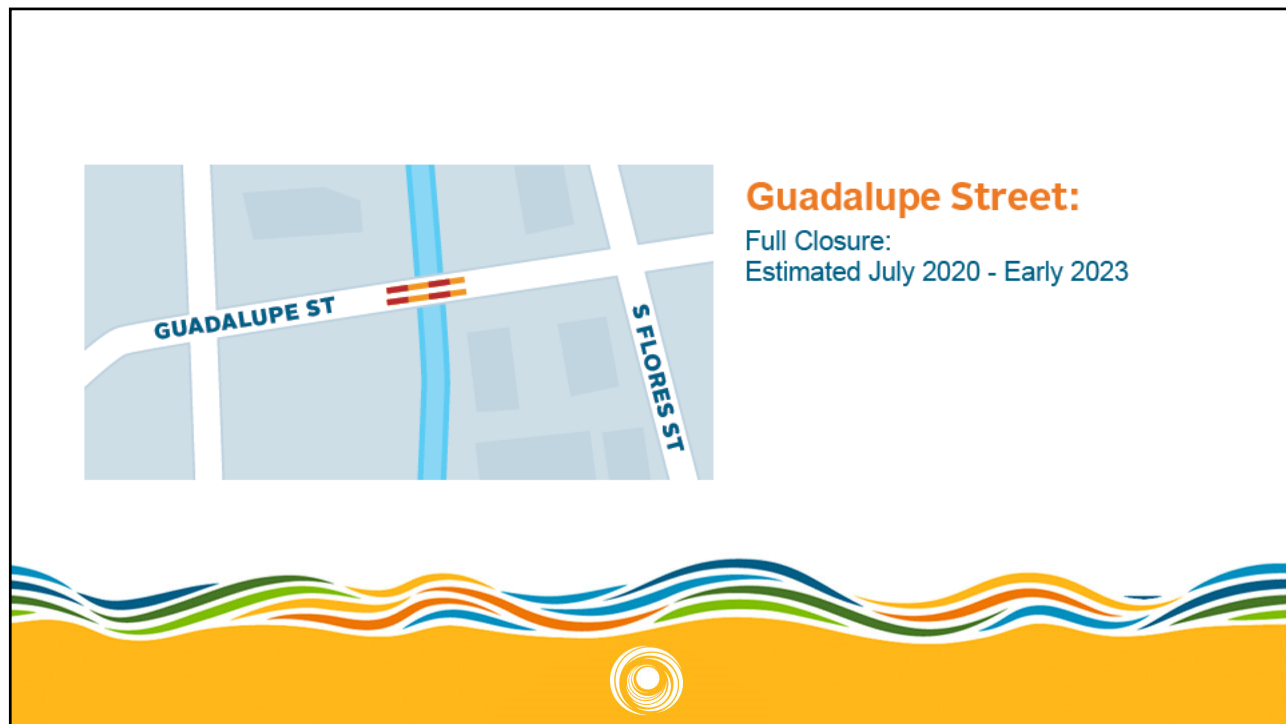
### 2 weeks out

Media advisory

Reminder email to all businesses

Reminder post on NextDoor app

36



37

## SAN PEDRO CREEK CULTURE PARK

### Interpretive Plan



Completed (Phase 1.1); In construction (Phase 1.2); In design (Phase 1.3) (by ToxeyMcMillan Design Associates)

**TOXEY-MCMILLAN DESIGN ASSOCIATES-LLC**  
218 Washington Street, San Antonio, TX 78204 • VM: 210-225-7066 • C: 817-366-7487  
<http://www.tmdaarchitects.com> • [anne@toxeylltmdaarchitects.com](mailto:anne@toxeylltmdaarchitects.com)



## Interpretive Plan

### Consultant - Toxey McMillan Design Associates

- Incorporate existing interpretive efforts
- Provide topics for interpretive panel content
- Provide a comprehensive interpretive plan for Phase 1.2 through Phase 4 applying the story of the creek as it relates to the urban and cultural history of the region.

### Historians

Maria Pfeiffer

David Haynes

Panel content curation

38

# Interpretive Plan Committee

- Sullora Alcaez, Zona Cultural
- Dan Arellano, Historian and Bexar County Historical Commission
- Betty Bueche, Bexar County
- Jerry Geyer, San Pedro Creek Subcommittee
- Claudia Guerra, San Antonio Office of Preservation
- David Haynes, Historian
- Kay Hindes, San Antonio Office of Preservation
- Mickey Killian, Bexar County Historical Commission
- Michael W. Lackey, SARA board member
- Dr. Carey Latimore, Trinity University
- Jimmy LeFlore, San Antonio Office of Public Art
- **Clinton McKenzie, UTSA Center for Archaeological Research**
- Jo Anne Gonzalez Murphy, 1718 San Antonio Founding Families and Descendants
- Maria Pfeiffer, Historian
- **Jesus "Corky" Rubio, Los Bexareños and Bexar County Historical Commission**
- John Phillip Santos, artist and historian
- Mari Tamez, Canary Island Descendants
- Stella Tenorio-De La Garza, San Antonio Conservation Society
- Tomas Ybarra-Frausto, historian
- Belinda Gavallos, Casa Navarro
- Steve Tillotson, Munoc & Co.

39

## San Pedro Creek: A Crossroads of Cultures



Indigenous people hunted, fished, and camped along arroyos streams for thousands of years before Spanish explorers arrived in the late 1500s. Camp of the Lipan depicts a similar scene outside of San Antonio in the late 16th century.

From its earliest encounters between people of all nations, Bexar became a mestizo community, a place where our humanity was transformed.

GEOLOGICAL TIME Dwarfs human time, but the two are closely intertwined. For millennia San Pedro Springs have risen to the surface from a deep, purifying underground aquifer. These abundant waters once formed a springy Bexar creek that sustained myriad indigenous peoples for 12,000 years before the Spanish arrived to establish a permanent settlement here in 1718. Following the settlement of families from Spain's Canary Islands in 1731, land along San Pedro Creek was apportioned among them by royal land grants for farming and collective grazing. Gradually a community of Spanish soldiers, artisans, indigenous, and diverse frontier residents developed along the creek. These early settlers would be joined, beginning in the 1820s, by colonists from the United States and Europe who came seeking land and opportunity in Texas, then still part of Mexico. The influx of new residents accelerated after Texas became an independent republic in 1845 and a state in 1846.

San Antonio became a frontier community of many nations where Native Americans, Mexicans, Germans, French, Irish, Lebanese, Italians, and African Americans lived and worked side by side. Many of these communities mixed with others, and San Antonio became increasingly mestizo. But as other ethnic divides widened, San Pedro Creek would eventually become a boundary line between the emerging city's Anglo and Mexican enclaves. The neighborhood here on the creek's upper reach was home to many Italian immigrants who sold produce and other traditional specialties at the nearby municipal market. Members of this ethnic community traced the Christopher Columbus Italian Society to 1890 and built San Francisco de Paula Church and the adjoining parish hall in 1927. Though much of this neighborhood was demolished when expressways were constructed beginning in the 1940s, this area along San Pedro Creek is considered to be the center of San Antonio's Italian community.



1897 Italian House in San Antonio, Texas (San Antonio, Texas)



Italian House in San Antonio, Texas (San Antonio, Texas)



Italian House in San Antonio, Texas (San Antonio, Texas)

## San Pedro Creek: A Crossroads of Cultures

Arroyo San Pedro: Un Cruce de Culturas



San Antonio artist Theodore Gerdts depicted indigenous people as they might have hunted, fished, and camped along San Pedro Creek before the Spanish arrived. (San Antonio, Texas)

From its earliest encounters between people of all nations, Bexar became a mestizo community, a place where our humanity was transformed.

San Pedro Creek, formed by springs rising from a deep underground aquifer, sustained indigenous people for 12,000 years before a permanent Spanish settlement was established here in 1718. These settlers were followed by families from the Spain's Canary Islands in 1731 and colonists from the United States and Europe beginning in the early 1800s. The influx of new arrivals continued when Texas became an independent Republic in 1836 and a state in 1845. By the late 1800s, Native Americans, Mexicans, Germans, French, Poles, Lebanese, Italians, and African Americans lived and worked side by side along the creek. The neighborhood was largely demolished for expressway construction in the middle 1900s.

Desde los primeros encuentros entre personas de diferentes naciones, Bexar se convirtió en una comunidad mestiza, un lugar donde nuestra humanidad se transformó.

El Arroyo San Pedro, creado de manantiales que brotan de un profundo acuífero subterráneo, sostuvo a los nativos por 12,000 años antes de que los españoles llegaran a establecer un asentamiento permanente aquí en 1718. Estos colonos fueron seguidos por familias de las islas Canarias españolas en 1731 y colonos de los Estados Unidos y Europa desde los principios del siglo 1800. Este influxo de nuevas llegadas continuó cuando Texas se convirtió en una república independiente en 1836 y en un estado en 1845. Para el fin del siglo 1800, los nativos americanos, mexicanos, alemanes, franceses, polacos, libaneses, italianos y africanos vivieron y trabajaron lado a lado a lo largo del arroyo. El vecindario fue demolido en gran parte para la construcción de una autopista a mediados del siglo 1900.

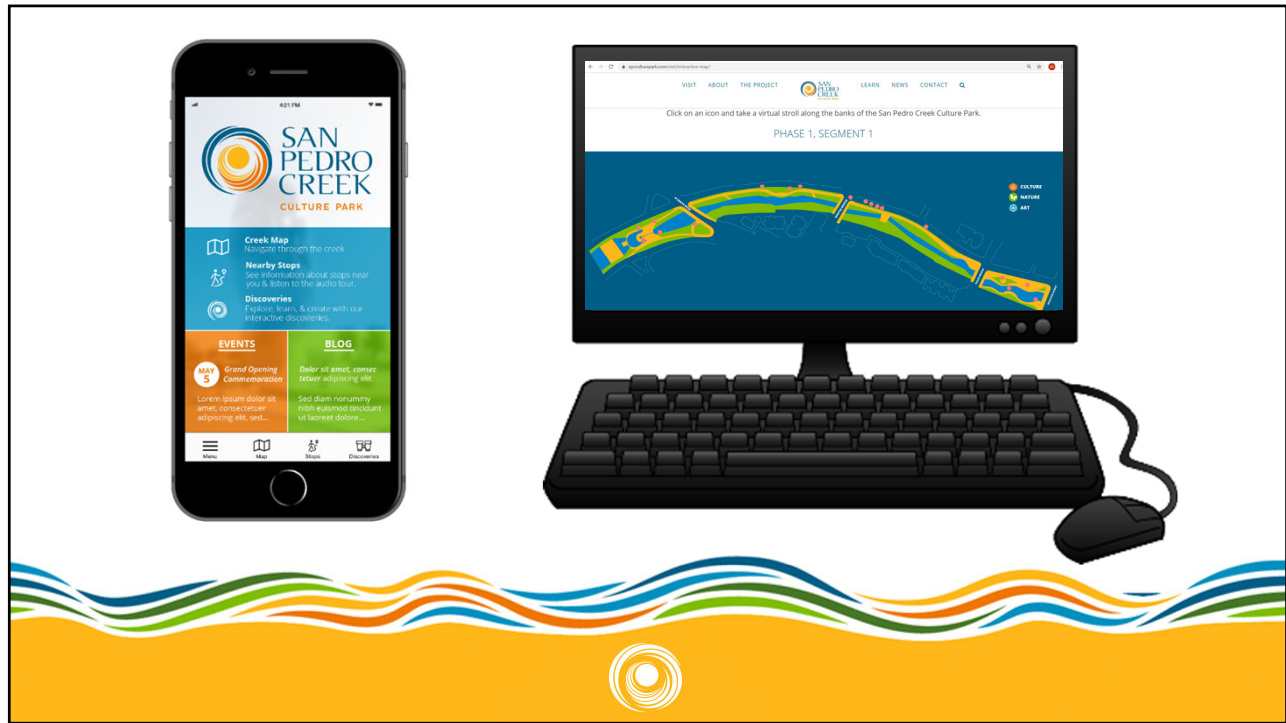


Italian House in San Antonio, Texas (San Antonio, Texas)

Italian House in San Antonio, Texas (San Antonio, Texas)

40





41



42

## Calendar Items



**June 15, 22**  
Yoga on SPCCP



**June 15**  
Five Panel Mural Virtual Office  
Hours



**June 18**  
Five Panel Mural Virtual Office  
Hours



**July 9**  
SPCCP Subcommittee Virtual  
Meeting



43

## Comments from the Public



44