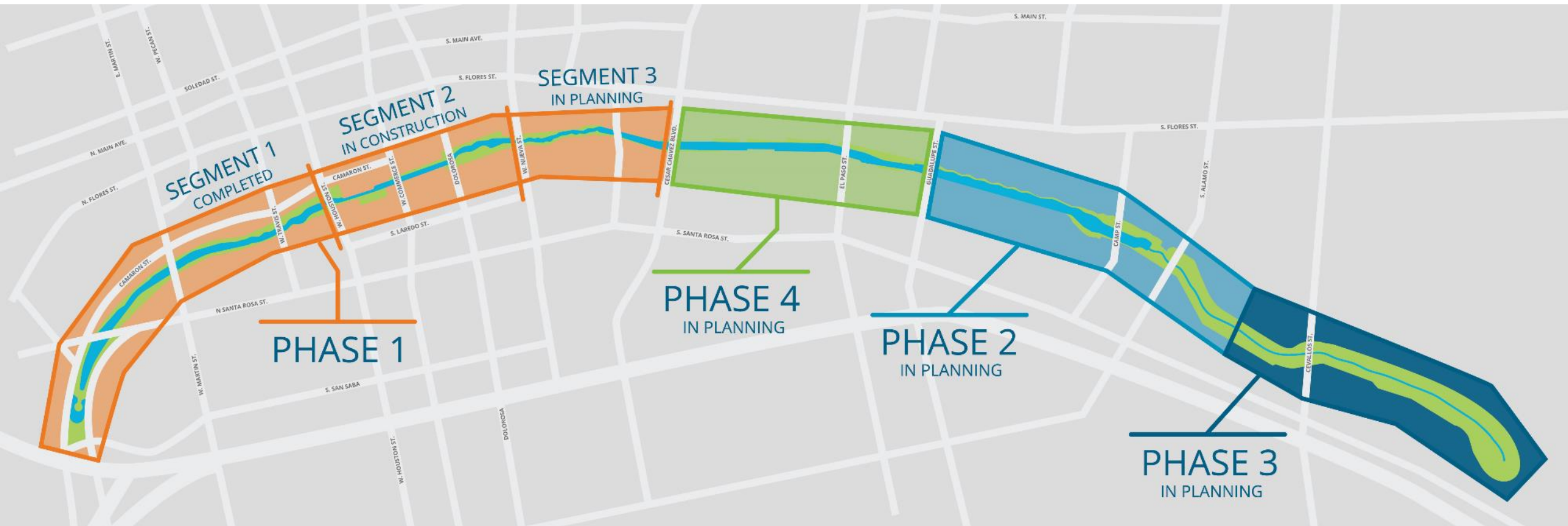




SAN
PEDRO
CREEK
CULTURE PARK

January 9, 2020





Updates

- Phase 1.2
 - Construction activities
- Phases 1.3 and 2
 - Design Activities
- Partner Coordination



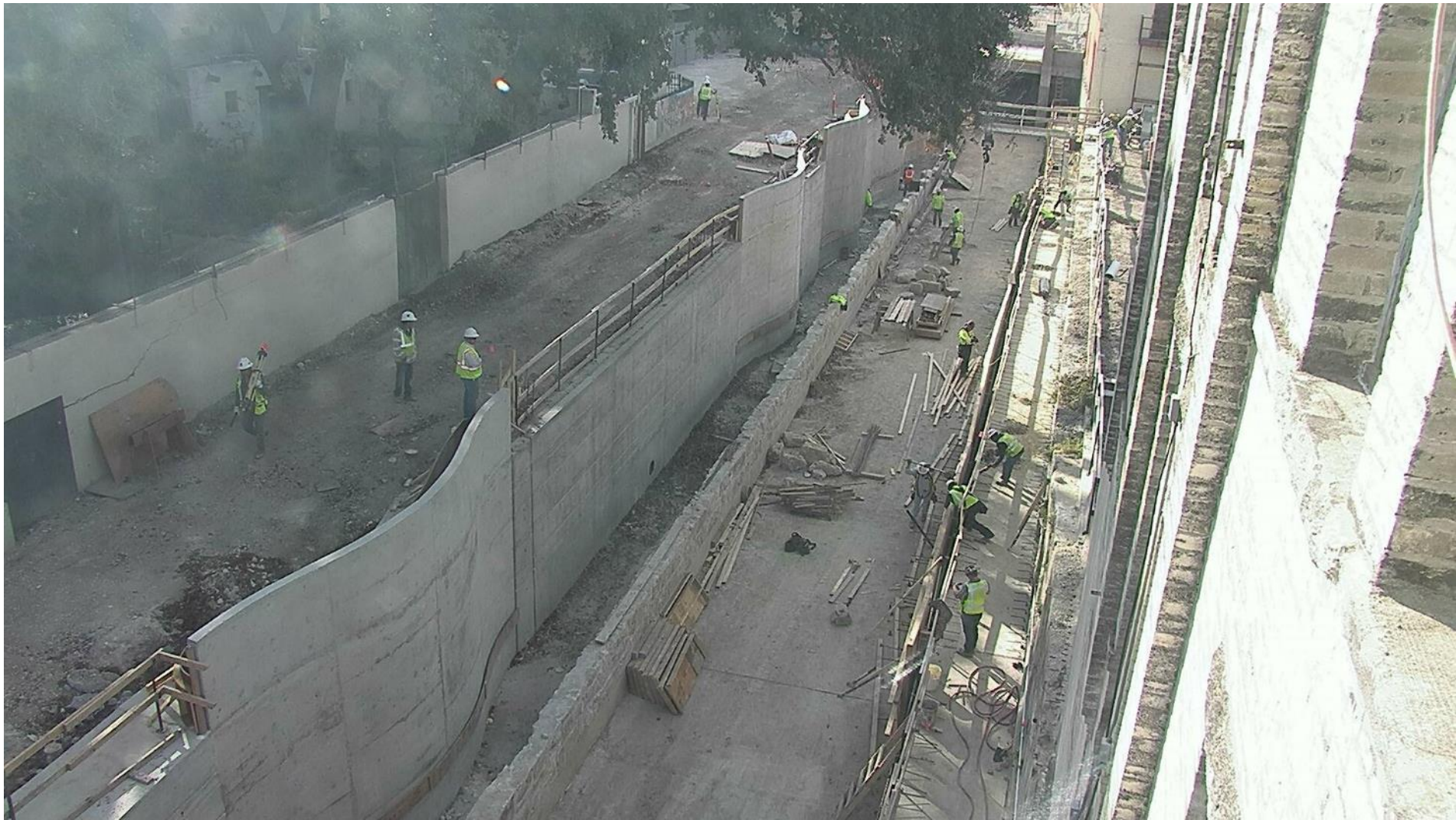
Phase 1.2 Construction

- Houston to Commerce
 - Houston bridge replacement
 - Utility Installation
 - Alameda Gardens
- Commerce to Dolorosa
 - Dolorosa bridge replacement
 - Channel wall forming
- Dolorosa to Nueva
 - Channel wall construction
 - Excavation



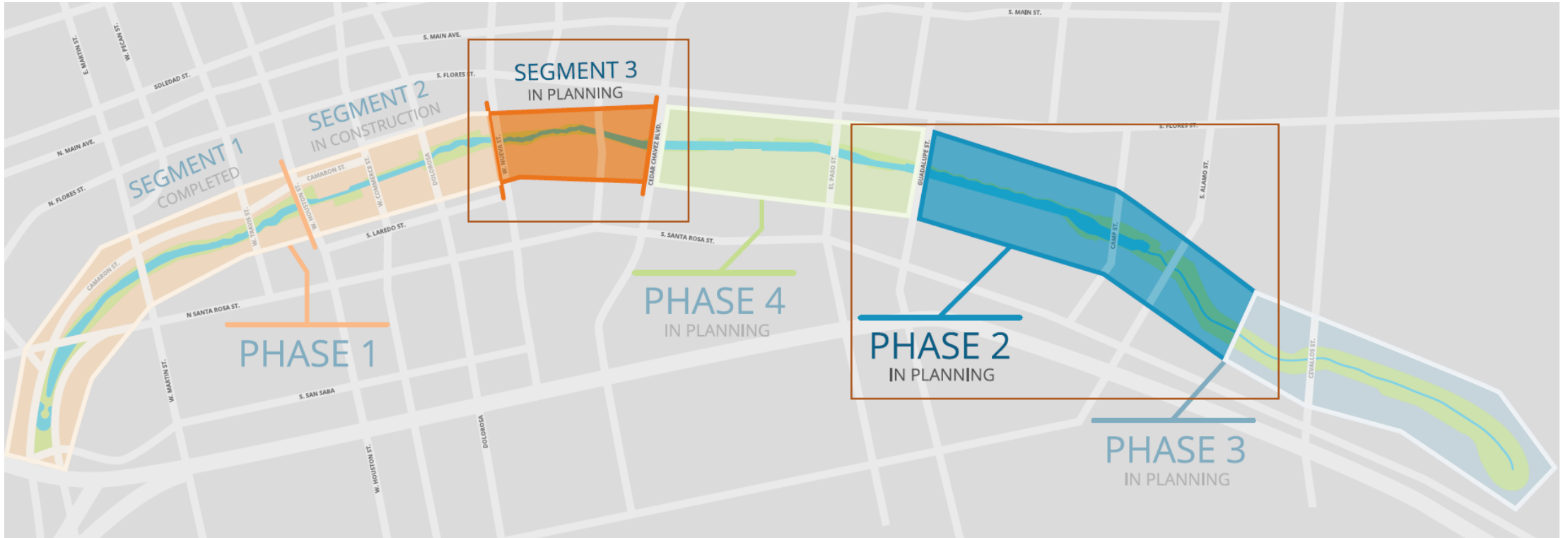








Phase 1.3 and Phase 2 Design



Phase 1.3 and Phase 2 Design

- December 20: Early work packages received
 - Heavy civil & demolition
 - 60% review set received for remainder of design
- March 2020: Construction start
- July 2020: 100% completion full design
- September 2020: Guaranteed Maximum Price from CMAR







Partner Coordination

- Phases 1 and 2 Coordination ongoing
 - SAISD Administration building
 - UTSA downtown campus
 - TPR/Alameda
 - Commerce Street
 - GSA/Federal Courthouse
 - TxDOT
 - Linda Pace Foundation/Ruby City
 - CPS Substation
 - Camaron Street

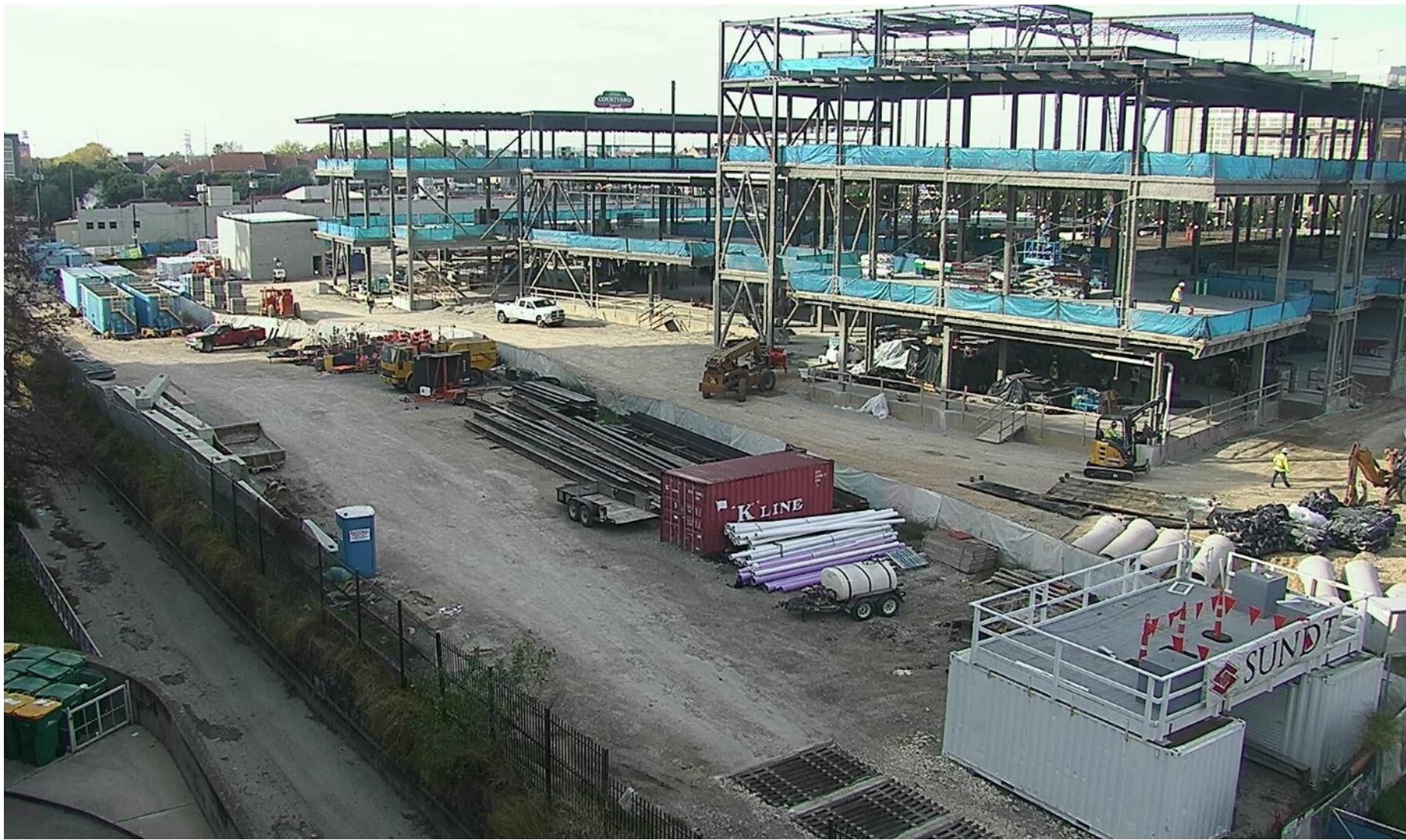


Partner Coordination

- Executive Committee
 - David Smith, County Manager, Bexar County
 - Lori Houston, Assistant City Manager, City of San Antonio
 - Razi Hosseini, Interim Director, Transportation and Capital Improvements, City of San Antonio
 - Suzanne Scott, General Manager, San Antonio River Authority
- Meeting held on December 13, 2019







QUESTIONS & COMMENTS

